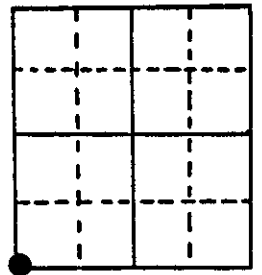


U.S. PUBLIC LAND SURVEY MONUMENT RECORD

Note: This form is intended and designed to fulfill all requirements of Wisconsin Administrative Code, Chapter A-E 5.02, U.S. Public Land Survey Monument Record (3) (a) (b) (c) (d) (e) (f) (g) (h) (i). An additional sheet may be added if necessary to conform with said requirements.

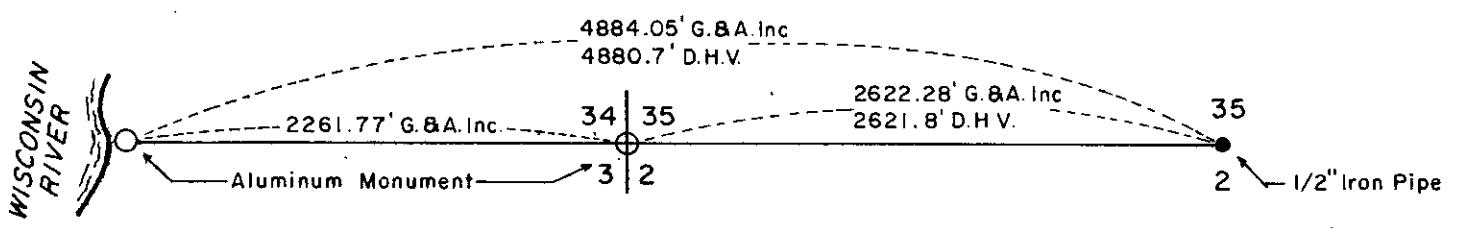
(a) Corner location: Township 36 North
 Range 8 East ~~West~~
 Town/City/Village Town of Crescent
 County Oneida



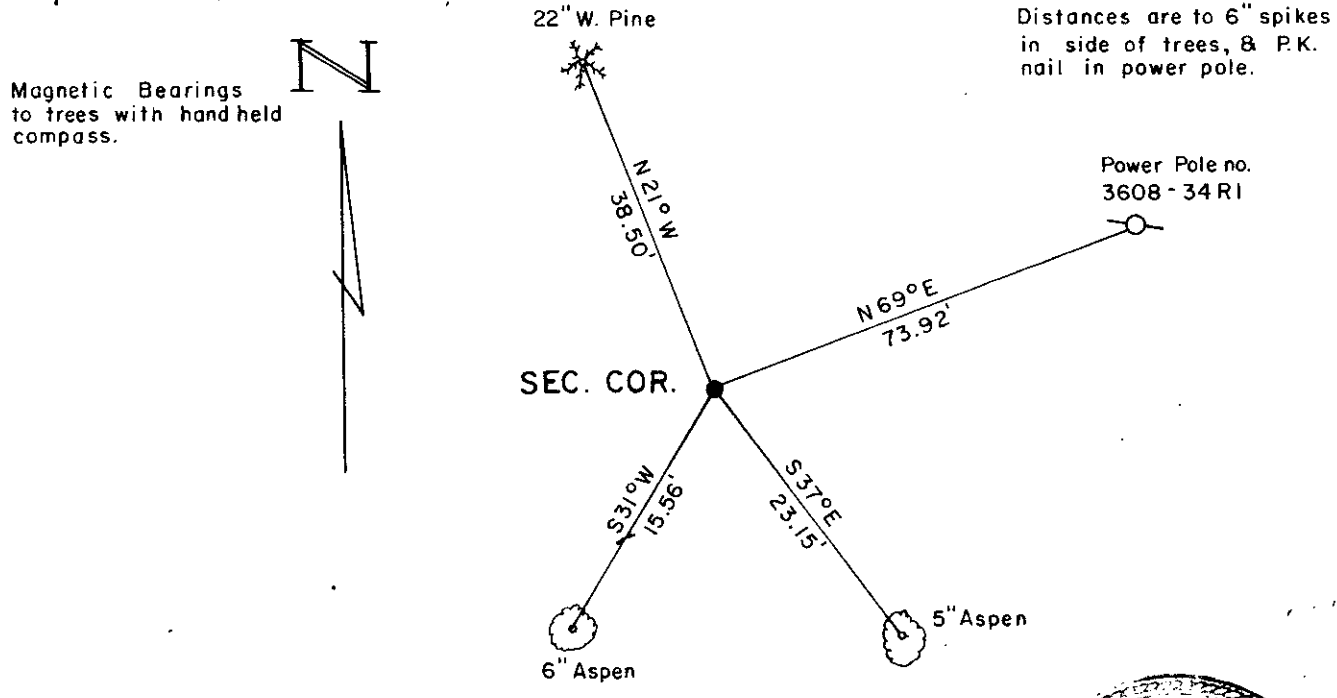
Section 35

(b) (f) (g) (h) Description of monument found at this corner and if it was accepted, state all evidence (material, testimonial, occupational, plats, records, other monuments) used as a basis for accepting. If not accepted or if nothing was found, state evidence used as basis for establishing location. If reestablished through lost corner proportionate methods, indicate all monuments, distances and directions used to establish.

No corner evident. D.H. Vaughan proportioned corner in June, 1898. Ran west to MC at Wisconsin River from the North $\frac{1}{4}$ corner of Section 2. His distance was 4880.7' and our distance is 4884.05'. Set aluminum monument at proportional distance of 2622.28' west of the South $\frac{1}{4}$ corner of Section 35.

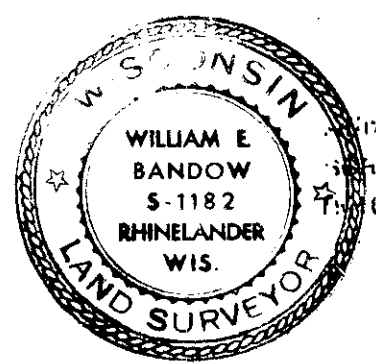


(c) (d) (e) Plan view of corner with ties to at least 4 witness monuments. If in disagreement with previously established corner, show the distances between the two corners and also indicate the ties to the disputed corner.



(i) I, William E. Badow
 (type or print name) certify that the corner location on this record was determined by me or under my direction and control and that this U.S. Public Land Survey Monument Record is correct and complete to the best of my knowledge and belief.

William E. Badow 12-5-84
 Signature Date



Index No. 7-17

3608340000