

This form is intended to fulfill the requirements of Chapter A-E 7.08 (3)(a) thru (i) U.S. Public Land Survey Monument Location Record, Wisconsin Administrative Code. Use the reverse side of form for continuation.

U.S. PUBLIC LAND SURVEY MONUMENT LOCATION

Recorders Data

USPLS CORNER: SOUTH 1/4 SECTION: 36 TOWNSHIP: 36 NORTH RANGE: 08 EAST

NAME OF WATERWAY FOR M.C. CORNER : N/A SECTION LINE: N/A

~~(CITY)(VILLAGE)(TOWN)~~ OF: CRESCENT COUNTY OF: ONEIDA

Description of monument found or placed and all other evidence used as the basis for monument location; including monuments and related measurements required if the corner location was reestablished by lost corner proportionate methods. Also indicate name of original surveyor, original survey date and the corner monument, bearing trees, witness or other reference monuments established; including measured bearing and distance ties, from available records.

Found and accepted an old 2" dia. galvanized iron pipe monument with uncapped top and bent below grade at about 45° NE, so I very carefully excavated to reveal the base of the iron pipe and evidence of original plumb soil socket and reset such location with a standard 2" dia. by 30" long aluminum pipe monument with stamped Oneida County cap 6" above grade; I left the old 35" long iron pipe flat on grade next to the new monument set. The monument was pointed out to me by local area resident Richard Newman, an employee of the adjoining landowner. The corner falls on an old East/West fenceline in a large open field area.

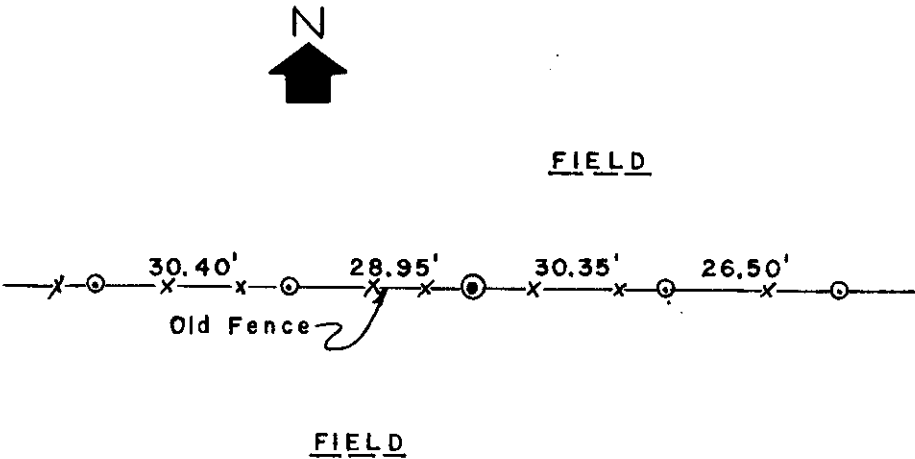
In September 1860, Alfred Millard/GLO set a wood post as the original corner and marked OBTs: A 12" Hemlock S49°W 16 links and a 12" Sugar Maple North 39 links; all of which are obliterated.

A records research revealed no reliable field notes, plats or maps supporting the location of this corner; however, its location by USGS quad map and current aerial photography analysis compares with existing terrain evidence.

Upon the basis of a phone query to Norman J. Loftus/RLS 259, he had also previously found and used the iron pipe at this corner for purposes of running the center quarter line North and also by his son Todd Loftus/RLS 1523 later on; so contrary to any other evidence proving this location otherwise, it is accepted therefore by common report.

This recovery completed June 30, 2000; there were no direct witnesses at the time of corner referencing work.

Plan view map of monument location with bearing and distance ties to a minimum of four(4) described witness or reference monuments of concrete, natural stone, iron, live bearing trees or equivalent material. If applicable, also show a minimum of two(2) bearing and distance ties to any other monument found and not accepted; including the bearing and distance from the accepted monument.



WITNESS MONUMENT TIES:

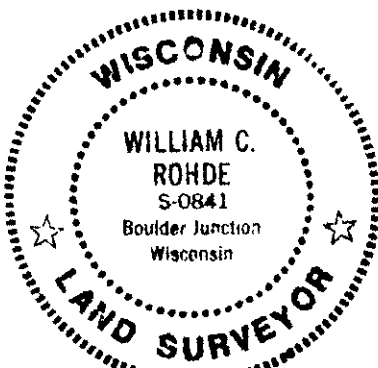
Note:

This corner location is referenced by 3/4" dia. by 24" long iron pipe witness monuments, with a flush yellow poly Reference Mark cap in top, on a right transit line thru monument center at 28.95' and 59.35' West of the corner and at 30.35' and 56.85' East of the corner, with each iron pipe further marked by a wire stake flag and a red/orange tapered poly stake driven nearby. This was necessary as no suitable bearing trees existed within a convenient distance from the corner for reference purposes. A standard white poly 'T' marker post was set 6" South of the corner monument.

SCALE: 1" = 30'

Unless otherwise indicated, all bearing tree ties are to a .25" dia. by 2.5" long PK nail with a 1.25" dia. steel washer driven into unblazed right face and a .25" dia. by 2.5" long PK nail with a 2" dia. steel washer stamped BT is also driven into unblazed face of bearing tree at DBH; the basis for measured bearings is by compass to nearest degree and all tie distances are measured horizontal by steel tape corrected to nearest 1/100th feet at standard temperature of 68° F.

RLS SEAL:

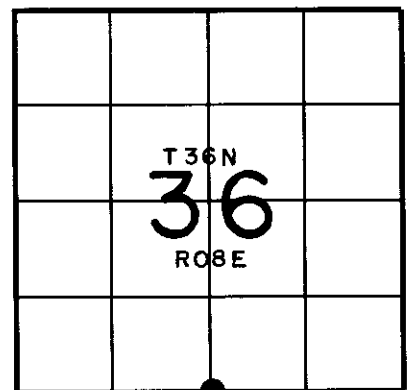


LAND SURVEYOR CERTIFICATE:

I, William C. Rohde, hereby certify that I am duly licensed as a Professional Land Surveyor in the State of Wisconsin; that this USPLS monument location was determined by me and/or under my direct supervision and control; and that this U.S. Public Land Survey Monument Location Record is true and correct to the best of my knowledge and belief.

Signed: *William C. Rohde*
William C. Rohde RLS 841

Date Signed: January 31, 2001



SECTION LOCATION MAP

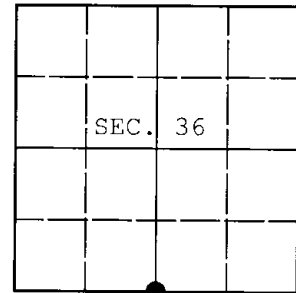
INDEX NO. 3608360020

223

U.S. PUBLIC LAND SURVEY MONUMENT RECORD

Note: This form is intended and designed to fulfill all requirements of Wisconsin Administrative Code, Chapter A-E 7.08 U.S. Public Land Survey Monument Record (3) (a) (b) (c) (d) (e) (f) (g) (h) (i). An additional sheet may be added if necessary to conform with said requirements.

(a) CORNER LOCATION: WISCRS - Oneida County
1/4 Cor. of Secs. 1 & 36 N: 134,675.65 USft
Township 35 & 36 North E: 257,162.34 USft
Range 8 East of the 4th P.M. Datum: NAD 1983(2011)
Town of Crescent County of Oneida



(b) HISTORY OF ORIGINAL CORNER ESTABLISHMENT

Original Surveyor: Original Accessories:
Date of Survey: Commenced:
Completed:

(b) (f) (g) (h) Description of monument found at this corner and if it was accepted, state all evidence (material, testimonial, occupational, plats, records, other monuments) used as a basis for accepting. If not accepted or if nothing was found, state evidence used as basis for establishing location. If re-established through lost corner proportionate methods, indicate all monuments, distances and directions used to establish. Indicate type of monument and sign post found or set.

NOTE: This is a perpetuation of a previous USPLS Monument Record by William C. Rohde, RLS dated January 31, 2001 and filed in the office of the Oneida County Register of Deeds. A complete history of the corner can be found on the previous monument record. I accept the previous location as a true and faithful perpetuation or reestablishment of the original corner location and further perpetuate it as follows.

June 14, 2016: I found and accepted the record monument, a 2.5" diam. aluminum pipe with 3.25" diam. Oneida Co. aluminum cap projecting 12" above the ground surface. The existing accessories were found in substantial agreement with the record and were not remeasured as the sole purpose of this work is to report the coordinates of the corner point.

The coordinates shown were derived from two independent RTN observations of the corner point and are referenced to the WISCORS GNSS Network.

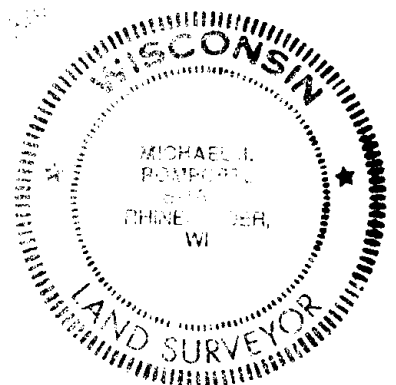
(c) (d) (e) Plan view of corner with ties to at least 4 witness monuments. If in disagreement with previously established corner, show the distances between the two corners and also indicate the ties to the disputed.

REGISTER OF DEEDS OFFICE
ONEIDA COUNTY
FILED

DEC 28 2016

AT O'CLOCK M
KYLE J. FRANSON
REGISTER OF DEEDS

(i) I, Michael J. Romportl, Professional Land Surveyor No. S-1624, hereby certify that the corner location on this record was determined by me or under my direction and control and that this U.S. Public Land Survey Monument Record is correct and complete to the best of my knowledge and belief.



Michael J. Romportl 12/23/2016
Signature Date