

Stock No. 26273

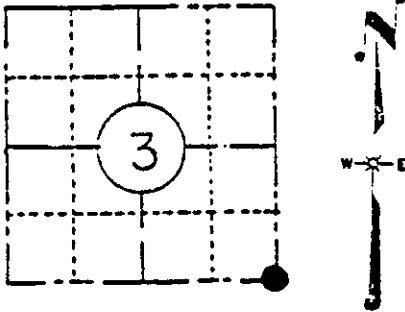
U. S. PUBLIC LAND SURVEY MONUMENT RECORD

INSTRUCTIONS:

This record shall show the location of the corner and shall include all of the following nine elements (a through i).

- (a) Identify the corner by reference to the U.S. public land survey system.

The Southeast corner of Section 3, Township 36 North, Range 9 East, Town of Pelican, Oneida County, Wisconsin.



LOCATION SKETCH
(Location of landmark indicated by "⊙")

Original Notes:

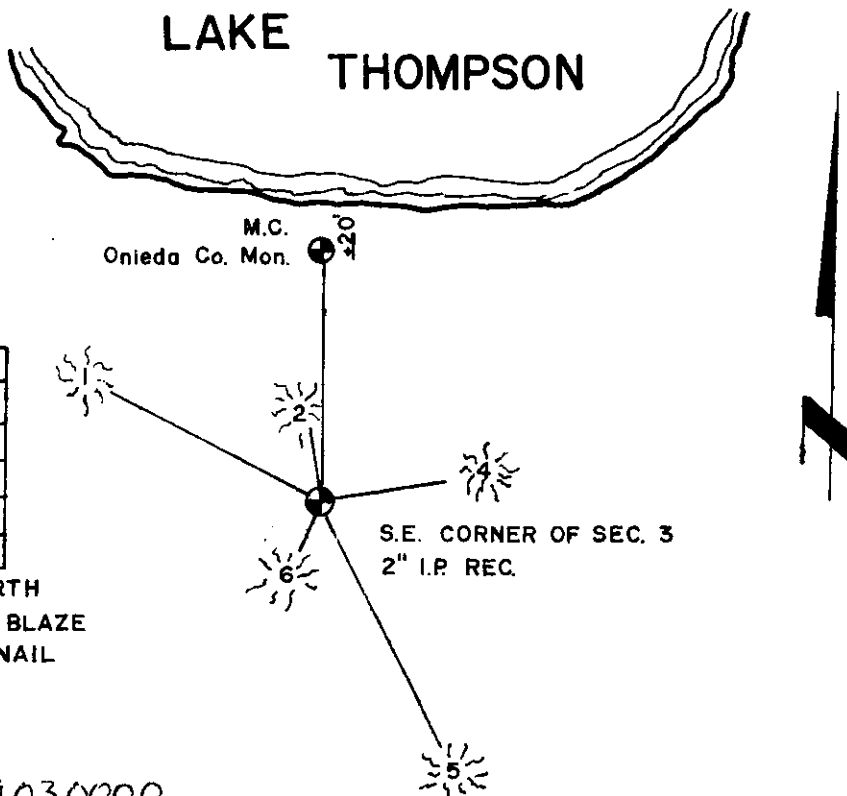
The corner was set by Wm E. Daugherty. The survey was started July 30, 1863 and finished Aug. 11, 1863. North between sections 10 & 11 $V 8^{\circ}30'$ E 80.00 chains set post common to Sections 2,3,10 & 11. B.T.'s Tamarac $8'' N 24^{\circ} E 40$ links
Tamarac $6'' S 20^{\circ} E 20$ links

- (b) Describe any record evidence, monument evidence, occupational evidence, testimonial evidence or any other material evidence you considered, and whether the monument was found or placed.

I recovered a 2" iron pipe, two bearing trees in place, and a 4"x4" sq. scribed post in place next to the pipe. In a resurvey of Section 3 on Jan. 30, 1899 D.H. Vaughan (county surveyor) says in his notes he found a 2" iron pipe set by Maine and the original bearing trees. The section was again resurveyed on Nov. 4, 1959 by F.R. Winckensten. He also found the 2" iron pipe and the bearing trees in place.

- (c) In the plan view drawing below, provide reference ties to at least 4 witness monuments, or, if the location is within a municipality, to at least 2 witness monuments. (Witness monuments shall be made of concrete, natural stone, iron or other equally durable material, except wood.) Describe witness monuments.

- (d) Show a plan view drawing depicting the relevant monuments and reference ties which is sufficient in detail to enable accurate relocation of the corner monument if the corner monument is disturbed. Indicate north.



No.	BEARING	DIST.	MON.
1	N 65° 50' W	34.60'	9" Balsam
2	N 05° 36' W	8.18'	9" Tam.
3	N 01° 45' E	60.20'	O.C.M.
4	N 79° 55' E	12.85'	6" Balsam
5	S 27° 41' E	34.17'	5" Tam.
6	S 23° 23' W	5.56'	7" Balsam

ALL BEARINGS REFERENCED TO MAGNETIC NORTH
ALL TREES BLAZED AND P.K. NAILS SET IN BLAZE
ALL DISTANCES ARE TO THE HEAD OF THE NAIL

(e) Describe any material discrepancy between the location of the corner as restored or reestablished and the location of that corner as previously restored or reestablished by distance and direction. Show the discrepancy on the plan view drawing under (c), above. Show the distances between the corner as previously restored or reestablished and (1) the corner as restored or reestablished, and (2) to at least 2 of the witness monuments shown on the drawing in (d), above. None.

(f) Was the corner restored through acceptance of (1) an obliterated evidence location, or, (2) a found perpetuated location? A found perpetuated location.

(g&h) Was the corner reestablished through lost corner proportionate methods? ^{No} If so, show the method, including the directions and distances to other public land survey corners used as evidence or used for proportioning in determining the corner location?

REGISTER OF DEEDS OFFICE
ONEIDA COUNTY, WIS.
FILED
JUL 11 1986
At 8:00 O'Clock A.M.
DORIS VERAGE KUEHN
REGISTER OF DEEDS

(i) I, John S. Zierden
(type or print name) certify that the corner location shown on this record was determined by me or under my direction and control and that this U.S. Public Land Survey Monument Record is correct and complete to the best of my knowledge and belief.

John S. Zierden 2/29/84
Signature Date

