

U.S. PUBLIC LAND SURVEY MONUMENT RECORD

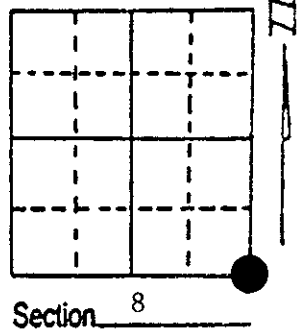
Note: This form is intended and designed to fulfill all requirements of Wisconsin Administrative Code, Chapter A-E 7.08 U.S. Public Land Survey Monument Record (3) (a) (b) (c) (d) (e) (f) (g) (h) (i). An additional sheet may be added if necessary to conform with said requirements.

(a) Corner location: Township 36 North

Range 9 East/West

Town/City/Village Pelican

County Oneida



(b) (f) (g) (h) Description of monument found at this corner and if it was accepted, state all evidence (material, testimonial, occupational, plats, records, other monuments) used as a basis for accepting. If not accepted or if nothing was found, state evidence used as basis for establishing location. If reestablished through lost corner proportionate methods, indicate all monuments, distances and directions used to establish. Indicate type of monument found or set and sign post.

1863 - Corner was originally set by Wm. E. Dougherty. He tied the following bearing trees: 10" Hemlock, S50°W, 36 lks; 10" Birch, N72°E, 22 lks.

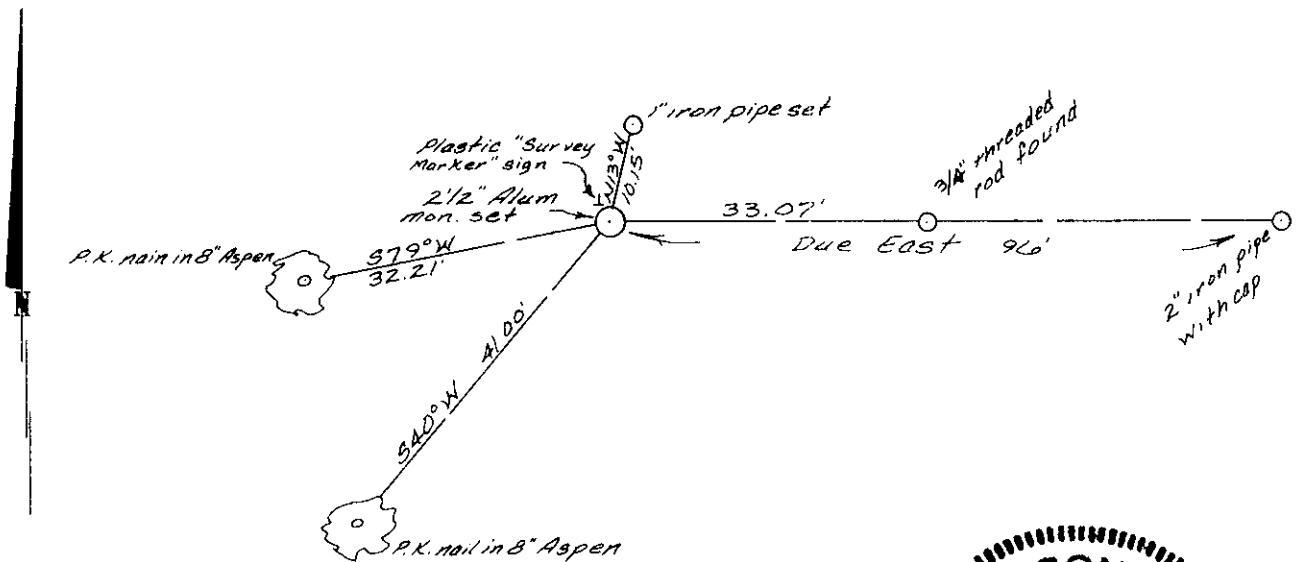
1948 - F. R. Wincentzen used an iron pipe "west of town road" as the correct section corner to survey the SE-SE. He also set an iron pipe at the SW cor. of the SE-SE 1352.0' westerly of said sec. corner.

1973 - Inman Engineering found and accepted Wincentzen's cor. (3" iron pipe)

1977 - Wis. Dept. of Trans. set a DOT cast alum. mon. 33' east of Wincentzen's iron pipe.

1989 - I tied the SW cor. of the SE-SE, a 1" iron pipe, and the distance to the 3" iron pipe was found to be 1351.61' as compared to FRW's 1352.0' in 1948. I accepted the 3" iron pipe as the correct location for the section corner. I replaced said 3" iron pipe with a 2 1/2" x 30" alum. mon. with cap.

(c) (d) (e) Plan view of corner with ties to at least 4 witness monuments. If in disagreement with previously established corner, show the distances between the two corners and also indicate the ties to the disputed corner.

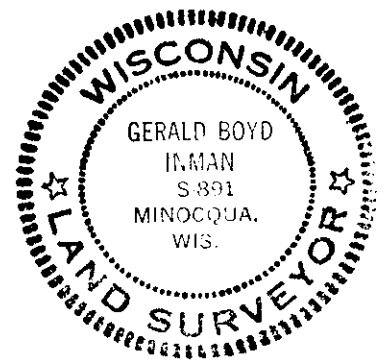


(i) I, Gerald B. Inman
 (type or print name) certify that the corner location on this record was determined by me or under my direction and control and that this U.S. Public Land Survey Monument Record is correct and complete to the best of my knowledge and belief.

Signature

October 26, 1989

Date



Index No. 5-9

3609080000