

U. S. PUBLIC LAND SURVEY MONUMENT RECORD

I N S T R U C T I O N S : This record shall show the location of the corner and shall include all of the following nine elements (a through i).

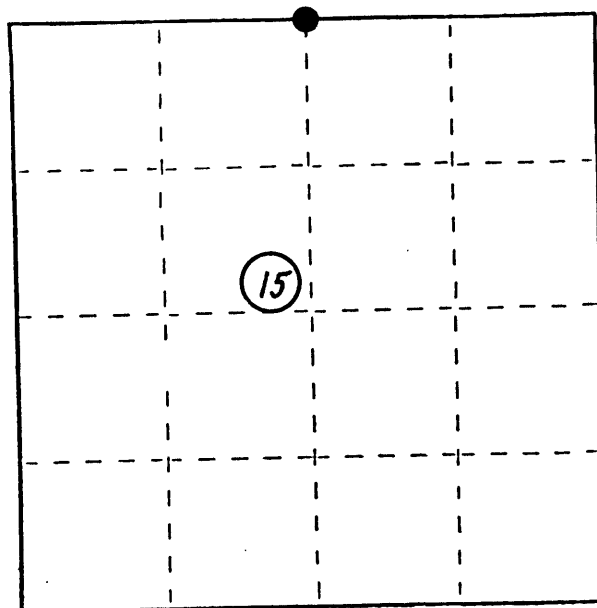
- (a) Identify the corner by reference to the U.S. public land survey system.

○ = Corner monument restored.

The Quarter corner between Sections 10 & 15, Township 36 North, Range 9 East, Oneida County, Wisconsin.

Compared with all record data and accepted as correct.

Robert H. Winat
 Robert H. Winat, Oneida Co. Surveyor
 4 May 1983



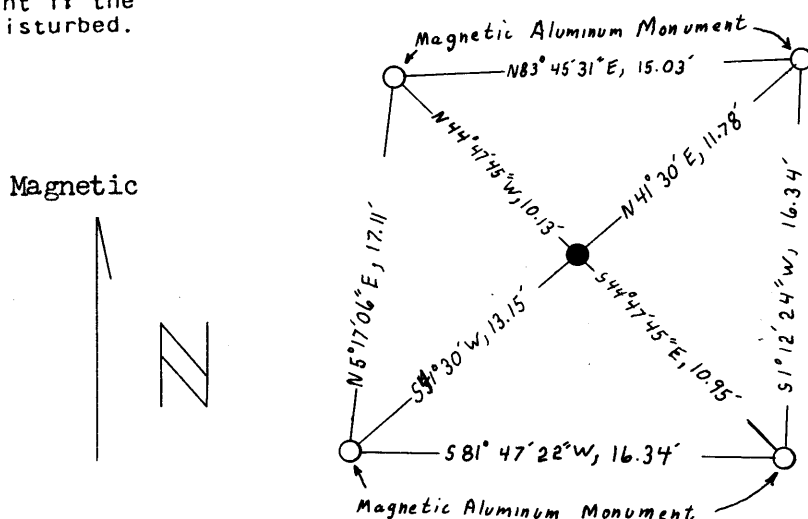
- (b) Describe any record evidence, monument evidence, occupational evidence, testimonial evidence or any other material evidence you considered, and whether the monument was found or placed.

D.H. Vaughan's survey of 1902 and 1908 proportioned this corner. Perpetuated by J. Donohue Engr. survey of June 1923 - found a 4" dia. cast iron cap, marked J. Donohue Engr. Co. with a cross in the center, in a 6" dia. concrete monument. An old barbed wire fence runs east.

C.S.M.# 184

- (c) In the plan view drawing below, provide reference ties to at least 4 witness monuments, or, if the location is within a municipality, to at least 2 witness monuments. (Witness monuments shall be made of concrete, natural stone, iron or other equally durable material, except wood.) Describe witness monuments.

- (d) Show a plan view drawing depicting the relevant monuments and reference ties which is sufficient in detail to enable accurate relocation of the corner monument if the corner monument is disturbed. Indicate north.



J-15

Describe any material discrepancy between the location of the corner as restored or reestablished and the location of that corner as previously restored or reestablished by distance and direction. Show the discrepancy on the plan view drawing under (d), above. Show the distances between the corner as previously restored or reestablished and (1) the corner as restored or reestablished, and (2) to at least 2 of the witness monuments shown on the drawing in (d), above.

NA

(f) Was the corner restored through acceptance of (1) an obliterated evidence location, or, (2) a found perpetuated location?

Found perpetuated monument accepted.

(g&h) Was the corner reestablished through lost corner proportionate methods? If so, show the method, including the directions and distances to other public land survey corners used as evidence or used for proportioning in determining the corner location?

NA

REGISTER'S OFFICE }
Oneida County, Wis. }

Received for Record the 28 day of
July A. D. 1983 at
2:10 o'clock P. M. and recorded in
Vol. _____ on page _____

Doris Verage Kuehn
Register

By Cynthia A. Pitts, Deputy



(i) I, Robert H. Winat, S-1040
(type or print name) certify that the corner location shown on this record was determined by me or under my direction and control and that this U.S. Public Land Survey Monument Record is correct and complete to the best of my knowledge and belief.

Robert H. Winat 29 April 1983
Signature Date

U. S. PUBLIC LAND SURVEY MONUMENT RECORD

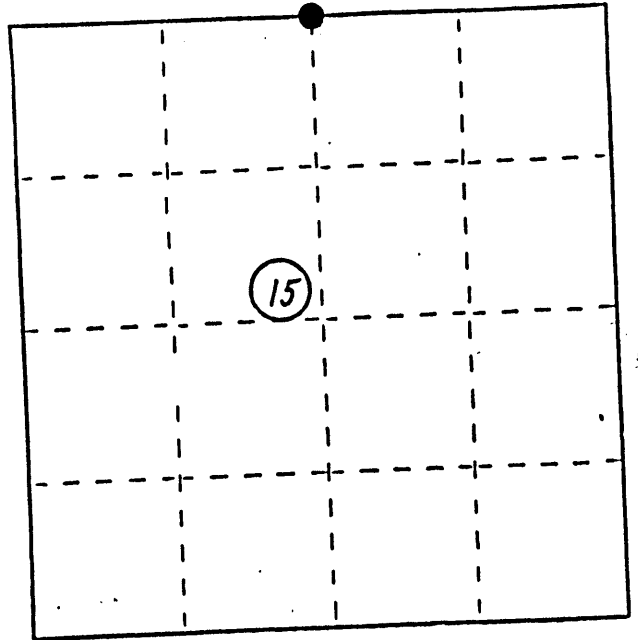
INSTRUCTIONS: This record shall show the location of the corner and shall include all of the following nine elements (a through i).

- (a) Identify the corner by reference to the U.S. public land survey system.
 ● = Corner monument restored.

The Quarter corner between Sections 10 & 15, Township 36 North, Range 9 East, Oneida County, Wisconsin.

Compared with all record data and accepted as correct.

Robert H. Winat
 Robert H. Winat, Oneida Co. Surveyor
 4 May 1983



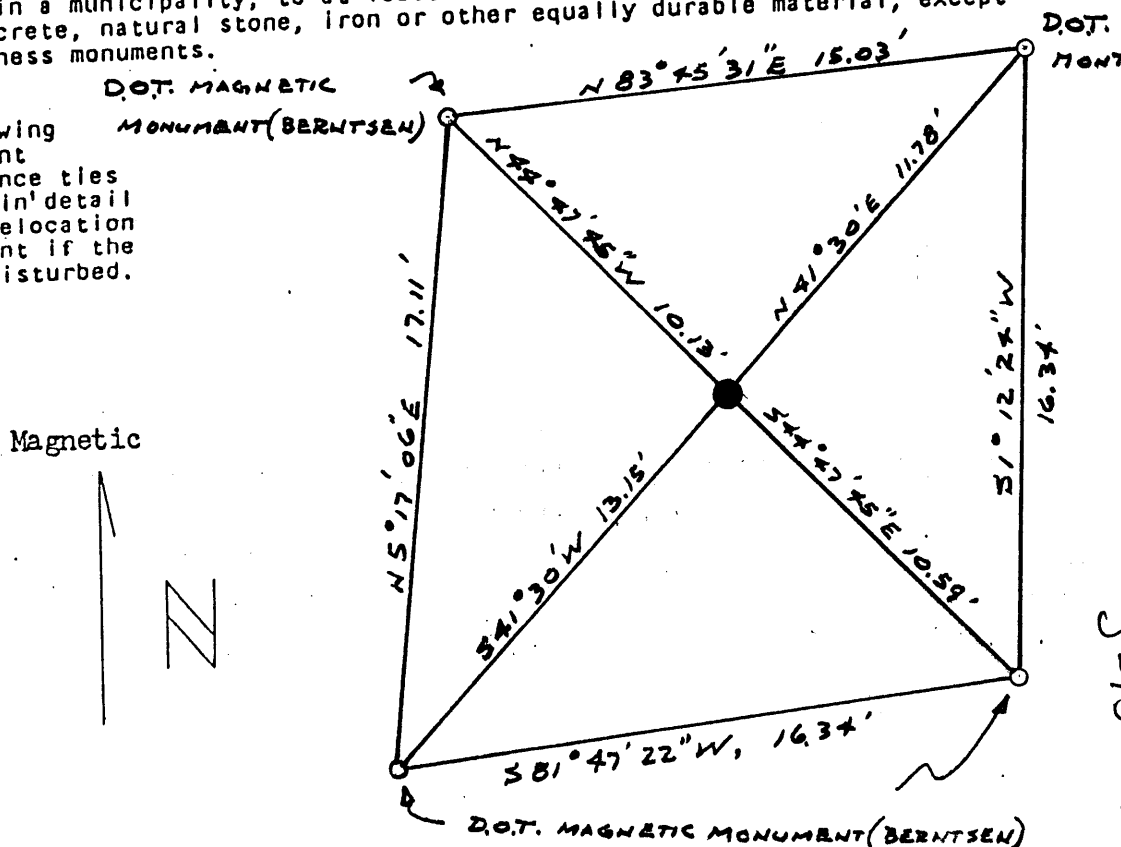
- (b) Describe any record evidence, monument evidence, occupational evidence, testimonial evidence or any other material evidence you considered, and whether the monument was found or placed.

D.H. Vaughan's survey of 1902 and 1908 proportioned this corner. Perpetuated by J. Donohue Engr. survey of June 1923 - found a 4" dia. cast iron cap, marked J. Donohue Engr. Co. with a cross in the center, in a 6" dia. concrete monument. An old barbed wire fence runs east.

C.S.M.# 184

- (c) In the plan view drawing below, provide reference ties to at least 4 witness monuments, or, if the location is within a municipality, to at least 2 witness monuments. (Witness monuments shall be made of concrete, natural stone, iron or other equally durable material, except wood.) Describe witness monuments.

- (d) Show a plan view drawing depicting the relevant monuments and reference ties which is sufficient in detail to enable accurate relocation of the corner monument if the corner monument is disturbed. Indicate north.



(e) Describe any material discrepancy between the location of the corner as restored or reestablished and the location of that corner as previously restored or reestablished by distance and direction. Show the discrepancy on the plan view drawing under (d), above. Show the distances between the corner as previously restored or reestablished and (1) the corner as restored or reestablished, and (2) to at least 2 of the witness monuments shown on the drawing in (d), above.

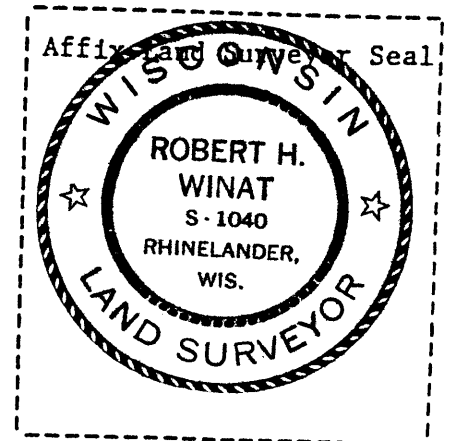
NA

(f) Was the corner restored through acceptance of (1) an obliterated evidence location, or, (2) a found perpetuated location?

Found perpetuated monument accepted.

(g&h) Was the corner reestablished through lost corner proportionate methods? If so, show the method, including the directions and distances to other public land survey corners used as evidence or used for proportioning in determining the corner location?

NA



(i) I, Robert H. Winat, S-1040
(type or print name) certify that the corner location shown on this record was determined by me or under my direction and control and that this U.S. Public Land Survey Monument Record is correct and complete to the best of my knowledge and belief, correcting the transposed digits for the witness to the SE, as shown in my previous corner record.

Robert H. Winat 18 Aug. 1983
Date

Signature

REGISTER'S OFFICE }
Oneida County, Wis. }

Received for Record the 18th day of
August A.D. 1983 at
4:00 o'clock P M. and recorded in
Vol. _____ on page _____
Donis Berge Kuehn
Register

Stock No. 26273