

CERTIFIED LAND CORNER RESTORATION

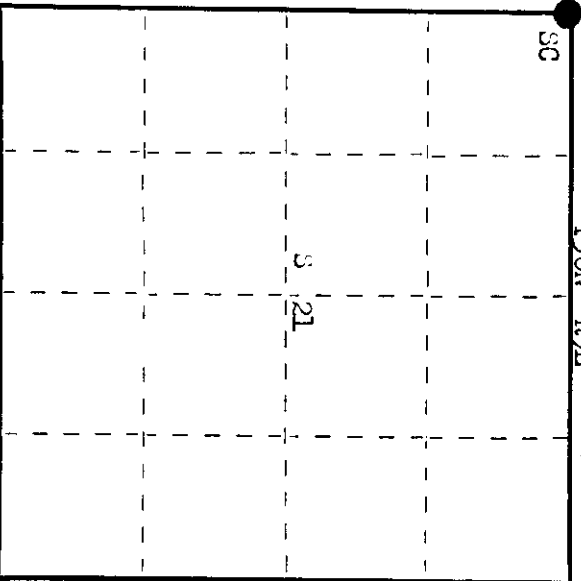
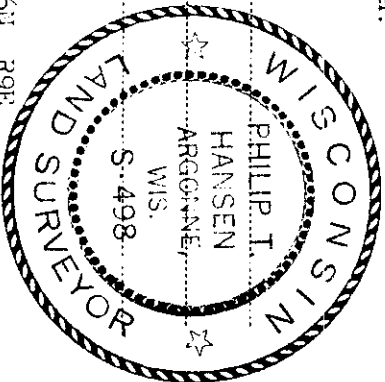
Index No. **N-9**

State of Wisconsin }  
 County of Oneida } ss.

I Phillip T. Hansen, do hereby certify that on the 12th day of April, 1976, I found evidence of the Section corner of Sec. 16, 17, 20, 21 Township 36 North, Range 9 East, Fourth Principal Meridian, as described hereon; and that from this evidence I established a new monument and accessories as described hereon to perpetuate the original location of this corner.

Resident witnesses:

Glen Barker  
 Jim Clafin  
 Herb Wagoner



○ = Corner monument restored.

History of original corner establishment: Original Corner established by Mr. E. Dougherty, Deputy Surveyor, in 1863 from which Maple 14" bears S 37° W 26 lks, Aspen 10" bears N 82° E 25 lks. Corner re-established by B.F. Dorr in 1898. Corner recovered and re-established by Ripco Surveyors, Goddard and Crew, in 1961. Set RR spike in road 2" below surface. Set iron pipe with brass cap 35 lks East of Corner. Marked NBTs - Maple 4" S 76° W 75 lks, Elm 5" N 64° E 61.5 lks.

Description of corner evidence found: recovered RR spike for corner, buried 2" below surface of black top. recovered 2" iron pipe with brass cap for witness corner 35 lks East. This witness corner was badly bent and leaning. recovered OBT - Maple 4" (6") S 76° W (S 78° W) 75 lks, scribbling grown over. Elm 5" N 64° E 61.5 lks, now a cut off stump, scribbling partly visible.

Description of monument and accessories I established to perpetuate the original location of this corner.

Left RR spike in road as recovered.  
 Set new witness corner, 2" iron pipe with brass cap staked, 90 lks West of true corner.  
 NBT - Sugar Maple 8" N 50° W 130.5 lks, scribed SC BT.  
 Distance measured to center of BT.  
 Corner sets in center of Gerard road.  
 witness corner and BTs painted blue.

Dated at Rhineland, Wis. this 20th day of July, 1976.

Signature: *Phillip T. Hansen* Title: Registered Land Surveyor Registration No. S-498  
 County Surveyor, Registered Land Surveyor, or other duly authorized official

Office of Register of Deeds, County of Oneida, I hereby certify that the within instrument was filed in this office for record on the 23rd day of July, 1976 at 1:00 o'clock P.M.

*Dorise Torrage Kuehn*  
 (Register of Deeds)

By: Deputy

3609170000

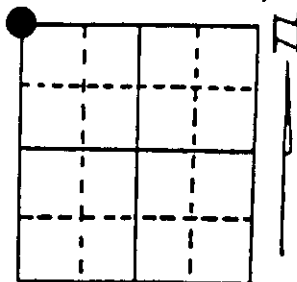
# U.S. PUBLIC LAND SURVEY MONUMENT RECORD

Note: This form is intended and designed to fulfill all requirements of Wisconsin Administrative Code, Chapter A-E 7.08 U.S. Public Land Survey Monument Record (3) (a) (b) (c) (d) (e) (f) (g) (h) (i). An additional sheet may be added if necessary to conform with said requirements.

(a) Corner location: Township 36 North  
Range 9 East/West

Town/City/Village PELICAN

County ONEIDA



Section 21

(b) (f) (g) (h) Description of monument found at this corner and if it was accepted, state all evidence (material, testimonial, occupational, plats, records, other monuments) used as a basis for accepting. If not accepted or if nothing was found, state evidence used as basis for establishing location. If reestablished through lost corner proportionate methods, indicate all monuments, distances and directions used to establish. Indicate type of monument found or set and sign post.

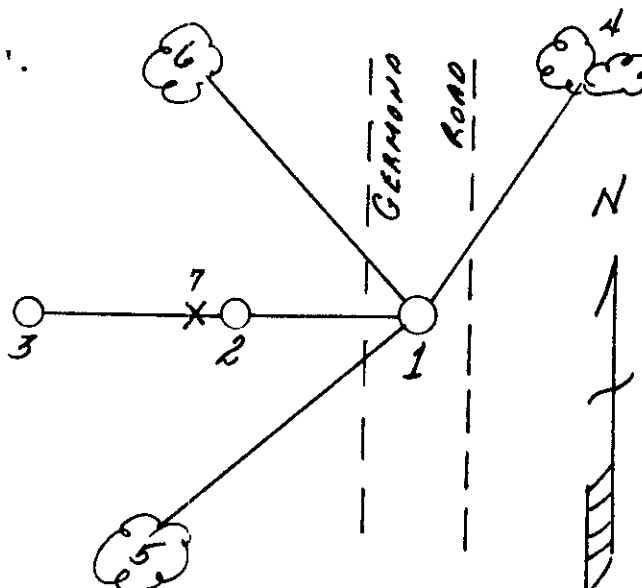
6/11/1993 - Found 5/8" re-rod in road surface and reference monument Westerly. We tied position off so that position would not be lost when road was resurfaced.

4/19/1994 - We placed a railroad spike for corner with a new reference monument, placed plastic sign post. Bearing trees are in good condition.

(c) (d) (e) Plan view of corner with ties to at least 4 witness monuments. If in disagreement with previously established corner, show the distances between the two corners and also indicate the ties to the disputed corner.

- 1) Railroad spike.
- 2) 2" x 24" high iron pipe/B.C., West, 59.39'.
- 3) 2" x 30" aluminum monument, West, 84.46'.
- 4) Twin 8" Hemlock, N30°E, 82.12'.
- 5) 8" Sugar Maple, S73°W, 45.28'.
- 6) 12" Sugar Maple, N50°W, 85.66'.
- 7) Plastic sign post, West, 59.8'.

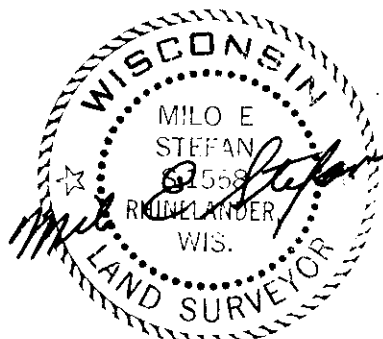
Distances to nail in side of BTs.  
Stump blazes scribed "BT".



(i) I, Milo E. Stefan  
(type or print name) certify that the corner location on this record was determined by me or under my direction and control and that this U.S. Public Land Survey Monument Record is correct and complete to the best of my knowledge and belief.

Milo E. Stefan  
Signature

May 9, 1994  
Date



Stamp

3609170000

Index No. N-9

JAN 25 2013

AT \_\_\_\_\_ O'CLOCK \_\_\_\_\_ M  
KYLE J. FRANSON  
REGISTER OF DEEDS

# U.S. PUBLIC LAND SURVEY MONUMENT RECORD

Note: This form is intended and designed to fulfill all requirements of the Wisconsin Administrative Code, Chapter A-E 7.08 U.S. Public Land Monument Record (3)(a)(b)(c)(d)(e)(f)(g)(h)(i). An additional sheet may be added if necessary to conform with said requirements.

(a) CORNER LOCATION: Oneida County Corner I.D. No.:

3609170000

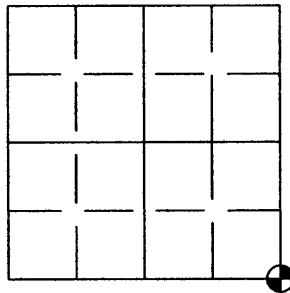
Southeast Corner, Sec. 17

Township 36 North

Range 9 East

Town of Pelican

County of Oneida



SECTION 17

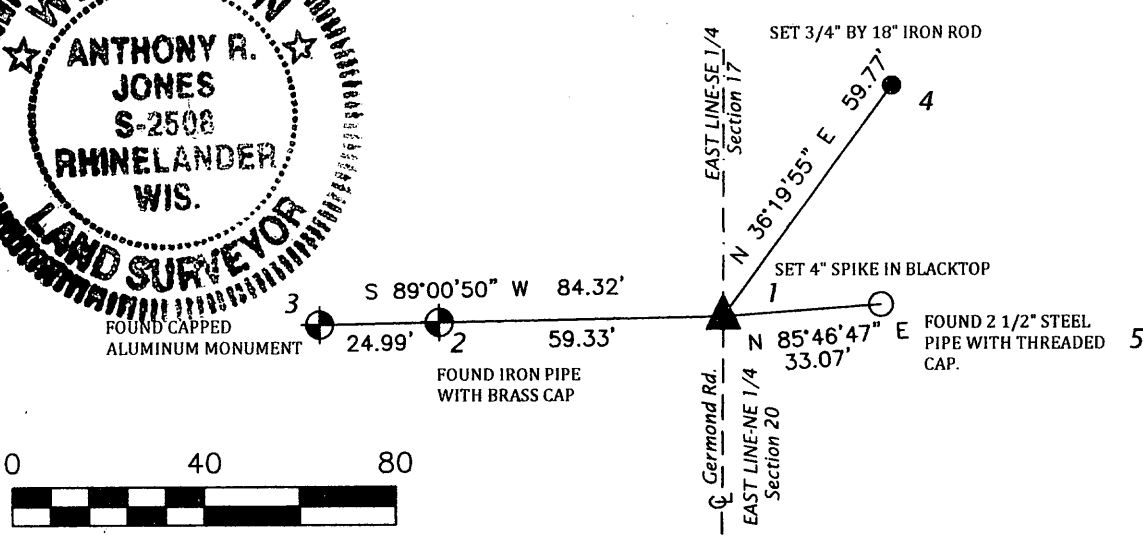
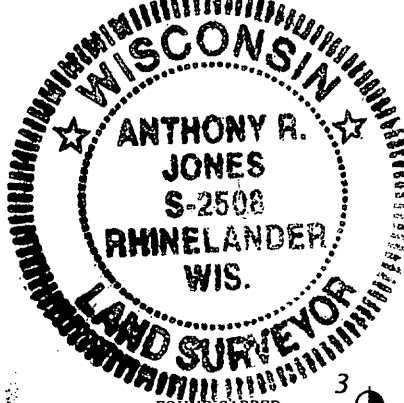
(f)(g)(h) DESCRIPTION OF MONUMENT FOUND AT THIS CORNER AND IF IT WAS ACCEPTED, STATE ALL EVIDENCE (MATERIAL, TESTIMONIAL, OCCUPATIONS, PLATS, RECORDS, OTHER MONUMENTS) USED AS A BASIS FOR ESTABLISHING LOCATION. IF NOT ACCEPTED OF IF NOTHING WAS FOUND, STATE EVIDENCE USED AS BASIS FOR ESTABLISHING LOCATION. IF REESTABLISHED THROUGH LOST CORNER PROPORTIONATE METHODS, INDICATE ALL MONUMENTS, DISTANCES AND DIRECTIONS USED TO ESTABLISH. INDICATE TYPE OF MONUMENT AND SIGN POST FOUND OR SET.

MAY 9, 1994 - U.S. PUBLIC LAND SURVEY MONUMENT RECORD BY MILO STEFAN CALLS MONUMENT AS SET RAILROAD SPIKE.

APRIL 2, 2012- PRE-CONSTRUCTION REPORT FILED BY ANTHONY JONES. FOUND SOUTH EAST CORNER, SEC. 17-36-09 AS DESCRIBED. FOUND 2 1/2" STEEL PIPE WITH THREADED CAP. CAP APPEARS TO HAVE BEEN STAMPED, BUT HAS NOW WORN OFF AND IS ILLEGIBLE. ALL OTHER TIES AS SHOWN BELOW.

SEPTEMBER 2, 2012- RE-CONSTRUCTION OF GERMOND ROAD COMPLETE. SET 4" BERNTSEN SPIKE AT CORNER PER TIES SHOWN ON PRE-CONSTRUCTION REPORT.

(c)(d)(e) PLAN VIEW OF CORNER WITH TIES TO AT LEAST 4 WITNESS MONUMENTS. IF IN DISAGREEMENT WITH PREVIOUSLY ESTABLISHED CORNER, SHOW THE DISTANCE BETWEEN THE TWO CORNERS AND ALSO INDICATE THE TIES TO THE DISPUTED CORNER.



NORTH BASED ON THE ONEIDA COUNTY COORDINATE SYSTEM

(i) I, ANTHONY R. JONES, REGISTERED LAND SURVEYOR NO. S-2508 HEREBY CERTIFY THAT THE CORNER LOCATION ON THIS RECORD WAS DETERMINED BY ME OR UNDER MY DIRECTION AND CONTROL AND THAT THIS U.S. PUBLIC LAND SURVEY MONUMENT RECORD IS CORRECT AND COMPLETE TO THE BEST OF MY KNOWLEDGE AND BELIEF.

SIGNATURE \_\_\_\_\_ DATE 9/2/2012

INDEX NO. N9