

U.S. PUBLIC LAND SURVEY MONUMENT RECORD

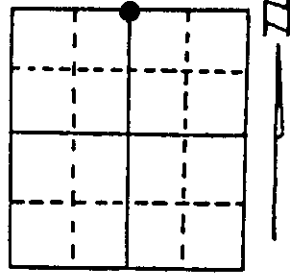
Note: This form is intended and designed to fulfill all requirements of Wisconsin Administrative Code, Chapter A-E 5.02, U.S. Public Land Survey Monument Record (3) (a) (b) (c) (d) (e) (f) (g) (h) (i). An additional sheet may be added if necessary to conform with said requirements.

(a) Corner location: Township 36 North

Range 9 East/West

Town/City/Village Pelican

County Oneida



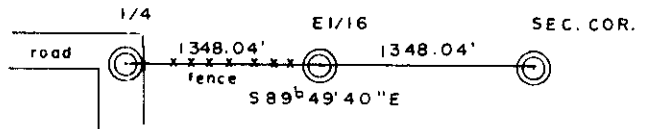
Section 20

(b) (f) (g) (h) Description of monument found at this corner and if it was accepted, state all evidence (material, testimonial, occupational, plats, records, other monuments) used as a basis for accepting. If not accepted or if nothing was found, state evidence used as basis for establishing location. If reestablished through lost corner proportionate methods, indicate all monuments, distances and directions used to establish.

Original corner set by W. W. Doubterby 1868
 Pts. N. 101, 111, 12, 13 lines, Maple St, s 22, 23, 24.

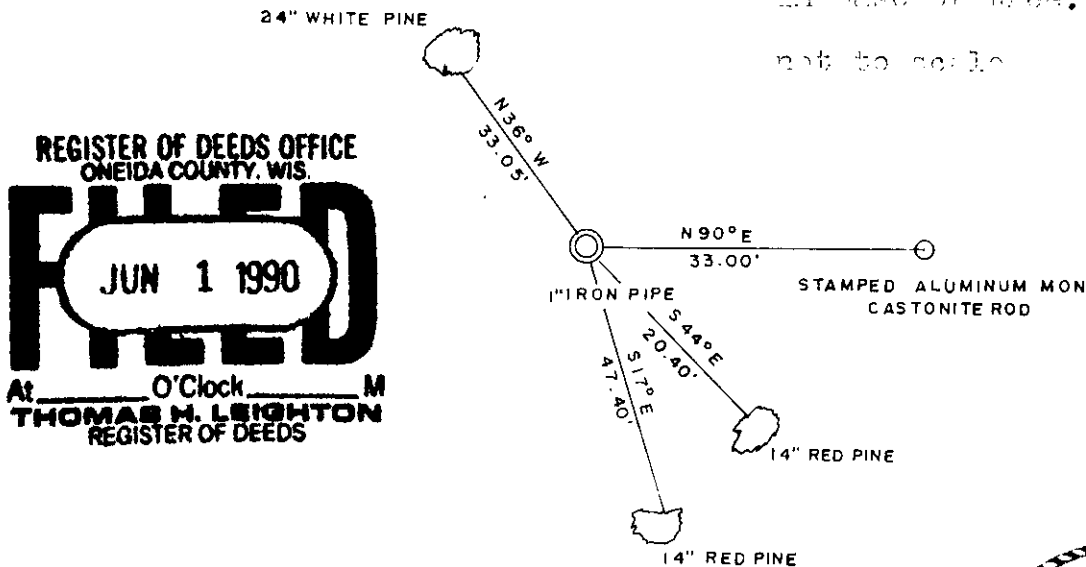
Found 1/1/66 being a 3" iron pipe 1 1/2 Pts. nailed over
 from NW cor. bearing of line follows old fence on
 corner 2 1/2 in old town road as shown on sketch map of
 Vaughan's book 2, p. 17.

Set iron pipe in dirt drive way, fence bears east, roads
 bear south and west.



(c) (d) (e) Plan view of corner with ties to at least 4 witness monuments. If in disagreement with previously established corner, show the distances between the two corners and also indicate the ties to the disputed corner.

Measurements taken with
 hand compass
 distance taken to nail
 in base of tree.
 not to scale



REGISTER OF DEEDS OFFICE
ONEIDA COUNTY, WIS.
FILED
JUN 1 1990
 At O'Clock M
THOMAS H. LEIGHTON
 REGISTER OF DEEDS

(i) I, Todd J. Loftis
 (type or print name) certify that the corner location on this record
 was determined by me or under my direction and control and that
 this U.S. Public Land Survey Monument Record is correct and
 complete to the best of my knowledge and belief.

Todd J. Loftis 5/15/1990
 Signature Date



Index No. N - 7

3609170020