

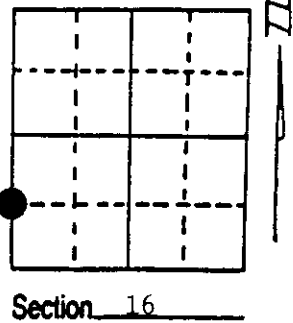
U.S. PUBLIC LAND SURVEY MONUMENT RECORD

Note: This form is intended and designed to fulfill all requirements of Wisconsin Administrative Code, Chapter A-E 7.08 U.S. Public Land Survey Monument Record (3) (a) (b) (c) (d) (e) (f) (g) (h) (i). An additional sheet may be added if necessary to conform with said requirements.

(a) Corner location: Township 36 North
 Range 9 East/West

Town/City/Village PELICAN

County ONEIDA



(b) (f) (g) (h) Description of monument found at this corner and if it was accepted, state all evidence (material, testimonial, occupational, plats, records, other monuments) used as a basis for accepting. If not accepted or if nothing was found, state evidence used as basis for establishing location. If reestablished through lost corner proportionate methods, indicate all monuments, distances and directions used to establish. Indicate type of monument found or set and sign post.

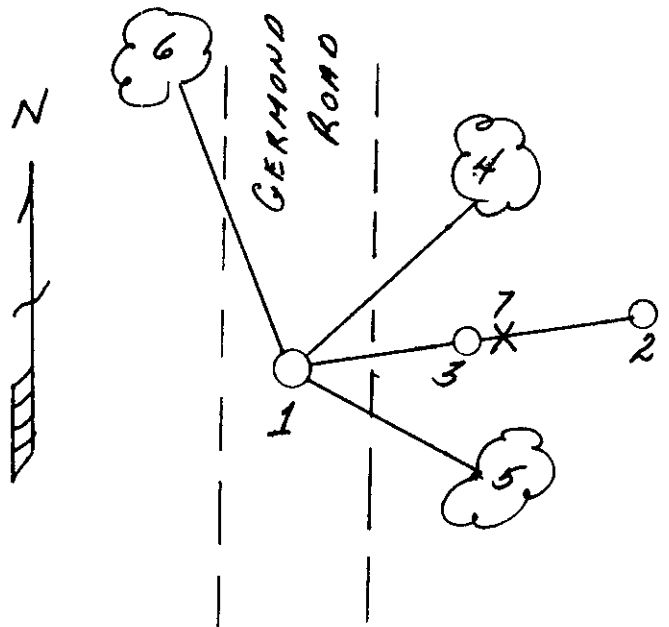
6/11/1993 - Found railroad spike in surface of road. We tied it off so position would not be lost and could be restored when road was resurfaced.

4/19/1994 - We placed a railroad spike for corner with two reference monuments; a 2" x 30" aluminum monument and a 1 1/2" iron pipe. Placed plastic sign post and made one new bearing tree. Two older BTs in good condition.

(c) (d) (e) Plan view of corner with ties to at least 4 witness monuments. If in disagreement with previously established corner, show the distances between the two corners and also indicate the ties to the disputed corner.

- 1) Railroad spike.
- 2) 2" x 30" aluminum monument, N80°E, 63.02'.
- 3) 1 1/2" iron pipe, N80°E, 31.28'.
- 4) 5" Basswood, N45°E, 47.66'.
- 5) 4" Red Oak, S80°E, 40.23'.
- 6) 12" Basswood, N28°W, 60.94'.
- 7) Plastic sign post, N80°E, 32.7'.

Distances to nail in side of BTs.
 Stump blazes scribed "BT".



(i) I, Milo E. Stefan
 (type or print name) certify that the corner location on this record was determined by me or under my direction and control and that this U.S. Public Land Survey Monument Record is correct and complete to the best of my knowledge and belief.

Milo E. Stefan
 Signature

May 9, 1994
 Date



Index No. M-9

Stamp 3609171000

JAN 25 2013

AT _____ O'CLOCK _____ M
KYLE J. FRANSON
REGISTER OF DEEDS

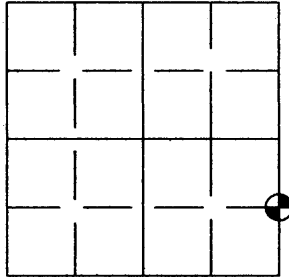
U.S. PUBLIC LAND SURVEY MONUMENT RECORD

Note: This form is intended and designed to fulfill all requirements of the Wisconsin Administrative Code, Chapter A-E 7.08 U.S. Public Land Monument Record (3)(a)(b)(c)(d)(e)(f)(g)(h)(i).
An additional sheet may be added if necessary to conform with said requirements.

(a) CORNER LOCATION: Oneida County Corner I.D. No.:

3609171000

South 1/16 Corner, Sec. 17, East Line
Township 36 North
Range 9 East
Town of Pelican
County of Oneida



SECTION 17

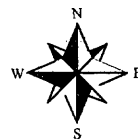
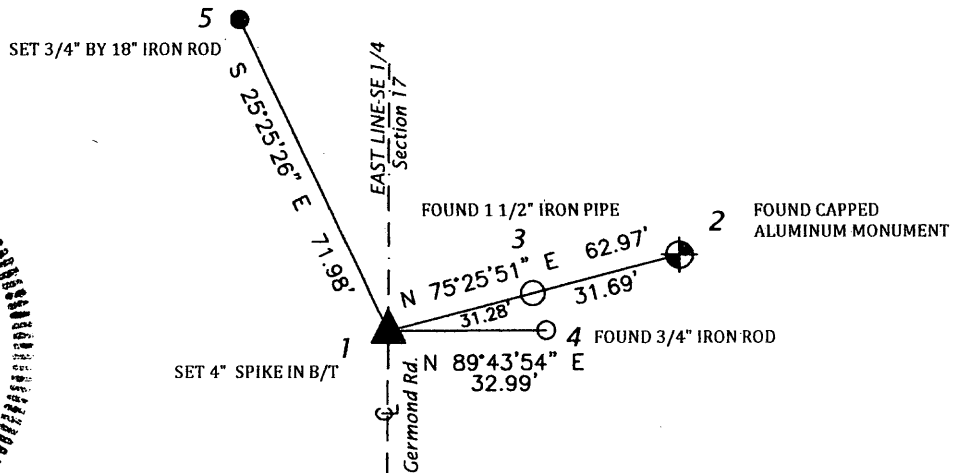
(f)(g)(h) DESCRIPTION OF MONUMENT FOUND AT THIS CORNER AND IF IT WAS ACCEPTED, STATE ALL EVIDENCE (MATERIAL, TESTIMONIAL, OCCUPATIONS, PLATS, RECORDS, OTHER MONUMENTS) USED AS A BASIS FOR ESTABLISHING LOCATION. IF NOT ACCEPTED IF NOTHING WAS FOUND, STATE EVIDENCE USED AS BASIS FOR ESTABLISHING LOCATION. IF REESTABLISHED THROUGH LOST CORNER PROPORTIONATE METHODS, INDICATE ALL MONUMENTS, DISTANCES AND DIRECTIONS USED TO ESTABLISH. INDICATE TYPE OF MONUMENT AND SIGN POST FOUND OR SET.

MAY 9, 1994 - U.S. PUBLIC LAND SURVEY MONUMENT RECORD BY MILO STEFAN CALLS MONUMENT AS SET RAILROAD SPIKE. SEE MONUMENT RECORD FOR ADDITIONAL CORNER HISTORY.

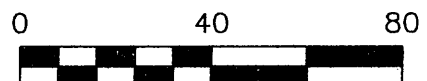
APRIL 2, 2012- PRE-CONSTRUCTION REPORT FILED BY ANTHONY JONES. FOUND S 1/16 CORNER ON EAST LINE OF SEC. 17-36-09 AS DESCRIBED. SET NEW TIES AS SHOWN BELOW. ALL OTHER TIES AS SHOWN BELOW.

SEPTEMBER 2, 2012- RE-CONSTRUCTION OF GERMOND ROAD COMPLETE. SET 4" BERNTSEN SPIKE AT CORNER PER TIES SHOWN ON PRE-CONSTRUCTION REPORT.

(c)(d)(e) PLAN VIEW OF CORNER WITH TIES TO AT LEAST 4 WITNESS MONUMENTS. IF IN DISAGREEMENT WITH PREVIOUSLY ESTABLISHED CORNER, SHOW THE DISTANCE BETWEEN THE TWO CORNERS AND ALSO INDICATE THE TIES TO THE DISPUTED CORNER.



NORTH BASED ON THE ONEIDA COUNTY COORDINATE SYSTEM



INDEX NO. M-9

(i) I, ANTHONY R. JONES, REGISTERED LAND SURVEYOR NO. S-2508 HEREBY CERTIFY THAT THE CORNER LOCATION ON THIS RECORD WAS DETERMINED BY ME OR UNDER MY DIRECTION AND CONTROL AND THAT THIS U.S. PUBLIC LAND SURVEY MONUMENT RECORD IS CORRECT AND COMPLETE TO THE BEST OF MY KNOWLEDGE AND BELIEF.

SIGNATURE _____ DATE 9/2/2012