

This form is intended to fulfill requirements of Chapter A-E 7.08 (3)(a) thru (i) U.S. Public Land Survey Monument Location Record, Wisconsin Administrative Code. Use reverse side for geodetic location data and/or other continuation purposes.

# U.S. PUBLIC LAND SURVEY MONUMENT LOCATION RECORD

Recorders Data

USPLS CORNER: WEST 1/4 CORNER SECTION: 20 TOWNSHIP: 36 NORTH RANGE: 9 EAST

NAME OF WATERWAY FOR M.C. CORNER: N/A SECTION LINE: N/A

~~(CITY/VILLAGE/TOWN)~~ OF: PELICAN COUNTY OF: ONEIDA

Description of monument found or placed and all other evidence used as the basis for monument location; including monuments and related measurements required if the corner location was reestablished by lost corner proportionate methods. Also indicate name of original surveyor, original survey date and the corner monument, bearing trees, witness or other reference monuments established; including measured bearing and distance ties, from available records.

Found upper part of an older rusted 3/4" dia by 24" long iron pipe bent flat to SW into existing gravel road surface and a rusted 60d spike with flagging, which I carefully removed to reveal plumb soil cavity at bottom end of old iron pipe as corner position, where I set a 3/4" dia. by 12" long steel shaft with uncapped top about 7" below road grade, to deter disturbance by future roadway grading.

In July/August of 1865, William E. Daugherty/GLO set a wood post as the original corner and marked OBTs, a 10" Hemlock N16°E 90 links and a 6" Bw S70°W 114 links, all of which are now obliterated.

On unknown date per Plat of Survey filed as B-1522 in Oneida County survey records, Todd Loftus, RLS 1523, referenced such survey to an iron pipe at this corner location with no ties noted.

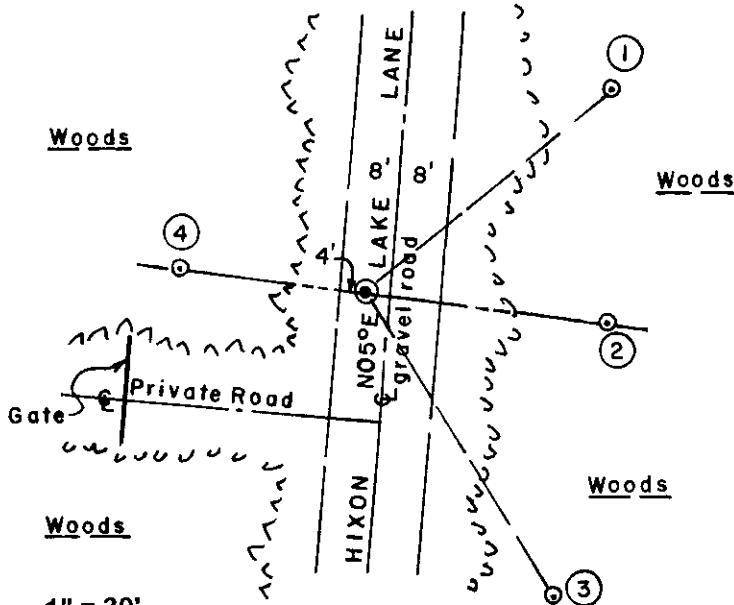
In 1997, Russell Brown, RLS 2148, referenced his Plat of Survey filed as B-3727 in Oneida County survey records, to a 1" iron pipe found at this corner location.

Standard white poly 'T' marker post set 13' West of corner monument.

I left old iron pipe and spike flat on grade next to Witness Monument No. 2.

This recovery completed April 27, 1999; there were no witnesses.

Plan view map of monument location with bearing and distance ties to a minimum of four(4) described witness or reference monuments of concrete, natural stone, iron, live bearing trees or equivalent material. If applicable, also show a minimum of two(2) bearing and distance ties to any other monument found and not accepted; including the bearing and distance from the accepted monument.



### WITNESS MONUMENT TIES:

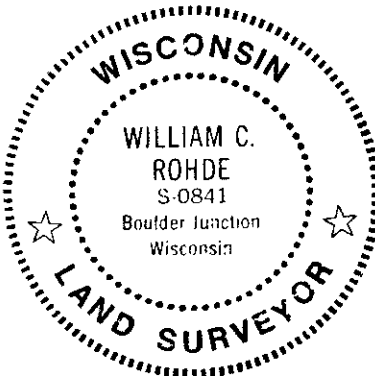
- ① New BT, 16" Pw N51°E 50.15'.
- ② 3/4" dia. by 24" long iron pipe set with yellow poly Reference Mark cap in top 3" above grade, S82°E 38.20'.
- ③ New BT, 24" Pw S31°E 56.45'.
- ④ Set a 3/4" dia. by 24" long iron pipe with yellow poly Reference Mark cap in top, into a 1.25" dia. iron pipe found in a cairn of large rocks, N82°W 29.18'.

Witness monuments at 2 and 4 are set on a right line thru center of corner monument in roadway.

SCALE: 1" = 30'

Unless otherwise indicated, all bearing tree ties are to a .25" dia. by 2.5" long PK nail with a 1.25" dia. steel washer driven into unblazed right face and a .25" dia. by 2.5" long PK nail is also driven into unblazed face of bearing tree at DBH; the basis for measured bearings is by magnetic compass to nearest degree and all tie distances are measured horizontal by steel tape corrected to nearest 1/100th feet at standard temperature of 68 degrees Fahrenheit.

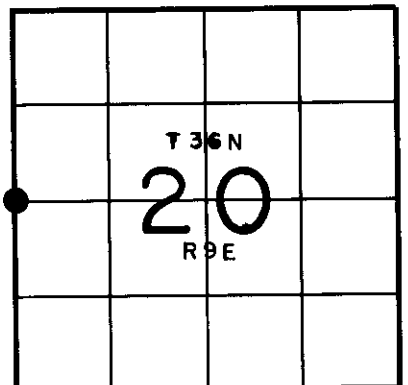
RLS SEAL:



LAND SURVEYOR CERTIFICATE:

I, William C. Rohde, hereby certify that I am duly licensed as a Professional Land Surveyor in the State of Wisconsin; that this USPLS monument location was determined by me and/or under my direct supervision and control; and that this U.S. Public Land Survey Monument Location Record is true and correct to the best of my knowledge and belief.

Signed: *William C. Rohde*  
William C. Rohde RLS 841



SECTION LOCATION MAP

INDEX NO. P 5  
3609 19 2000