

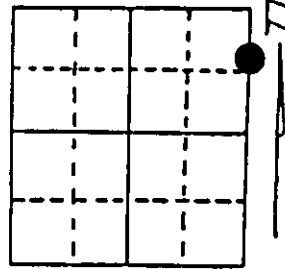
U.S. PUBLIC LAND SURVEY MONUMENT RECORD

Note: This form is intended and designed to fulfill all requirements of Wisconsin Administrative Code, Chapter A-E 7.08 U.S. Public Land Survey Monument Record (3) (a) (b) (c) (d) (e) (f) (g) (h) (i). An additional sheet may be added if necessary to conform with said requirements.

(a) Corner location: Township 36 North
 Range 9 East/West

Town/City/Village Pelican Lake

County Oneida

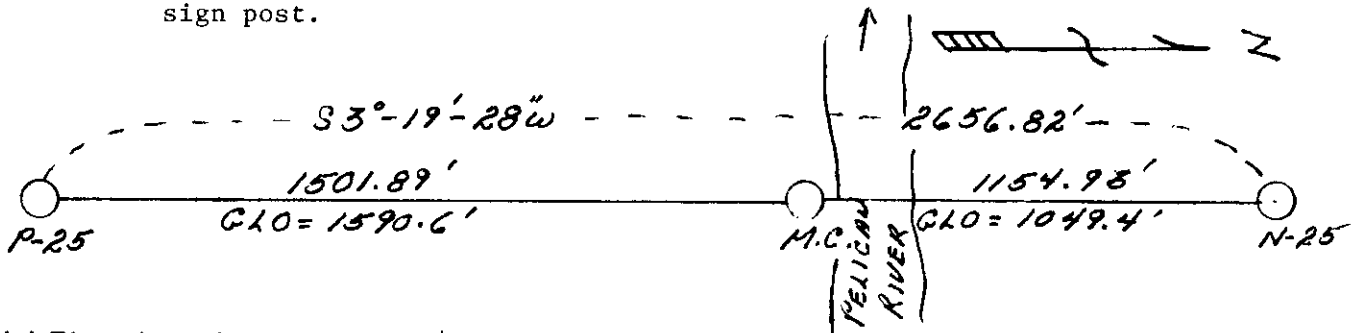


Section 24

(b) (f) (g) (h) Description of monument found at this corner and if it was accepted, state all evidence (material, testimonial, occupational, plats, records, other monuments) used as a basis for accepting. If not accepted or if nothing was found, state evidence used as basis for establishing location. If reestablished through lost corner proportionate methods, indicate all monuments, distances and directions used to establish. Indicate type of monument found or set and sign post.

1859 - H. C. Fellows established this corner at 64.10 Chains, set post for Meander Corner and one BT: 6" Tamarack, S71°E, 219 Links.

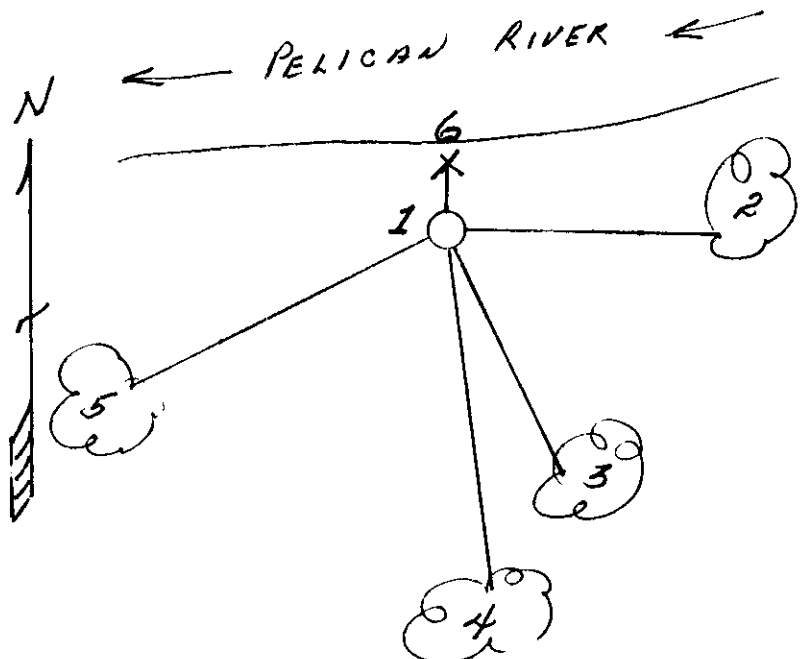
2/10/1992 - Milo E. Stefan restored this Meander Corner on the South Bank of the Pelican River as it is today. This being 1154.93'; S3°-19'-28"W of the Section Corner. We set a 2" x 30" aluminum monument with four new BTs and sign post.



(c) (d) (e) Plan view of corner with ties to at least 4 witness monuments. If in disagreement with previously established corner, show the distances between the two corners and also indicate the ties to the disputed corner.

- 1) 2" x 30" aluminum county monument.
- 2) 10" White Oak, East, 25.48'.
- 3) 8" White Oak, S29°E, 31.06'.
- 4) 12" White Oak, S7°E, 51.07'.
- 5) 14" White Oak, S54°W, 33.90'.
- 6) Plastic sign post next to monument.

Distances to nail in side of BTs.
 Stump blaze scribed "BT".



(i) I, Milo E. Stefan
 (type or print name) certify that the corner location on this record was determined by me or under my direction and control and that this U.S. Public Land Survey Monument Record is correct and complete to the best of my knowledge and belief.

Milo E. Stefan
 Signature

2/28/92
 Date



Stamp

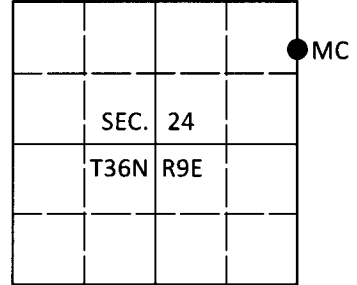
3609243300

U.S. PUBLIC LAND SURVEY MONUMENT RECORD

Note: This form is intended and designed to fulfill all requirements of Wisconsin Administrative Code, Chapter A-E 7.08 U.S. Public Land Survey Monument Record (3)(a-i).

(a) CORNER LOCATION
 Meander Cor. of Secs. 19 & 24
 Township 36 North
 Range 9 & 10 East of the 4th P.M.
 Town of Pelican
 County of Oneida

WISCRS - Oneida County
 N: 149,545.01 USft
 E: 292,426.94 USft
 Datum: NAD83(2011)
 GNSS Method: RTN - Direct
 GNSS Control: WISCRS VRS



(b) HISTORY OF ORIGINAL CORNER ESTABLISHMENT

Original Surveyor: _____ Original Accessories: _____
 Date of Survey Commenced: _____ See previous monument record(s)
 Completed: _____

(b)(f)(g)(h) Description of monument found at this corner and if it was accepted, state all evidence (material, testimonial, occupational, plats, records, other monuments) used as a basis for accepting. If not accepted or if nothing was found, state evidence used as basis for establishing location. If re-established through lost corner proportionate methods, indicate all monuments, distances and directions used to establish. Indicate type of monument and sign post found or set.

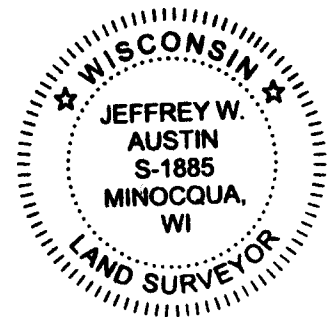
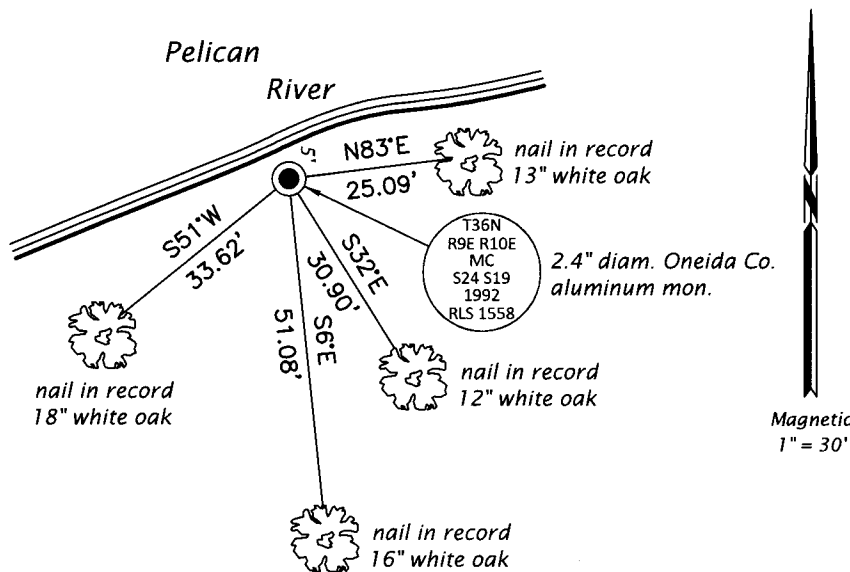
This is a perpetuation of the following monument record(s) that comprise a complete history of the corner:

Feb. 28, 1992: USPLS Monument Record No. 3609243300 by Milo E. Stefan, RLS

June 26, 2019: I found and accepted the record monument, a 2.4" diam. aluminum pipe with a 3.3" diam. Oneida Co. aluminum cap projecting 6" above the ground surface. I found or established accessories as shown below. I found a white vinyl sign post bearing Northwest, 0.5 ft.

The coordinate value shown has been verified by at least one of the following methods: 1) comparison to a previously GPS determined published value; 2) the value is the average of two or more GPS observations at a markedly different time; 3) one or more distances were measured back to the GPS observed corner from temporary GPS observed offset locations.

(c)(d)(e) Plan view of corner with ties to at least 4 witness monuments. If in disagreement with previously established corner, show the distances between the two corners and also indicate the ties to the disputed.



REGISTER OF DEEDS OFFICE
 ONEIDA COUNTY
 FILED

AUG 28 2019

KYLE J. FRANSON
 REGISTER OF DEEDS

(i) I, Jeffrey W. Austin, Professional Land Surveyor No. S-1885, hereby certify that the corner location on this record was determined by me or under my direction and control and that this U.S. Public Land Survey Monument Record is correct and complete to the best of my knowledge and belief.

[Handwritten Signature]

 Signature

JUL. 29, 2019

 Date

3609243300 (INDEX NO. N,O-25)