

U.S. PUBLIC LAND SURVEY MONUMENT RECORD

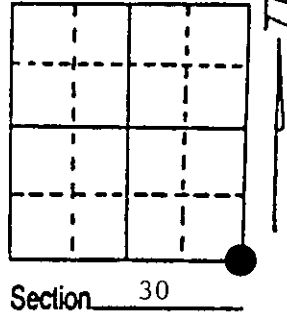
Note: This form is intended and designed to fulfill all requirements of Wisconsin Administrative Code, Chapter A-E 7.08 U.S. Public Land Survey Monument Record (3) (a) (b) (c) (d) (e) (f) (g) (h) (i). An additional sheet may be added if necessary to conform with said requirements.

(a) Corner location: Township 36 North

Range 9 East/West

Town/City/Village Pelican

County Oneida

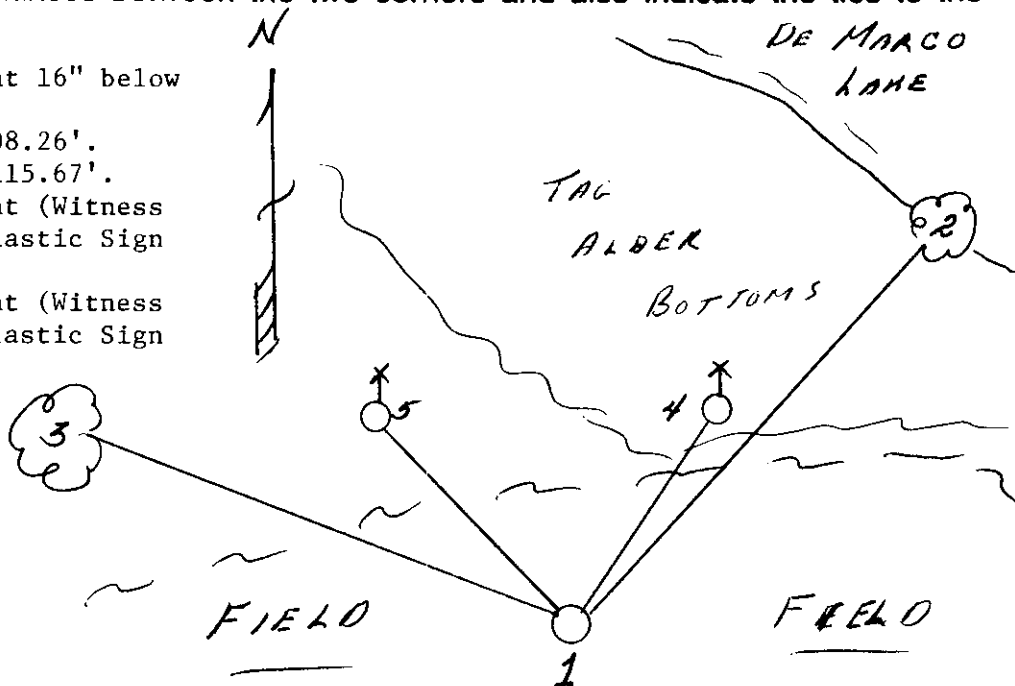


(b) (f) (g) (h) Description of monument found at this corner and if it was accepted, state all evidence (material, testimonial, occupational, plats, records, other monuments) used as a basis for accepting. If not accepted or if nothing was found, state evidence used as basis for establishing location. If reestablished through lost corner proportionate methods, indicate all monuments, distances and directions used to establish. Indicate type of monument found or set and sign post.

- 1863 - Wm. Daugherty established this corner.
- 1960 - RIPCO surveyors restored this corner and placed a 1 1/2" iron pipe with aluminum tablet and one BT: 10" White Birch, N1°E, 1.325 chains.
- 1990's - Monument was removed and found near RIPCO'S BT and was taken to County Surveyor's office.
- 3/1992 - Milo E. Stefan was requested to restore the corner by using RIPCO survey data; double the distance from South Quarter to East Sixteenth and place a new monument with Witness. We further confirmed the alignment of all monuments on the south side of Section 30 by traverse to the Section Corner common to Sections 25, 30, 31 and 36. See reverse for distances and bearings between monuments by RIPCO.

(c) (d) (e) Plan view of corner with ties to at least 4 witness monuments. If in disagreement with previously established corner, show the distances between the two corners and also indicate the ties to the disputed corner.

- 1) 2" x 30" aluminum monument 16" below surface of field.
- 2) 3" White Birch, N38°E, 108.26'.
- 3) 14" White Birch, N73°W, 115.67'.
- 4) 2" x 30" aluminum monument (Witness Corner), N24°E, 23.80'/Plastic Sign Post Alongside.
- 5) 2" x 30" Aluminum monument (Witness Corner), N42°W, 25.07'/Plastic Sign Post Alongside.



(i) I, Milo E. Stefan
 (type or print name) certify that the corner location on this record was determined by me or under my direction and control and that this U.S. Public Land Survey Monument Record is correct and complete to the best of my knowledge and belief.

Milo E. Stefan
 Signature

April 3, 1992
 Date

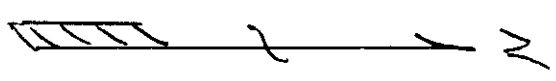


Index No. V-5

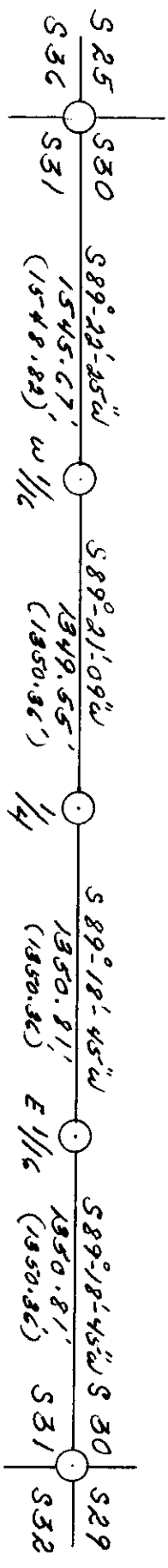
3609300000

Stamp

REGISTER OF DEEDS OFFICE
 ONEIDA COUNTY, WIS
FILED
 APR 24 1907
 At _____ O'Clock _____ M
THOMAS H. LEIGHTON
 REGISTER OF DEEDS



T36N
 R8E R9E



XXX - DISTANCES THIS SURVEY - 1992
 (XXX) - R1PCO DISTANCES - 1960
 BEARINGS ASSUMED