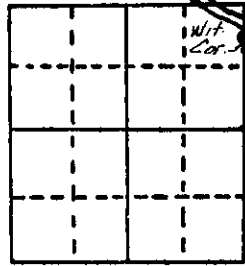


# U.S. PUBLIC LAND SURVEY MONUMENT RECORD

**Note:** This form is intended and designed to fulfill all requirements of Wisconsin Administrative Code, Chapter A-E 5.02, U.S. Public Land Survey Monument Record (3) (a) (b) (c) (d) (e) (f) (g) (h) (i). An additional sheet may be added if necessary to conform with said requirements.

(a) Corner location: Township 36 North  
 Range 10 East/West

MEANDER CORNER  
 Right bank of  
 Pelican River



Town/City/Village Pelican

County Oneida

Section 6

(b) (f) (g) (h) Description of monument found at this corner and if it was accepted, state all evidence (material, testimonial, occupational, plats, records, other monuments) used as a basis for accepting. If not accepted or if nothing was found, state evidence used as basis for establishing location. If reestablished through lost corner proportionate methods, indicate all monuments, distances and directions used to establish.

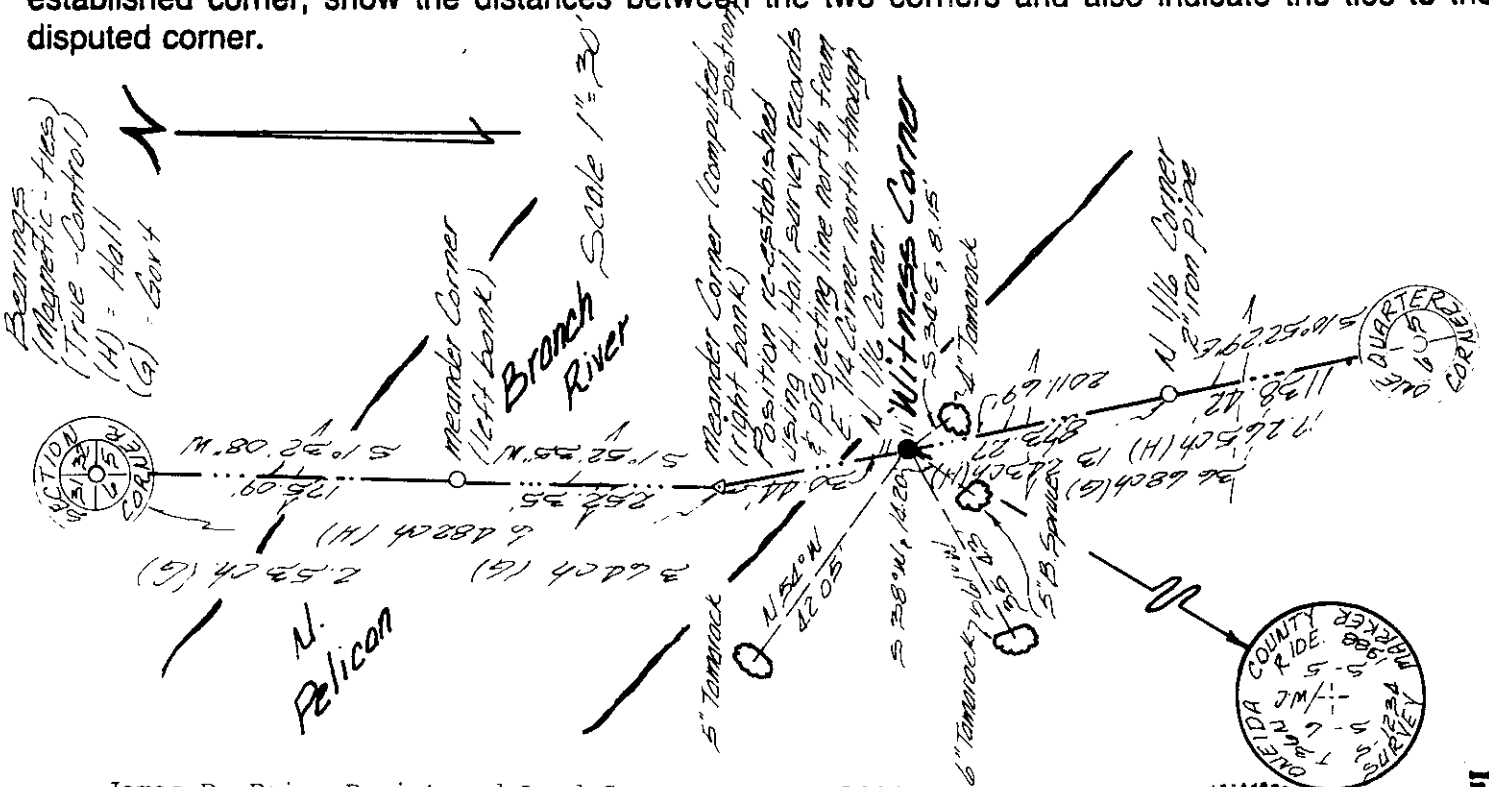
August 1863 - William E. Daugherty, Deputy Surveyor - Right bank Pelican River set M.C. post. Made BT's: Tamarac 6 S15°E, 47 links Tamarac 8" S24°W, 13 links.

November 12, 1930 - Harry C. Hall, Oneida County Surveyor - "Identify Original M.C. both BT's but corner location identified by tall galvanized pipe and several old rotted down stakes. Is set with government distances reversed."

February 6, 1950 - Genisot Engineering Co. Map #434-A - Identifies corner as being referenced by "Original Government BT" Tam 6" S15°E 47 links

March 1988 - James D. Rein, RLS. - Re-establish corner position using H.C. Hall's Survey records and projection section line north from 1/4 corner through 1/6 corner. Note: The record position places this corner in Pelican River approximately 20 feet from existing bank, thus I set a witness corner as shown in plan view. Set plastic stake 1 foot North-west of witness corner.

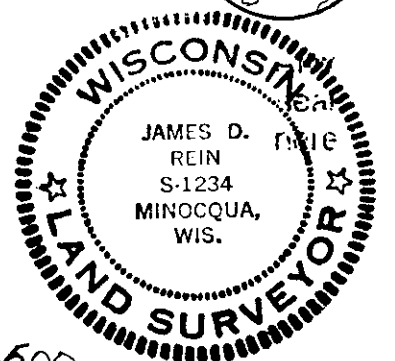
(c) (d) (e) Plan view of corner with ties to at least 4 witness monuments. If in disagreement with previously established corner, show the distances between the two corners and also indicate the ties to the disputed corner.



(i) I, James D. Rein, Registered Land Surveyor No. S-1234  
 (type or print name) certify that the corner location on this record was determined by me or under my direction and control and that this U.S. Public Land Survey Monument Record is correct and complete to the best of my knowledge and belief.

James D. Rein  
 Signature

April 9th, 1988  
 Date



3610063600

Index No. A B 5 (Right Bank)