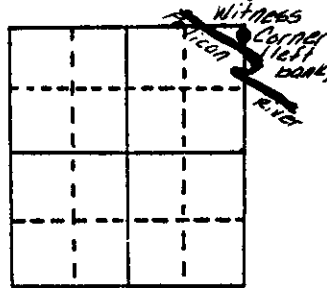


# U.S. PUBLIC LAND SURVEY MONUMENT RECORD

**Note:** This form is intended and designed to fulfill all requirements of Wisconsin Administrative Code, Chapter A-E 5.02, U.S. Public Land Survey Monument Record (3) (a) (b) (c) (d) (e) (f) (g) (h) (i). An additional sheet may be added if necessary to conform with said requirements.

(a) Corner location: Township 36 North  
 Range 10 East/West

MEANDER CORNER  
 Left bank of  
 Pelican River



Town/City/Village Pelican  
 County Oneida

Section 6

(b) (f) (g) (h) Description of monument found at this corner and if it was accepted, state all evidence (material, testimonial, occupational, plats, records, other monuments) used as a basis for accepting. If not accepted or if nothing was found, state evidence used as basis for establishing location. If reestablished through lost corner proportionate methods, indicate all monuments, distances and directions used to establish.

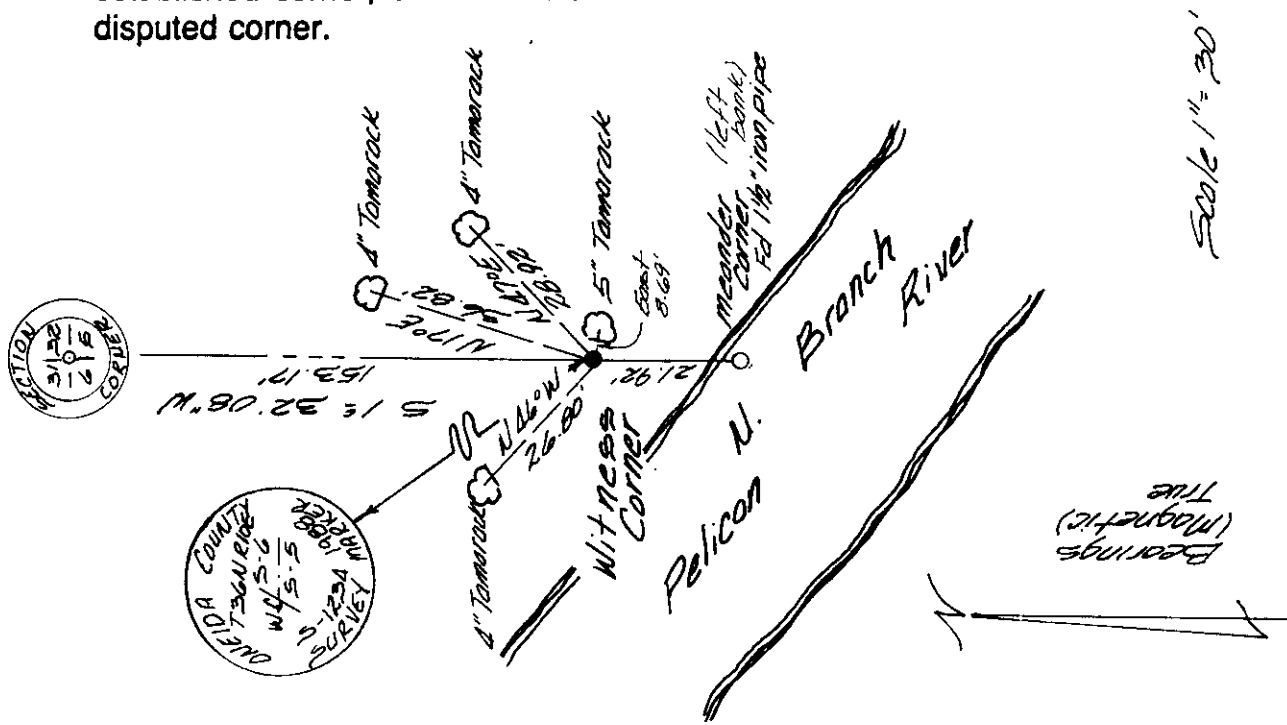
August 1863 - William E. Daugherty - Deputy Surveyor - Left bank Pelican River  
 Set M.C. post. Original BT's: Tamarac N17 1/2° E, 15 links; Tamarac 9" N62° E, 32 links.

January 1931 - Harry C. Hall - County Surveyor - Found Original MC - on left bank

February 6, 1950 - Genisot Engineering Co. Map 'b' 137-A - Identifies MC corner as being monumented with iron pipe.

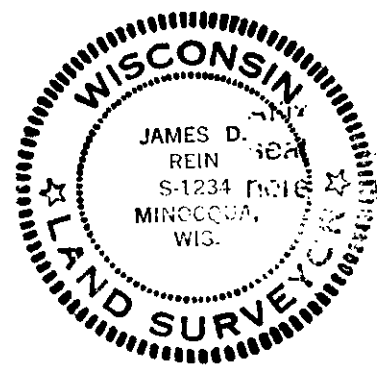
March 1988 - James D. Rein, RLS - Found 1 1/2" dia iron pipe below ice in river ± 6 feet from left bank. Set witness corner to the meander corner, a capped 2" dia x 60" long piston type aluminum monument. Made bearing trees to witness corner with aluminum nails in center of root crowns on side of tree facing corner. Set plastic stake 1 1/2 feet Southwest of witness corner.

(c) (d) (e) Plan view of corner with ties to at least 4 witness monuments. If in disagreement with previously established corner, show the distances between the two corners and also indicate the ties to the disputed corner.



(i) I, James D. Rein, Registered Land Surveyor No. s-1234  
 (type or print name) certify that the corner location on this record was determined by me or under my direction and control and that this U.S. Public Land Survey Monument Record is correct and complete to the best of my knowledge and belief.

James D. Rein Signature  
April 9th, 1988 Date



Index No. A-B-5 (Bank)

3610063900