

U.S. PUBLIC LAND SURVEY MONUMENT RECORD

COUNTY: ONEIDA COUNTY, WI

SECTION 8
 TOWNSHIP 36 N
 RANGE 10 E

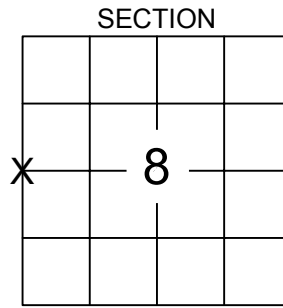
CORNER NO.
3610072000

CORNER IDENTITY: WEST 1/4 CORNER.
 MONUMENT TYPE: 2.5" O.D. IRON PIPE WITH BRASS CAP
 COORDINATE: N: 159423.73 E: 297693.33
 SYSTEM: WISCRS, ONEIDA COUNTY
 DATUM: NAD83(2011)
 METHOD: RTK/VRS (WCSA SURVEY GRADE DEF.)
 DATE OF SURVEY: 01/27/2026
 SURVEY PARTY: DYLAN KUDRONOWICZ & JOHN FREIDEL

FOUND
 SET
 RESET
 RE-TIED

TOWN OF PELICAN
 CITY, VILLAGE, TOWN

Oneida County
 Land Information Office
 Filed
3/30/2026



LOCATION
 (Indicated By X)

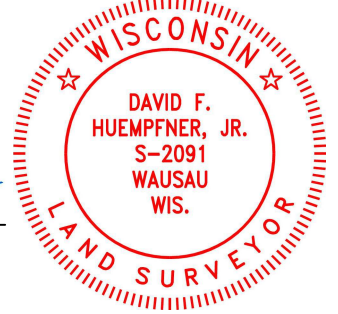
BASIS FOR MONUMENT LOCATION:

- **AUGUST, 1863:** W. DAUGHERTY SET "QUARTER SECTION POST" 40 CHAINS SW AND NW SECTION CORNER.
- **FEBRUARY, 1937:** K. HALL "DROVE IRON PIPE" 2678.3' FROM SW AND NW SECTION CORNER.
- **APRIL, 1954:** I. BRANHAM FOUND "I.P.-BR. CAP. - POST & BTs" AT 40.59 CHAINS (2679') FROM SW SECTION CORNER.
- **9/23/2025:** BECHER HOPPE FOUND 2.5" O.D. IRON PIPE WITH BRASS CAP (STAMPED "1/4", "7", "8"), 2675.40' SOUTH OF NW SECTION CORNER, 2678.1' NORTH OF SW SECTION CORNER (CALCULATED FROM SURVEY B7721). NO BEARING TREES FOUND. NO MONUMENT RECORD ON FILE WITH ONEIDA COUNTY. HELD CAPPED PIPE AS CORNER. SET 4 WITNESS MONUMENTS AS SHOWN BELOW AND TIED.

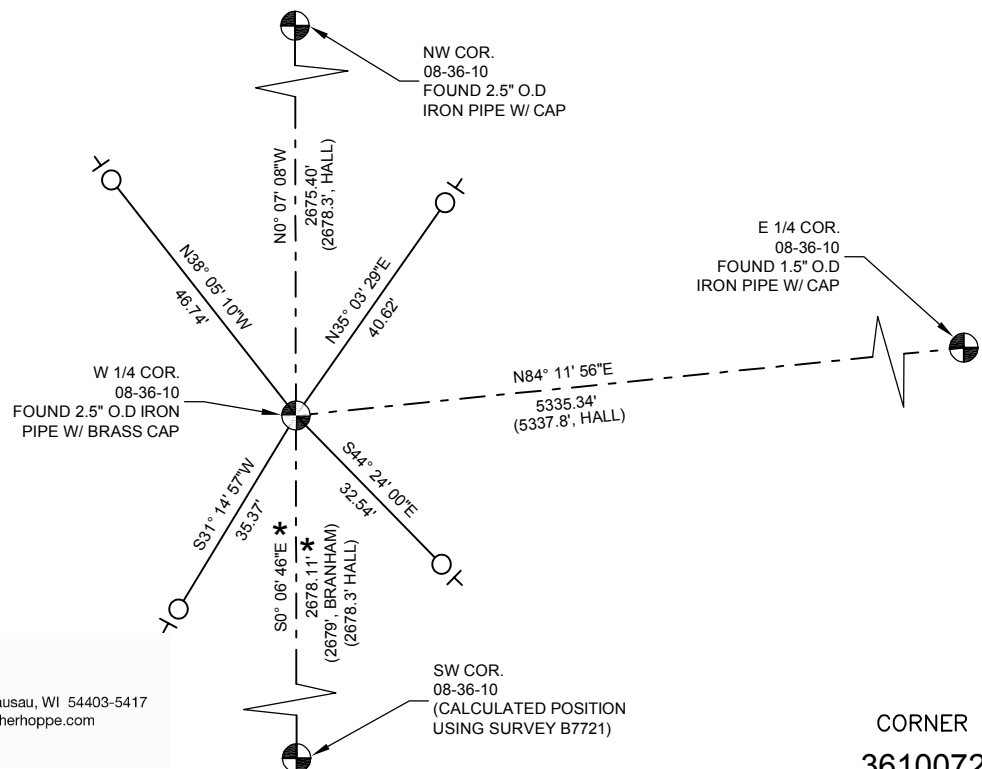
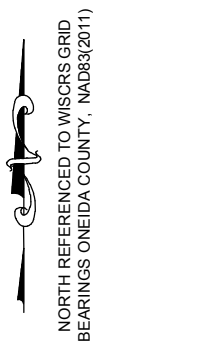
I hereby certify that I have complied with Wisconsin Administrative Code A-E 7.08, and that this U.S. public land survey monument record is correct and complete to the best of my knowledge and belief.

Becher Hoppe Associates, Inc.
 David F. Huempfer, Jr., S-2091

Date: 3/25/2026



TIE SKETCH: (ALL DISTANCES HORIZONTAL)



- SET 1" O.D. X 30" ALUMINUM PIPE W/ 2.5" DIA. ONEIDA COUNTY ALUMINUM CAP
- ⊥ SET WHITE T-POST SURVEY MARKER
- () RECORDED AS
- * CALCULATED BEARING / DISTANCE USING SURVEY B 7724



330 N. 4th Street, Wausau, WI 54403-5417
 715-845-8000 | becherhoppe.com

CORNER NO.
3610072000