

CERTIFIED LAND CORNER RESTORATION

Index No. N-3

State of Wisconsin }
County of Oneida } ss.

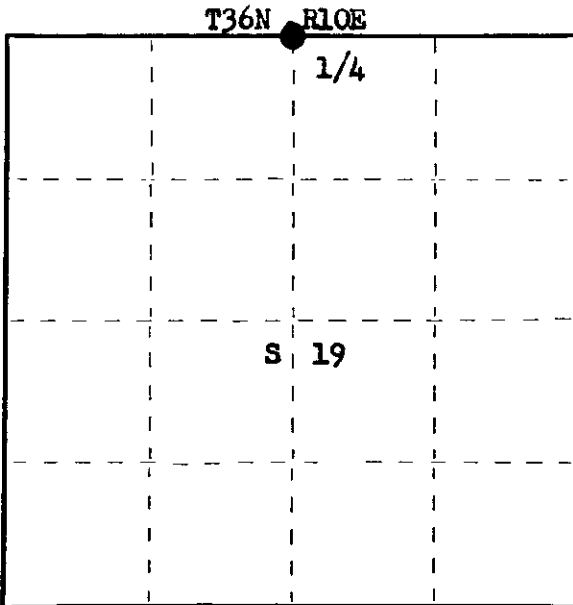
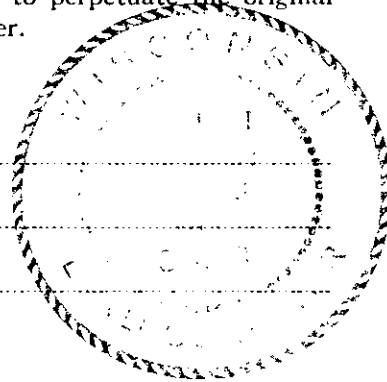
I, Philip T. Hansen, do hereby certify that on the 31st day of December, 1976, I found evidence of the Quarter corner of Section 18 & 19 Township 36, North, Range 10 East, Fourth Principal Meridian, as described hereon; and that from this evidence I established a new monument and accessories as described hereon to perpetuate the original location of this corner.

Resident witnesses:

Glen Barker

Jim Claflin

Herb Wagoner



○ = Corner monument restored.

History of original corner establishment:

Original Corner established by Wm. E. Dougherty, Deputy Surveyor, in 1863, from which Tamarack 6" bears N 36° W 234 links and Tamarack 7" bears S 56° E 316 links.

Corner recovered by D.H. Vaughan, County Surveyor, in 1915. Set new post and marked NBTs - White Pine 12" N 27° E 31 links and White Pine 10" S 82½° E 33-3/4 links.

H.C. Lawrence, Registered Land Surveyor, recovered old iron pipe and Vaughan's post. Recovered stumps of Vaughan's BTs. Set new post and marked NBT - Tamarack 6" N 65° E 48½ links.

Description of corner evidence found:

Recovered 2½" iron pipe with brass cap stamped:

Origin of this monument unknown. A rock cairn had been placed around base of pipe.

Recovered a piece of Vaughan's old post and Lawrence's post, scribed 1/4S S18, 1/4S S19 laying on rock cairn.

Recovered OBTs - White Pine 12" N 27° E 3 links, now a decayed stump.

Tamarack 6" N 65° E 48.5 links; however, it had been pushed out of place by bulldozer for highline clearing.

18
14
19

Description of monument and accessories I established to perpetuate the original location of this corner.

As the iron pipe was in very good condition, it was left in place.

Monument projects 2½' above ground.

Corner sets 50 links west of west edge of highline R.O.W. and 2 chains south of B.

NBTs - Jack Pine 12" S 80° W 85.7 links, scribed 1/4 BT.

Jack Pine 6" S 2° E 63.4 links, scribed 1/4 BT.

Oak 8" N 38° W 52.2 links, scribed 1/4 BT.

Dated at Rhineland, Wis., this 24th day of January, 1977

Signature Philip T. Hansen Title Registered Land Surveyor Registration No. S-498
(County Surveyor, Registered Land Surveyor, or other duly authorized official)

Office of Register of Deeds, County of Oneida, I hereby certify that the within instrument was filed in this office for record on the 24th day of February, 1977 at 1:00 o'clock P. M.

Doris Verage Kuehn
(Register of Deeds)

By..... Deputy

FORM 985 M. C. MILLER CO., MILWAUKEE

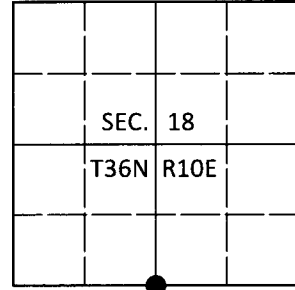
3610180020

U.S. PUBLIC LAND SURVEY MONUMENT RECORD

Note: This form is intended and designed to fulfill all requirements of Wisconsin Administrative Code, Chapter A-E 7.08 U.S. Public Land Survey Monument Record (3)(a-i).

(a) CORNER LOCATION
 1/4 Cor. of Secs. 18 & 19
 Township 36 North
 Range 10 East of the 4th P.M.
 Town of Pelican
 County of Oneida

WISCORS - Oneida County
 N: 151,250.02 USft
 E: 295,045.70 USft
 Datum: NAD83(2011)
 GNSS Method: RTN - Offset
 GNSS Control: WISCORS VRS



(b) HISTORY OF ORIGINAL CORNER ESTABLISHMENT

Original Surveyor: _____ Original Accessories: _____
 Date of Survey Commenced: _____ See previous monument record(s)
 Completed: _____

(b)(f)(g)(h) Description of monument found at this corner and if it was accepted, state all evidence (material, testimonial, occupational, plats, records, other monuments) used as a basis for accepting. If not accepted or if nothing was found, state evidence used as basis for establishing location. If re-established through lost corner proportionate methods, indicate all monuments, distances and directions used to establish. Indicate type of monument and sign post found or set.

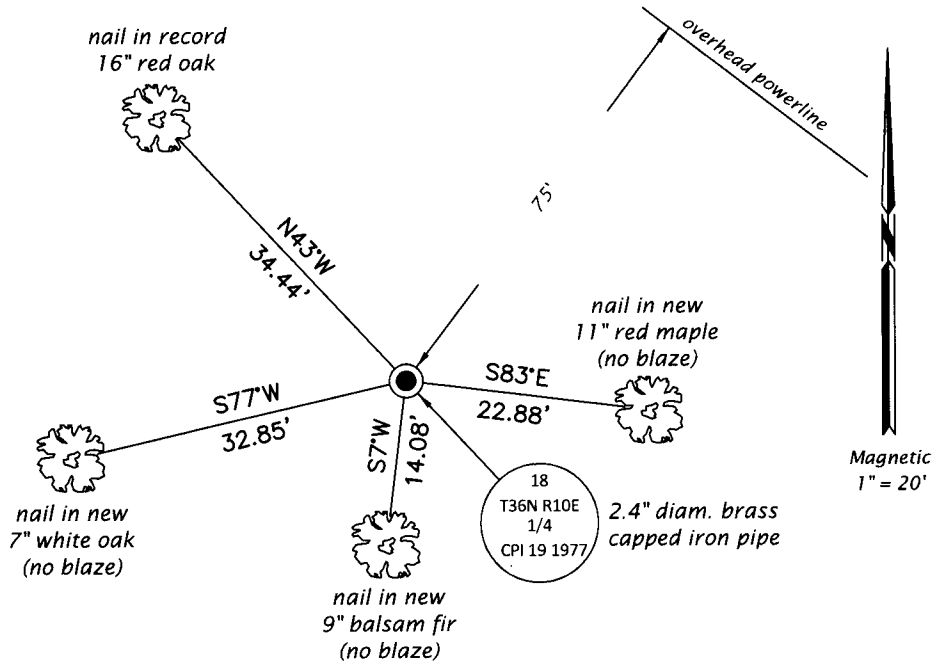
This is a perpetuation of the following monument record(s) that comprise a complete history of the corner:

Jan. 24, 1977: Certified Land Corner Restoration No. 3610180020 by Philip T. Hansen, RLS

June 25, 2019: I found and accepted the record monument, a 2.4" diam. iron pipe with a 2.4" diam. brass cap projecting 30" above a collar of stone. The record bearing tree at S2°E is standing dead. The record bearing tree at S80°W is gone. I found or established accessories as shown below. I found a white vinyl sign post bearing South, 0.7 ft.

The coordinate value shown has been verified by at least one of the following methods: 1) comparison to a previously GPS determined published value; 2) the value is the average of two or more GPS observations at a markedly different time; 3) one or more distances were measured back to the GPS observed corner from temporary GPS observed offset locations.

(c)(d)(e) Plan view of corner with ties to at least 4 witness monuments. If in disagreement with previously established corner, show the distances between the two corners and also indicate the ties to the disputed.



REGISTER OF DEEDS OFFICE
 ONEIDA COUNTY
 FILED

AUG 28 2019

KYLE J. FRANSON
 REGISTER OF DEEDS

(i) I, Jeffrey W. Austin, Professional Land Surveyor No. S-1885, hereby certify that the corner location on this record was determined by me or under my direction and control and that this U.S. Public Land Survey Monument Record is correct and complete to the best of my knowledge and belief.


 Signature

JUL 26, 2019
 Date

3610180020 (INDEX NO. N-3)