

CERTIFIED LAND CORNER RESTORATION

Index No. 25

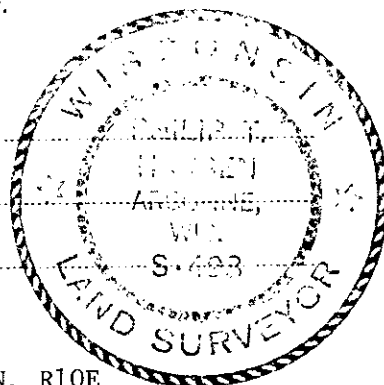
State of Wisconsin }  
County of Oneida } ss.

I, Philip T. Hansen, do hereby certify that on the 8th day of September, 1975, I found evidence of the Section corner of S19, S20, S30, S29 Township 36, North, Range 10 East, Fourth Principal Meridian, as described hereon; and that from this evidence I established a new monument and accessories as described hereon to perpetuate the original location of this corner.

Resident witnesses.

Glen Barker

Jim Claflin



History of original corner establishment:  
Original corner established by Wm. E. Dougherty, Government Deputy Surveyor, in 1863 from which tamarack 8" bears S31°W, 8 links and yellow pine 10" bears S76°E, 77 links.  
Corner recovered by H.C. Lawrence, Registered Land Surveyor, in 1948. Found an old stake and stump of original yellow pine BT. Only the burned charred facing of the BT blaze and evidence of BT notch remained. Found stump of original tamarack BT S31°W, 8 links. Set new tamarack post and marked new BT Norway pine 16, S18°W, 83 links. Also the North vertical face of light gray boulder 5' high bears S5°W, 62 links.

Description of corner evidence found:  
Recovered 4" tamarack post, squared and scribed S19, S20, S29, S30, in poor condition. Also 3/4" x 18" iron pipe driven in beside it.  
Recovered - Original yellow pine 10" S76°E 77 links - now a decayed stump  
Norway pine 16" S18°W 83 links - now a cut-off stump

Description of monument and accessories I established to perpetuate the original location of this corner.  
Replaced 4" tamarack post with 2 1/2" iron pipe with brass cap stamped -

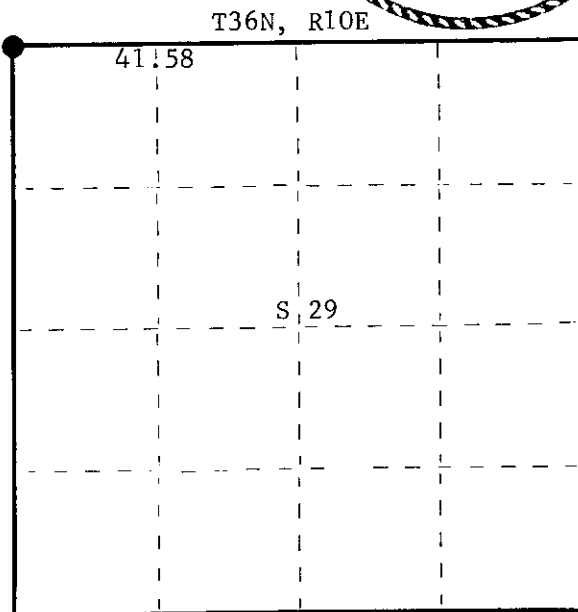
NBT's - W. oak 7" S10°W 63.0 links scribed SC BT  
Tamarack 6" N9°E 117.5 links scribed SC BT

S498  
T36N, R10E

S19 | S20  
S30 | S29

CPI-1975

FCRM 985 H. C. MILLER CO., MILWAUKEE



○ = Corner monument restored.

Dated at Rhineland, Wis., this 19th day of September, 1975

Signature Philip T. Hansen Title Registered Land Surveyor Registration No. S-498  
(County Surveyor, Registered Land Surveyor, or other duly authorized official)

Office of Register of Deeds, County of Oneida. I hereby certify that the within instrument was filed in this office for record on the 17th day of November, 1975 at 12:00 o'clock P. M.

Louis Verage Kuehn  
(Register of Deeds)

By.....Deputy

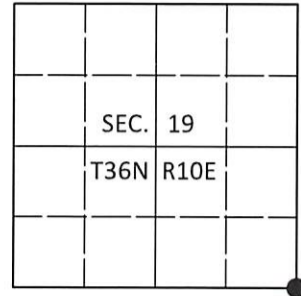
3610190000

**U.S. PUBLIC LAND SURVEY MONUMENT RECORD**

Note: This form is intended and designed to fulfill all requirements of Wisconsin Administrative Code, Chapter A-E 7.08 U.S. Public Land Survey Monument Record (3)(a-i).

(a) CORNER LOCATION  
 Cor. of Secs. 19, 20, 29 & 30  
 Township 36 North  
 Range 10 East of the 4th P.M.  
 Town of Pelican  
 County of Oneida

WISCRS - Oneida County  
 N: 146,383.89 USft  
 E: 297,417.17 USft  
 Datum: NAD 83(2011)  
 GNSS Method: RTN - Direct  
 GNSS Control: WISCORS VRS



(b) HISTORY OF ORIGINAL CORNER ESTABLISHMENT

Original Surveyor: \_\_\_\_\_ Original Accessories: \_\_\_\_\_  
 Date of Survey Commenced: \_\_\_\_\_ See previous monument record(s)  
 Completed: \_\_\_\_\_

(b)(f)(g)(h) Description of monument found at this corner and if it was accepted, state all evidence (material, testimonial, occupational, plats, records, other monuments) used as a basis for accepting. If not accepted or if nothing was found, state evidence used as basis for establishing location. If re-established through lost corner proportionate methods, indicate all monuments, distances and directions used to establish. Indicate type of monument and sign post found or set.

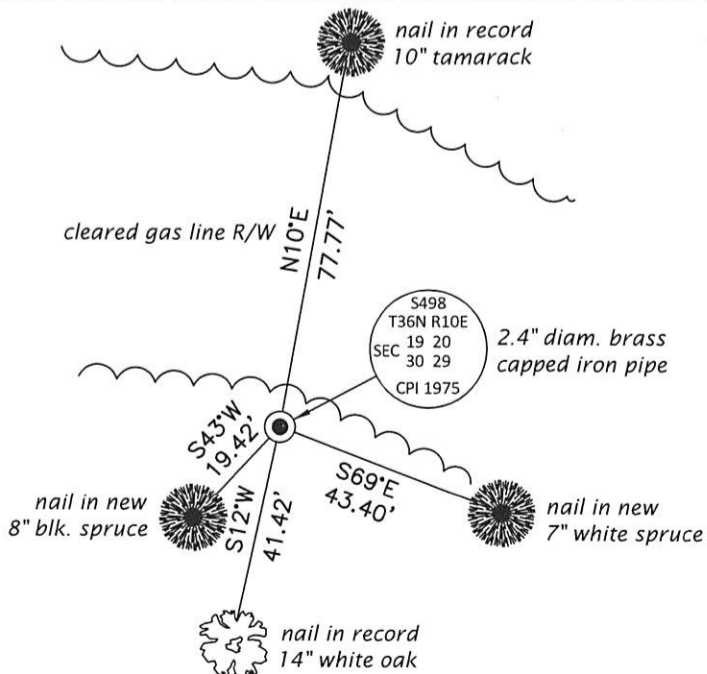
*This is a perpetuation of the following monument record(s) that comprise a complete history of the corner:*

*Sep. 19, 1975: USPLS Monument Record No. 3610190000 by Philip T. Hansen, PLS*

*Dec. 4, 2020: I found and accepted the record monument, a 2.4" diam. iron pipe with a 2.4" diam. brass cap projecting 18" above the ground surface. I found or established accessories as shown below. I set a white vinyl sign post bearing South, 0.7 ft.*

*The coordinate value shown has been verified by at least one of the following methods: 1) comparison to a previously GPS determined published value; 2) the value is the average of two or more GPS observations at a markedly different time; 3) one or more distances were measured back to the GPS observed corner from temporary GPS observed offset locations.*

(c)(d)(e) Plan view of corner with ties to at least 4 witness monuments. If in disagreement with previously established corner, show the distances between the two corners and also indicate the ties to the disputed.



REGISTER OF DEEDS OFFICE  
 ONEIDA COUNTY  
 FILED

JAN 13 2021

KYLE J. FRANSON  
 REGISTER OF DEEDS

(i) I, Jeffrey W. Austin, Professional Land Surveyor No. S-1885, hereby certify that the corner location on this record was determined by me or under my direction and control and that this U.S. Public Land Survey Monument Record is correct and complete to the best of my knowledge and belief.

\_\_\_\_\_  
 Signature Date 15 DEC 2020