

CERTIFIED LAND CORNER RESTORATION

Index No. R9

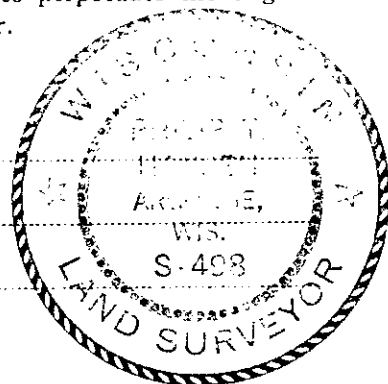
State of Wisconsin }
County of Oneida } ss.

I, Philip T. Hansen, do hereby certify that on the 8th day of September, 1975, I found evidence of the Section corner of 20, 21, 28, and 29 Township 36, North, Range 10 East, Fourth Principal Meridian, as described hereon; and that from this evidence I established a new monument and accessories as described hereon to perpetuate the original location of this corner.

Resident witnesses:

Glen Barker

Jim Claflin



History of original corner establishment:
Original corner established by Wm. E. Dougherty, Government Deputy Surveyor, in June, 1963 from which aspen 8" bears S41°E, 48 links and aspen 8" bears N54°W, 208 links.
Corner recovered by B.F. Dorr, County Surveyor, in 1903. Dorr's notes indicate he had found the original BT's for this corner. Established NBT Norway pine N1°W, 30 links.
Corner recovered by H.C. Lawrence, Registered Land Surveyor, in 1948. Identified corner from Dorr's Norway pine BT which measured 20" DBH. Marked NBT Norway pine 14", N43½°E, 51 links.

Description of corner evidence found:

Recovered 4" cedar post, squared and scribed S20, S21, S28, and S29, in fair condition. Also a 3/4" x 12" iron pipe buried beside the post. This corner sets in the road bed of old abandoned Highway 8.

Recovered OBT Dorr's Norway pine, N1°W, 30 links, now a cut-off and decaying stump, scribed BT. Recovered Norway pine 14" (15"), N43½°E (N46°E), 51.5 links, scribed S21, bottom notch grown over.

A U.S. Department of Interior elevation bench mark (brass cap) bears S18°E, 5.3 links from true corner.

Description of monument and accessories I established to perpetuate the original location of this corner.

Set a 2½" iron pipe with brass cap for a witness corner 60 links North stamped - S498

The iron pipe was left in place at true corner.

OBT and NBT bearings and measurements are made from true corner.

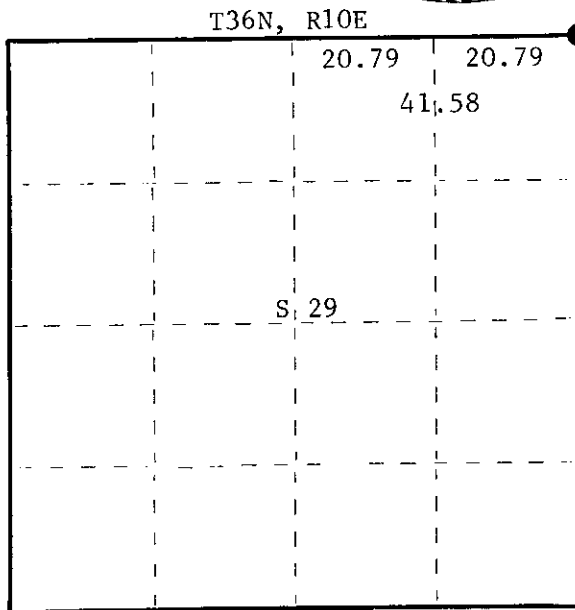
T36N, R10E

S20 | S21
S29 | S28 WC

N 60 links

CPI-1975

FORM 985 R. C. MILLER CO., MILWAUKEE



○ = Corner monument restored.

Dated at Rhineland, Wis., this 19th day of September, 1975.

Signature Philip T. Hansen Title Registered Land Surveyor Registration No. S-498
(County Surveyor, Registered Land Surveyor, or other duly authorized official)

Office of Register of Deeds, County of Oneida. I hereby certify that the within instrument was filed in this office for record on the 17th day of November, 1975 at 10:00 o'clock A M.

Doris Verage Kuehn
(Register of Deeds)

By _____ Deputy

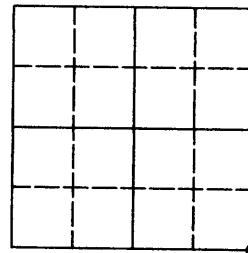
361020000

U.S. PUBLIC LAND SURVEY MONUMENT RECORD

Note: This form is intended and designed to fulfill all requirements of the Wisconsin Administrative Code, Chapter A-E 7.08 U.S. Public Land Monument Record (3)(a)(b)(c)(d)(e)(f)(g)(h)(i). An additional sheet may be added if necessary to conform with said requirements.

(a) CORNER LOCATION: Oneida County Corner I.D. No.:

South East Section Corner 3610200000
Section 20
Township 36 North
Range 10 East
Town of Pelican
County of Oneida



SECTION 20

(b) HISTORY OF ORIGINAL CORNER ESTABLISHMENT

Original Surveyor: Wm. Daugherty
Date of Survey: 1863
Corner Marker Set: Wood Post

Original B.T.'S
8" Aspen S41°E, 48 lks
8" Aspen N54°W, 208 lks

(f)(g)(h) DESCRIPTION OF MONUMENT FOUND AT THIS CORNER AND IF IT WAS ACCEPTED, STATE ALL EVIDENCE (MATERIAL, TESTIMONIAL, OCCUPATIONS, PLATS, RECORDS, OTHER MONUMENTS) USED AS A BASIS FOR ESTABLISHING LOCATION. IF NOT ACCEPTED OF IF NOTHING WAS FOUND, STATE EVIDENCE USED AS BASIS FOR ESTABLISHING LOCATION. IF REESTABLISHED THROUGH LOST CORNER PROPORTIONATE METHODS, INDICATE ALL MONUMENTS, DISTANCES AND DIRECTIONS USED TO ESTABLISH. INDICATE TYPE OF MONUMENT AND SIGN POST FOUND OR SET.

1975- See tie sheet by Philip Hansen for monument record prior to 1975.

1986-1995: Glen Barker for Consolidated Papers, Inc notes found 1" iron pipe with WC

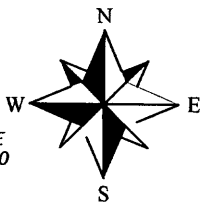
1995- William Bandow notes a found 3/4" iron pipe.

June 30, 2011- Anthony R. Jones found 1" o.d. iron pipe 6" below ground. Found WC south as shown on Hansen tie sheet and added new witness corners as shown below. Did not recover OBT by Dorr N1°W, 30 lks. U.S. Dept. of Interior elevation benchmark has been lost.

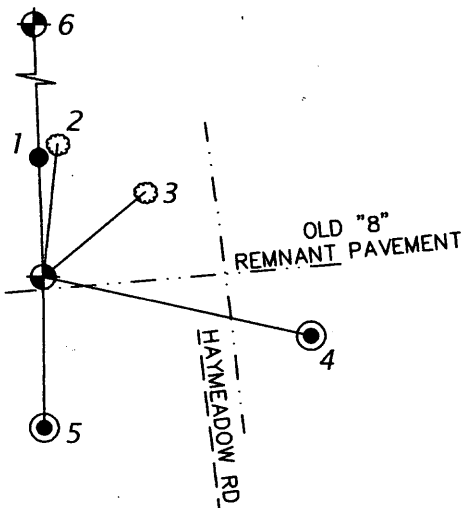
(c)(d)(e) PLAN VIEW OF CORNER WITH TIES TO AT LEAST 4 WITNESS MONUMENTS. IF IN DISAGREEMENT WITH PREVIOUSLY ESTABLISHED CORNER, SHOW THE DISTANCE BETWEEN THE TWO CORNERS AND ALSO INDICATE THE TIES TO THE DISPUTED CORNER.

- 1: FOUND DOT R.O.W. POST, 31' NORTH
- 2: SET 60D SPIKE IN 15" RED PINE W/CPI SIGN
N 05°41'25" E, 34.71'
- 3: SET 60D SPIKE IN 24" RED PINE W/ BLUE PAINT N 49°51'36" E, 34.58'
(N43 1/2°E, 51.5 lks)
- 4: SET 3/4" BY 18" IRON ROD
- 5: FOUND 2 1/2" IRON ROD WITH BRASS CAP STAMPED AS SHOWN ON HANSEN TIE SHEETS 00°49'51" E, 39.49' (60 lks, SOUTH)
- 6: FOUND 2 1/2" IRON PIPE WITH BRASS CAP MARKING EAST 1/14 CORNER SECTION 20
N 02°34'11" W, 2492.69'

FOUND 1" IRON PIPE AS NOTED BY HANSEN



BEARINGS BASED ON THE WEST LINE OF THE SE 1/4 OF SECTION 20-36-10 MEASURED AS: S02°34'11" E.



(i) I, ANTHONY R. JONES, REGISTERED LAND SURVEYOR NO. S-2508 HEREBY CERTIFY THAT THE CORNER LOCATION ON THIS RECORD WAS DETERMINED BY ME OR UNDER MY DIRECTION AND CONTROL AND THAT THIS U.S. PUBLIC LAND SURVEY MONUMENT RECORD IS CORRECT AND COMPLETE TO THE BEST OF MY KNOWLEDGE AND BELIEF.

SIGNATURE

DATE

6/30/2011



INDEX NO. R9

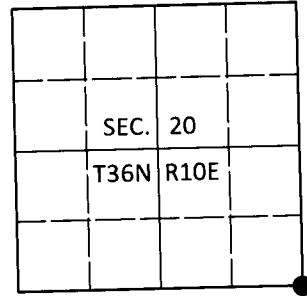
3610200000

U.S. PUBLIC LAND SURVEY MONUMENT RECORD

Note: This form is intended and designed to fulfill all requirements of Wisconsin Administrative Code, Chapter A-E 7.08 U.S. Public Land Survey Monument Record (3)(a-i).

(a) CORNER LOCATION
 Cor. of Secs. 20, 21, 28 & 29
 Township 36 North
 Range 10 East of the 4th P.M.
 Town of Pelican
 County of Oneida

WISCRS - Oneida County
 N: 146,468.50 USft
 E: 302,962.38 USft
 Datum: NAD83(2011)
 GNSS Method: RTN - Direct
 GNSS Control: WISCORS VRS



(b) HISTORY OF ORIGINAL CORNER ESTABLISHMENT

Original Surveyor: _____ Original Accessories: _____
 Date of Survey Commenced: _____ See previous monument record(s)
 Completed: _____

(b)(f)(g)(h) Description of monument found at this corner and if it was accepted, state all evidence (material, testimonial, occupational, plats, records, other monuments) used as a basis for accepting. If not accepted or if nothing was found, state evidence used as basis for establishing location. If re-established through lost corner proportionate methods, indicate all monuments, distances and directions used to establish. Indicate type of monument and sign post found or set.

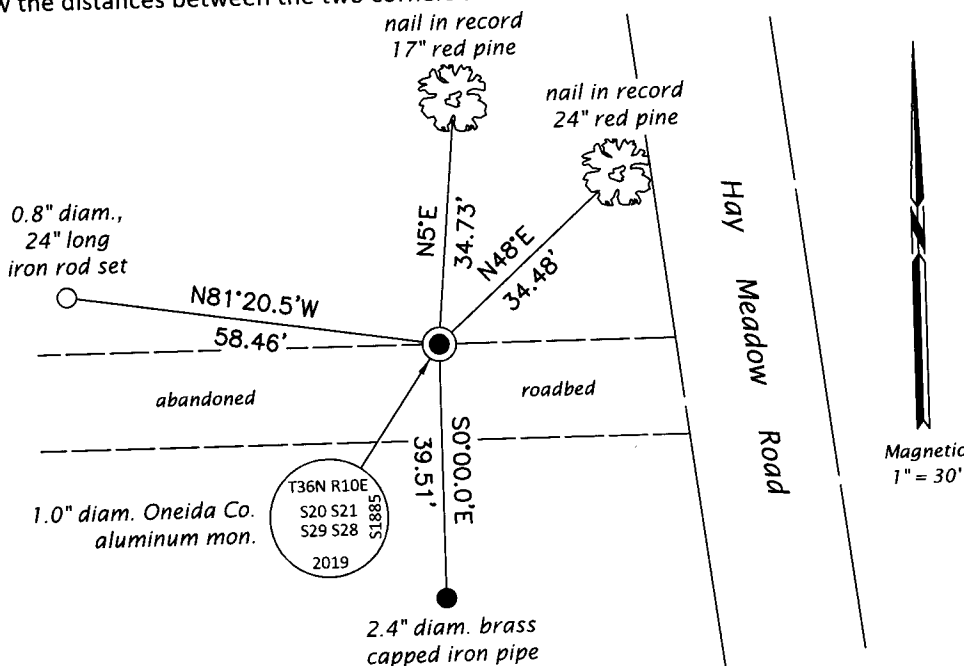
This is a perpetuation of the following monument record(s) that comprise a complete history of the corner:

June 30, 2011: USPLS Monument Record No. 3610200000 by Anthony R. Jones, RLS.

June 26, 2019: I found and accepted the record monument, a 1.0" diam., 16" long iron pipe buried 6" deep. In place of the pipe, I set a 1.0" diam., 30" long aluminum pipe with a 2.5" diam. Oneida Co. aluminum cap buried 6" deep. I found or established accessories as shown below. I set a white vinyl sign post adjacent to the brass capped iron pipe.

The coordinate value shown has been verified by at least one of the following methods: 1) comparison to a previously GPS determined published value; 2) the value is the average of two or more GPS observations at a markedly different time; 3) one or more distances were measured back to the GPS observed corner from temporary GPS observed offset locations.

(c)(d)(e) Plan view of corner with ties to at least 4 witness monuments. If in disagreement with previously established corner, show the distances between the two corners and also indicate the ties to the disputed.



REGISTER OF DEEDS OFFICE
 ONEIDA COUNTY
 FILED

AUG 28 2019

KYLE J. FRANSON
 REGISTER OF DEEDS

(i) I, Jeffrey W. Austin, Professional Land Surveyor No. S-1885, hereby certify that the corner location on this record was determined by me or under my direction and control and that this U.S. Public Land Survey Monument Record is correct and complete to the best of my knowledge and belief.

[Signature]
 Signature _____ Date Jul. 29, 2019