

CERTIFIED LAND CORNER RESTORATION

Index No. R-8

State of Wisconsin

County of Oneida } ss.

I Phillip T. Hansen, do hereby

certify that on the 4th day

established May, 1979, I ~~found~~

~~recovered~~ the E 1/16

corner of Sections 20 and 29

Township 36, North, Range

10 East, Fourth Principal Meridian,

as described hereon; and that from this evidence

I established a new monument and accessories

as described hereon to perpetuate the original

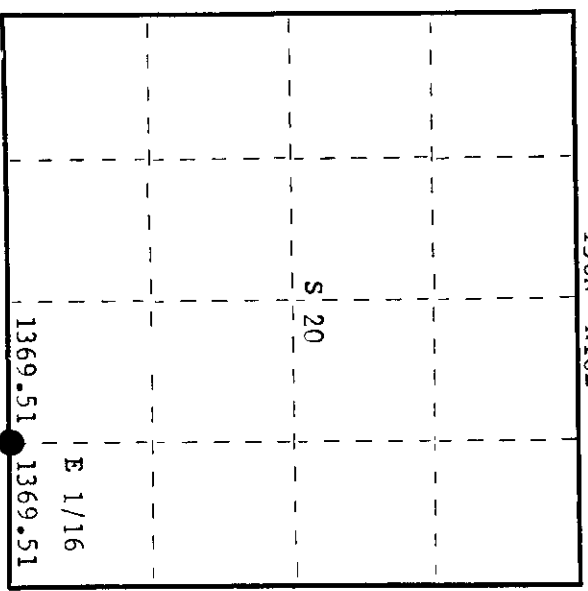
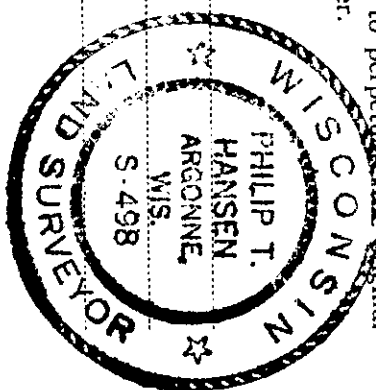
location of this corner.

Resident witnesses:

Glen Barker

Jim Claffin

Herb Wagoner



○ = Corner monument restored.

History of original corner establishment:

Corner established by H.C. Lawrence, Registered Land Surveyor, in 1948. Set the E 1/16 at 20.79 chains equidistant from section corner 20, 21, 28 and 29 and 1/4 corner. Set a wood post. This was recovered in 1975 and perpetuated with an iron pipe.

Description of corner evidence found:

Corner established by traverse and computation while subdividing section 20. Computed location of our corner is 1369.51' at bearing S 89° 19' 03" W of section corner 20, 21, 28 and 29. This point is 1.60 feet S 30° E of H.C. Lawrence's location.

Description of monument and accessories I established to perpetuate the original location of this corner.

Moved the 1-1/2" iron pipe with 2" brass cap from Lawrence's location to the computed position.
Monument projects 18" above ground - cap stamped:
Marked NBT's - S498
Cedar 10" N58°W 47.9 feet, scribed 1/16 BT. S 20
Hi Line Pole #1593, S46°W 60.90 feet, scribed B.O. E 1/16 S 29
CPI-1975

Dated at Rhinelander, Wis., this 14th day of May, 1979

Signature Phillip T. Hansen Title Registered Land Surveyor Registration No. S-498
(County Surveyor, Registered Land Surveyor, or other duly authorized official)

Office of Register of Deeds, County of Oneida I hereby certify that the within instrument was filed in this office for record on the 21st day of May, 1979 at 2:00 o'clock P. M.

Doris George Fischer
(Register of Deeds)

By Doris George Fischer Deputy

3610200010