

CERTIFIED LAND CORNER RESTORATION

Index No. V-21

State of Wisconsin

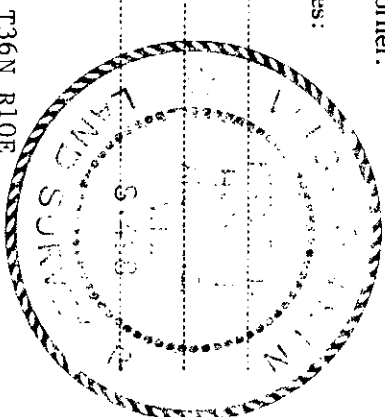
County of Oneida } ss.

I Philip T. Hansen, do hereby certify that on the 11th day of November, 1975, I found evidence of the Section corner of Sections 25, 26, 35, and 36 Township 36, North, Range 10 East, Fourth Principal Meridian, as described hereon; and that from this evidence I established a new monument and accessories as described hereon to perpetuate the original location of this corner.

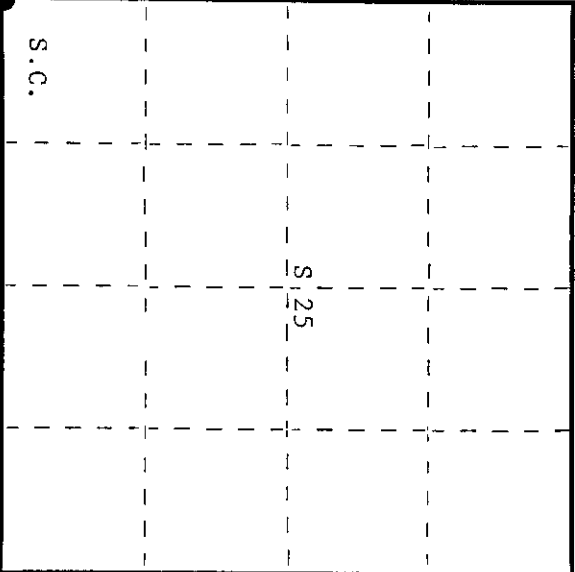
Resident witnesses:

Glen Barker

Jim Clafflin



T36N R10E



○ = Corner monument restored.

History of original corner establishment:

Original corner established by Wm. E. Dougherty, Deputy Surveyor, in 1863, from which aspen 6" bears N21°W, 65 links and yellow pine 20" bears S15°E, 40 links. Corner recovered by H.C. Hall in 1933. He states he recovered the SE BT. Set new post and marked NBT - Yellow Pine 13" N70°W 160-1/2 links. Corner recovered by H.C. Lawrence, Registered Land Surveyor, in 1951. Recovered old scribed fence post and OBT - Yellow Pine 13" N70°W 160-1/2 links  
Set new cedar post and marked NBT's - Yellow Pine 14" N52°W 122-1/2 links and Yellow Pine 14" S35°W 186 links in open field.

Description of corner evidence found:

Recovered Lawrence's 4" cedar post, squared and scribed S25, S26, S35, S36, in poor condition. This corner sits in the Y of Leith Road and an old road that bears west. Recovered OBT's - N. Pine 16"(18") S35°W 186 links - scribing grown over N. Pine 14"(16") N52°W 122.5 links - this BT was not scribed

Description of monument and accessories I established to perpetuate the original location of this corner.

Replaced Lawrence's 4" cedar post with 1-1/2" OD x 4' iron pipe, driven flush with the ground for true corner. As this is in danger of being destroyed, we set a 2-1/2" iron pipe with brass cap as a witness corner south 60 links.  
Cap stamped - S498  
Pipe projects 24" above ground. T36N R10E  
NBT's - R. Pine 8" S74°E 74 links - scribed SC BT S  
R. Pine 9" N31°W 99.3 links - scribed SC BT e 26/25 W.C.  
Measurements and bearing to OBT's and NBT's from true corner. c. 35/36  
Pipe and BT's painted blue. N. 60 links  
CPI - 1975

Dated at Rhinelander, Wis., this 17th day of November, 1975.

Signature: Philip T. Hansen Title: Registered Land Surveyor Registration No. S-498  
(County Surveyor, Registered Land Surveyor, or other duly authorized official)

Office of Register of Deeds, County of Oneida  
Instrument was filed in this office for record on the 4th day of January, 1977 at 2:00 o'clock P.M.

Debra Heritage Kuehn  
(Register of Deeds)

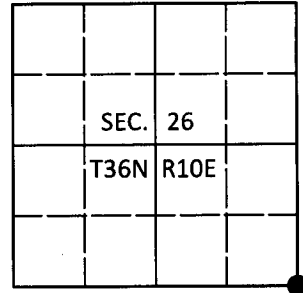
By: Deputy

# U.S. PUBLIC LAND SURVEY MONUMENT RECORD

Note: This form is intended and designed to fulfill all requirements of Wisconsin Administrative Code, Chapter A-E 7.08 U.S. Public Land Survey Monument Record (3)(a-1).

(a) CORNER LOCATION  
 Cor. of Secs. 25, 26, 35 & 36  
 Township 36 North  
 Range 10 East of the 4th P.M.  
 Town of Monico  
 County of Oneida

WISCORS - Oneida County  
 N: 140,760.96 USft  
 E: 319,164.16 USft  
 Datum: NAD 83(2011)  
 GNSS Method: RTN - Direct  
 GNSS Control: WISCORS VRS



(b) HISTORY OF ORIGINAL CORNER ESTABLISHMENT

Original Surveyor:

Original Accessories:

Date of Survey Commenced:  
 Completed:

See previous USPLS Monument Record

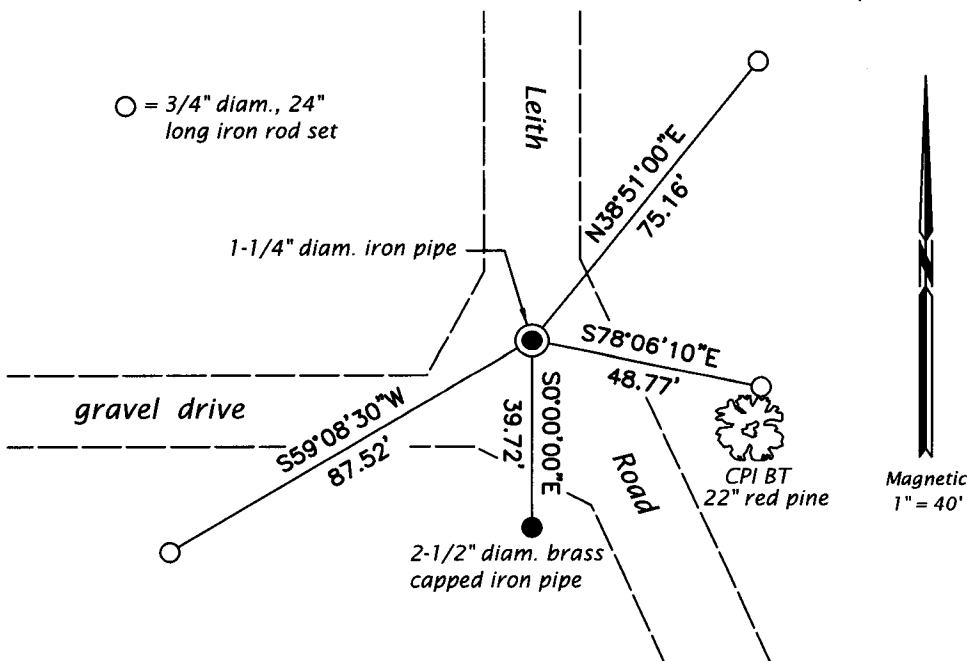
(b)(f)(g)(h) Description of monument found at this corner and if it was accepted, state all evidence (material, testimonial, occupational, plats, records, other monuments) used as a basis for accepting. If not accepted or if nothing was found, state evidence used as basis for establishing location. If re-established through lost corner proportionate methods, indicate all monuments, distances and directions used to establish. Indicate type of monument and sign post found or set.

*This is a perpetuation of a previous USPLS Monument Record by Philip T. Hansen, RLS dated November 17, 1975 and filed in the office of the Oneida County Register of Deeds. A complete history of the corner can be found on the previous monument record. I accept the previous location as a true and faithful perpetuation or reestablishment of the original corner location and further perpetuate it as follows.*

*June 20, 2018: I found and accepted the record monument, a 1-1/4" diam., 54" long iron pipe with top bent at 90°. I cut the pipe to 36" long and reset it buried 8" beneath the road surface. The record bearing trees at: N31°W, N52°W and S35°W are now stumps. I found or established accessories as shown below. I set a white vinyl sign post adjacent to the brass capped iron pipe.*

*The coordinate value shown has been verified by at least one of the following methods: 1) comparison to a previously GPS determined published value; 2) the value is the average of two or more GPS observations at a markedly different time; 3) one or more distances were measured back to the GPS observed corner from temporary GPS observed offset locations.*

(c)(d)(e) Plan view of corner with ties to at least 4 witness monuments. If in disagreement with previously established corner, show the distances between the two corners and also indicate the ties to the disputed.



REGISTER OF DEEDS OFFICE  
 ONEIDA COUNTY  
 FILED

JUL 12 2018

KYLE J. FRANSON  
 REGISTER OF DEEDS

(i) I, Jeffrey W. Austin, Professional Land Surveyor No. S-1885, hereby certify that the corner location on this record was determined by me or under my direction and control and that this U.S. Public Land Survey Monument Record is correct and complete to the best of my knowledge and belief.

*[Handwritten Signature]*  
 \_\_\_\_\_  
 Signature

JUNE 30, 2018  
 \_\_\_\_\_  
 Date