

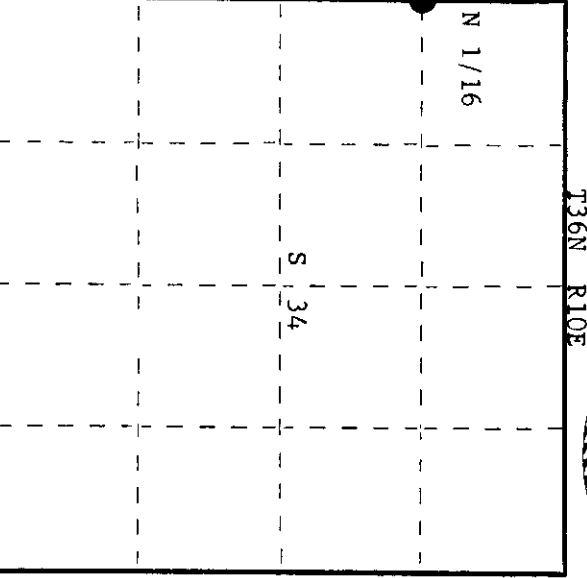
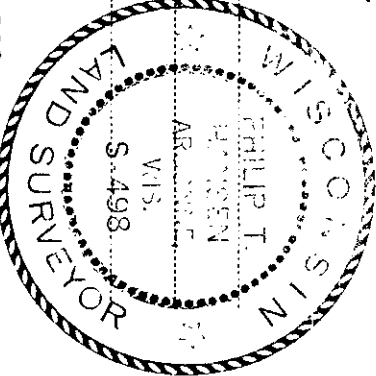
CERTIFIED LAND CORNER RESTORATION

Index No. W-13

State of Wisconsin }
 County of Oneida } ss.

I Phillip T. Hansen, do hereby certify that on the 11th day of July, 1977, I found evidence of the N 1/16 corner of Section 33 & 34 Township 36 North, Range 10 East, Fourth Principal Meridian, as described hereon; and that from this evidence I established a new monument and accessories as described hereon to perpetuate the original location of this corner.

Resident witnesses:
 Glen Barker
 Jim Clafflin
 Herb Wagoner



○ = Corner monument restored.

History of original corner establishment:

Corner established by D.H. Vaughan, County Surveyor, in 1905. Marked BTs - Yellow Pine 14" N8°E, 22 links; Yellow Pine 20" N20°W, 23 links. Corner recovered by H.C. Lawrence, Registered Land Surveyor, in 1954. Recovered stumps of Vaughan's BT intact. Set new post and marked NBTs - White Birch 10" N61°W, 30 links; S. Maple 9" N10°E, 39 links.

Description of corner evidence found:

Recovered point of Lawrence's cedar post.
 Recovered OBTs - Vaughan's Yellow Pine 14" N8°E, 22 links, now a rotted stump, scribing 1/8S BT still visible.
 Yellow Pine 20" N20°W, 23 links, now a decayed stump.
 Lawrence's Yellow Birch 10" (14") N61°W, 30 links, scribed N 1/16 S33.
 Maple 9" (12") N10°E, 39 links, scribed S34 NBT.

361033 3000

Description of monument and accessories I established to perpetuate the original location of this corner. Replaced point of Lawrence's post with 1 1/2" iron pipe with 2" brass cap, stammed: Monument projects 18" above ground.

S498
 T36N R10E
 S33 | S34
 CPI-1977

Dated at Rhineland, Wis., this 12th day of July, 1977

Signature: Phillip T. Hansen Title: Registered Land Surveyor Registration No. S-498
 (County Surveyor, Registered Land Surveyor, or other duly authorized official)
 Office of Register of Deeds, County of Oneida
 Instrument was filed in this office for record on the 5th day of August, 1977 at 9:00 o'clock A.M.

Signature: Dorinda Vernege Kuehn
 (Register of Deeds)

By _____ Deputy