

CERTIFIED LAND CORNER RESTORATION

Index No. **A-17**

State of Wisconsin

County of Oneida } ss.

I Phillip T. Hansen, do hereby certify that on the 6th day of September, 1978, I found evidence of the Section Corner corner of 34, 35, 2 and 3 Township 36, 35, North, Range 10 East, Fourth Principal Meridian, as described hereon; and that from this evidence I established a new monument and accessories as described hereon to perpetuate the original location of this corner.

Resident witnesses:
Jim Claflin
Herb Wagoner
John Masbaum

History of original corner establishment:

Original corner established by Hiram C. Fellows, Deputy Surveyor, in 1859, from which tamafack 7' bears N 14° W, 18 links; Fir 14" bears N 75° E, 22 links; hemlock 8" bears S 11° E, 18 links and aspen 9" bears S 50° W, 12 links.

H.C. Lawrence recovered an iron pipe and cedar BT's in 1949. No evidence was recovered at this time of any original BT's.
 Ripco surveyors tied into this corner in 1961.

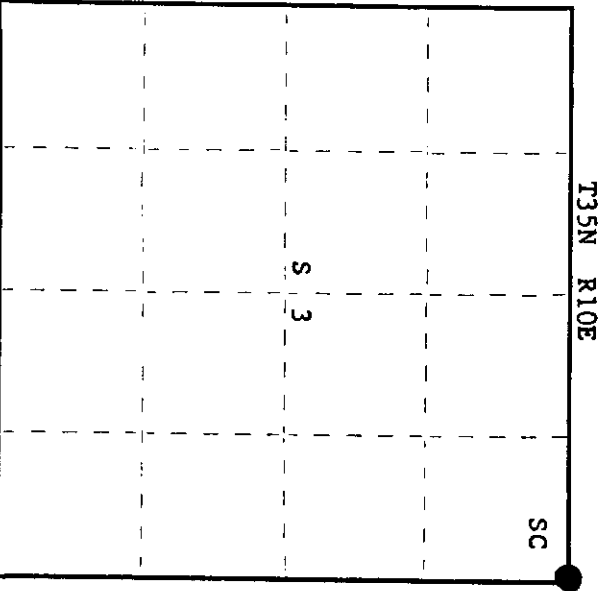
Description of corner evidence found:

Recovered an Oneida County iron monument, not stamped, Ripco's 2" iron pipe with 3" square brass cap and H.C. Lawrence's 5" cedar post scribed S2 T35N S35, T36N S34, R10E - S3.
 Recovered OBT's - cedar 10" S40°E, 41.5 feet, scribing partly legible.
 cedar 10" S63°W, 27.3 links, scribing partly legible.
 cedar 12" S3°W, 10.3 links, axe marks and blazes.

Description of monument and accessories I established to perpetuate the original location of this corner.

Removed H.C. Lawrence's post and county monument. Left Ripco's iron pipe as recovered. Monument projects 28" above ground. Cap stamped:

Marked NBT's - cedar 7" N70°E, 25.7 links T36N R10E
 maple 9" N25°E, 20.1 links, scribed SC BT S34 S35
 T35N R10E



○ = Corner monument restored.

Dated at Rhineland, Wis., this 25th day of September, 1978

Signature: Phillip T. Hansen Title: Registered Land Surveyor Registration No. S-498
 (County Surveyor, Registered Land Surveyor, or other duly authorized official)

Office of Register of Deeds, County of Oneida I hereby certify that the within instrument was filed in this office for record on the 9th day of October, 1978 at 3:30 o'clock P. M.

Dorothy Lange
 (Register of Deeds)

By: _____ Deputy

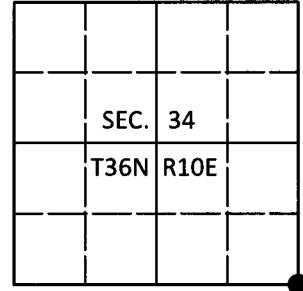
3610 34000

U.S. PUBLIC LAND SURVEY MONUMENT RECORD

Note: This form is intended and designed to fulfill all requirements of Wisconsin Administrative Code, Chapter A-E 7.08 U.S. Public Land Survey Monument Record (3)(a-i).

(a) CORNER LOCATION
 Cor. of Secs. 2, 3, 34 & 35
 Township 35 & 36 North
 Range 10 East of the 4th P.M.
 Town of Monico and Schoepke
 County of Oneida

WISCORS - Oneida County
 N: 134,319.13 USft
 E: 314,171.81 USft
 Datum: NAD 83(2011)
 GNSS Method: RTN - Offset
 GNSS Control: WISCORS VRS



(b) HISTORY OF ORIGINAL CORNER ESTABLISHMENT

Original Surveyor: _____ Original Accessories: _____
 Date of Survey Commenced: _____ See previous USPLS Monument Record
 Completed: _____

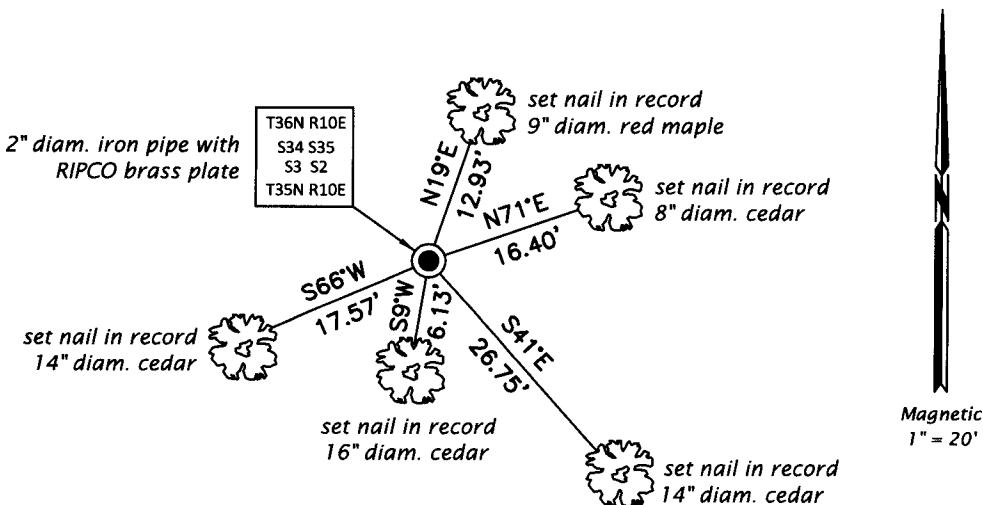
(b)(f)(g)(h) Description of monument found at this corner and if it was accepted, state all evidence (material, testimonial, occupational, plats, records, other monuments) used as a basis for accepting. If not accepted or if nothing was found, state evidence used as basis for establishing location. If re-established through lost corner proportionate methods, indicate all monuments, distances and directions used to establish. Indicate type of monument and sign post found or set.

This is a perpetuation of a previous USPLS Monument Record by Philip T. Hansen, RLS dated September 25, 1978 and filed in the office of the Oneida County Register of Deeds. A complete history of the corner can be found on the previous monument record. I accept the previous location as a true and faithful perpetuation or reestablishment of the original corner location and further perpetuate it as follows.

July 22, 2018: I found and accepted the record monument, a 2" diam. iron pipe with a 3" sq. RIPCO brass plate projecting 28" above the bog surface. I found or established accessories as shown below. I found a white vinyl sign post bearing North, 1 ft.

The coordinate value shown has been verified by at least one of the following methods: 1) comparison to a previously GPS determined published value; 2) the value is the average of two or more GPS observations at a markedly different time; 3) one or more distances were measured back to the GPS observed corner from temporary GPS observed offset locations.

(c)(d)(e) Plan view of corner with ties to at least 4 witness monuments. If in disagreement with previously established corner, show the distances between the two corners and also indicate the ties to the disputed.



REGISTER OF DEEDS OFFICE
 ONEIDA COUNTY
 FILED

AUG 16 2018

KYLE J. FRANSON
 REGISTER OF DEEDS

(i) I, Jeffrey W. Austin, Professional Land Surveyor No. S-1885, hereby certify that the corner location on this record was determined by me or under my direction and control and that this U.S. Public Land Survey Monument Record is correct and complete to the best of my knowledge and belief.

[Handwritten Signature]
 Signature

AUG. 8, 2018
 Date