

CERTIFIED LAND CORNER RESTORATION

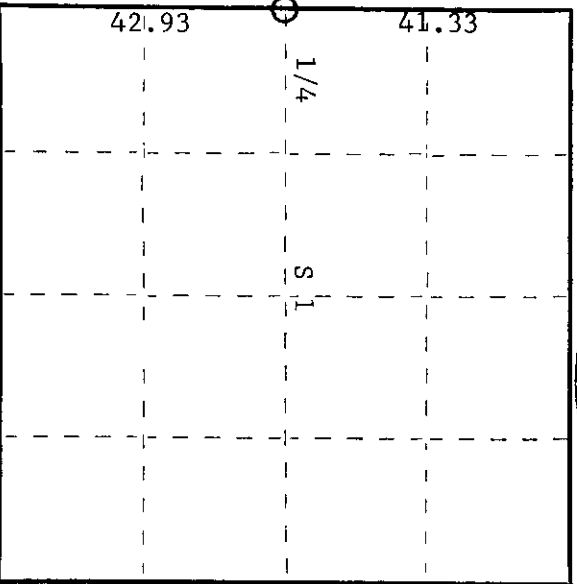
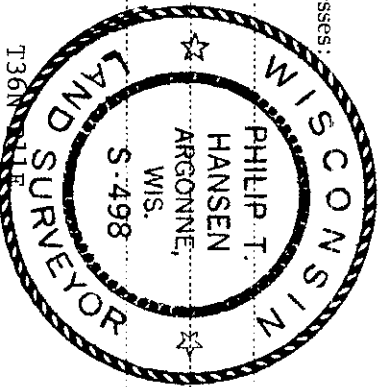
Index No. **C-21**

State of Wisconsin

County of Oneida } ss.

I Philip T. Hansen, do hereby certify that on the 6th day of December, 1974, I found evidence of the 1/4 1 and 2 corner of Township 11 E, Range 36, North, Range 11 E, Fourth Principal Meridian, as described hereon; and that from this evidence I established a new monument and accessories as described hereon to perpetuate the original location of this corner.

Resident witnesses:



○ = Corner monument restored.

History of original corner establishment:

Original corner established by B.F. Dorr's survey in 1898.
 Elm 8" N76 3/4 E 31-1/4 links
 Elm 14" N58W 2-3/4 links

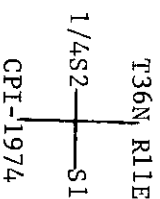
H.C. Lawrence recovered old point of Dorr's stake. Set new 4" hemlock stake in old post hole. Made new BT's - Sugar maple 14" N28W 11 1/2 links
 Sugar maple 15" S55E 46 1/2 links

Description of corner evidence found:
 Recovered 4" hemlock post, scribed S1-1/4 S2-1/4 in poor condition. Also 1" iron pipe found 2' west of hemlock post. This found to be true location from BT's. Found tip of hemlock post while digging hole for new post.

Elm 20"	N76 3/4 E	31-1/2 links
Sugar maple 15"	S55E	46-1/2 links
Sugar maple 14"	N28W	11-1/2 links (stump)
Elm stump	N58W	2-3/4 links (very rotten)

Description of monument and accessories I established to perpetuate the original location of this corner.
 Set 2-1/2" x 5' galvanized iron pipe with brass cap projects 2-1/2 above ground.
 Stamped as follows -

New BT - Sugar maple 15" S40W 23 1/2 links



Dated at Rhinelander, Wis., this 30th day of December, 1974.

Signature: *Philip T. Hansen* Title: Registered Land Surveyor Registration No. S-498
 County Surveyor, Registered Land Surveyor, or other duly authorized official)

Office of Register of Deeds, County of Oneida
 Instrument was filed in this office for record on the 1st day of October, 1975 at 3:00 o'clock P.M.

Dorrie Verage Tuerlin
 (Register of Deeds)

By: Deputy

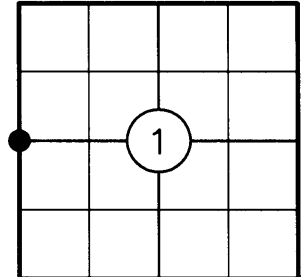
3611022000

U.S. PUBLIC LAND SURVEY MONUMENT RECORD

NOTE: THIS FORM IS INTENDED AND DESIGNED TO FULFILL ALL REQUIREMENTS OF WISCONSIN ADMINISTRATIVE CODE CHAPTER A-E 7.08 U.S. PUBLIC LAND SURVEY MONUMENT RECORD (3) (a)(b)(c)(d)(e)(f)(g)(h)(i). AN ADDITIONAL SHEET MAY BE ADDED IF NECESSARY TO CONFIRM WITH SAID REQUIREMENTS.

(a) CORNER LOCATION:

W1/4 CORNER OF SECTION 1
 TOWNSHIP 36 NORTH
 RANGE 11 EAST
 TOWN OF MONICO
 COUNTY OF ONEIDA



(b) HISTORY OF ORIGINAL CORNER:

ORIGINAL SURVEYOR: WILLIAM E. DOUGHERTY
 DATE OF SURVEY: COMMENCED JULY, 1859
 COMPLETED AUGUST, 1859

ORIGINAL BEARING TREES: 14" W. PINE - S50°W, 7 LKS.
 15" BIRCH - N23E, 13 LKS.

(f)(g)(h) DESCRIPTION OF MONUMENT FOUND AT THIS CORNER AND IF IT WAS ACCEPTED STATE ALL EVIDENCE (MATERIAL, TESTIMONIAL, OCCUPATIONAL, PLATS, RECORDS, OTHER MONUMENTS) USED AS A BASIS FOR ESTABLISHING LOCATION. IF REESTABLISHING THROUGH LOST CORNER PROPORTIONATE METHODS, INDICATE ALL MONUMENTS, DISTANCES, AND DIRECTIONS USED TO ESTABLISH. INDICATE TYPE OF MONUMENT AND SIGN POST FOUND OR SET.

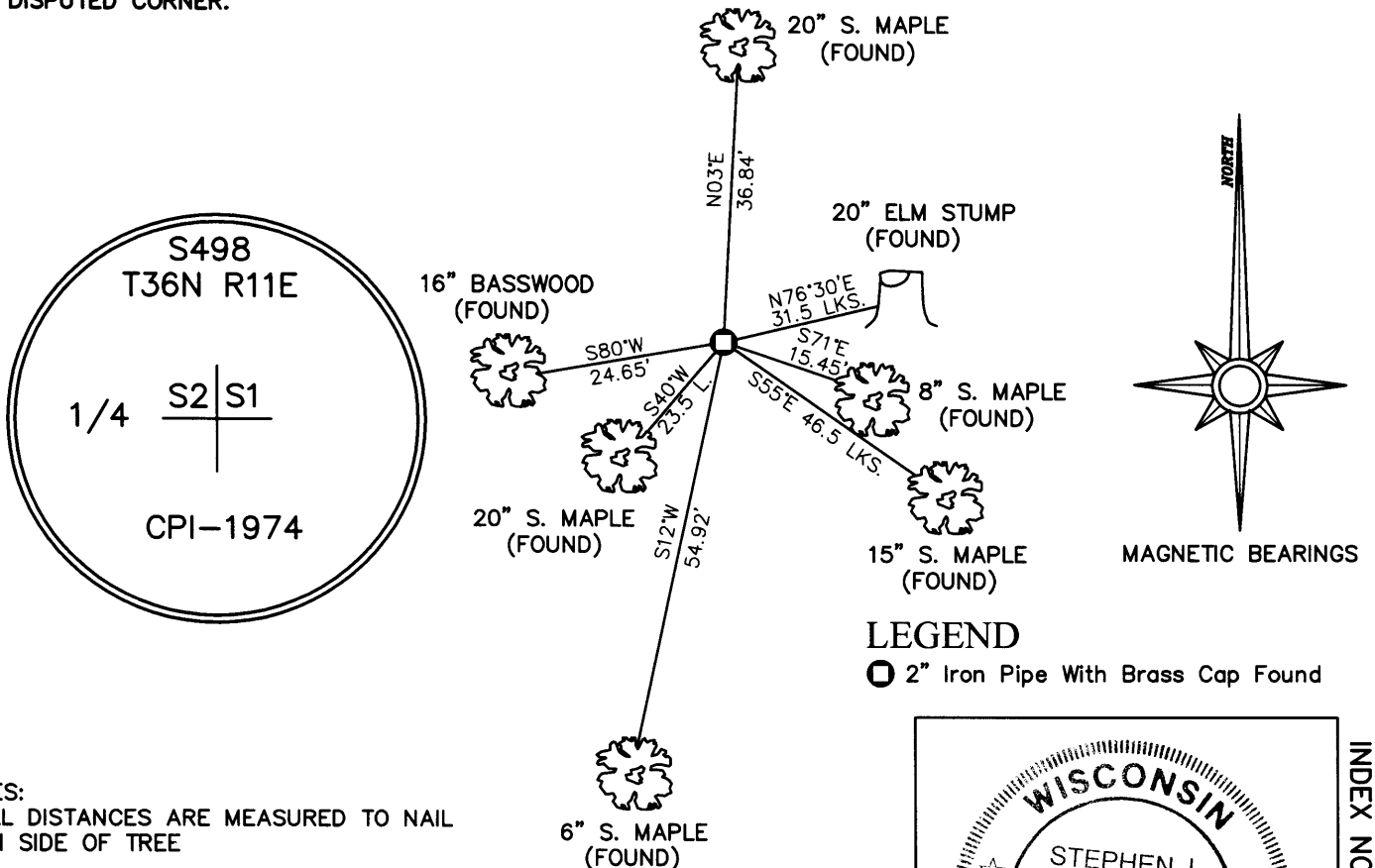
1898: B.F. DORR, COUNTY SURVEYOR, SET A WOOD POST AND MADE BT'S.

1950'S: H.C. LAWRENCE RECOVERED THE POINT OF DORR'S WOOD POST AND HIS BT'S. HE SET A NEW SCRIBED WOOD POST AND MADE TWO NEW BT'S.

1974: PHILIP T. HANSEN FOUND LAWRENCE'S WOOD POST AND BOTH DORR AND LAWRENCE'S BT'S. HE SET A 2-1/2" DIA. IRON PIPE WITH BRASS CAP IN PLACE OF THE WOOD POST AND MADE ONE NEW BT.

2005: I FOUND HANSEN'S MONUMENT IN GOOD CONDITION. I MADE TIES AS SHOW BELOW AND SET A CARSONITE POST 1' WEST.

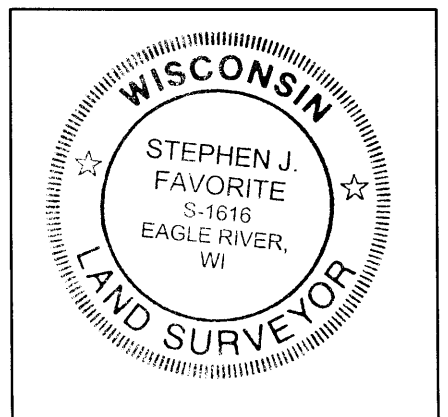
(c)(d)(e) PLAN VIEW OF CORNER WITH TIES TO AT LEAST FOUR WITNESSES. IF IN DISAGREEMENT WITH PREVIOUSLY ESTABLISHED CORNER, SHOW THE DISTANCES BETWEEN THE TWO CORNERS AND ALSO INDICATE THE TIE TO THE DISPUTED CORNER.



NOTES:
 1) ALL DISTANCES ARE MEASURED TO NAIL ON SIDE OF TREE
 2) NOT TO SCALE

I STEPHEN J. FAVORITE, REGISTERED LAND SURVEYOR NO. 1616, HEREBY CERTIFY THAT THE CORNER LOCATION ON THIS RECORD WAS REFERENCED BY ME OR UNDER MY DIRECTION AND CONTROL AND THAT THIS U.S. PUBLIC LAND SURVEY MONUMENT RECORD IS COMPLETE TO THE BEST OF MY KNOWLEDGE AND BELIEF.

Stephen J. Favorite
 SIGNATURE DATE 10-20-05



INDEX NO. C 21

361102 2000