

CERTIFIED LAND CORNER RESTORATION

Index No. **E-14**

State of Wisconsin

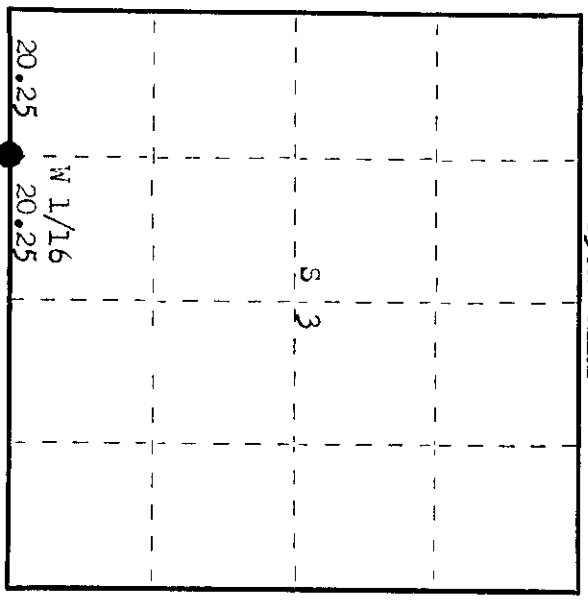
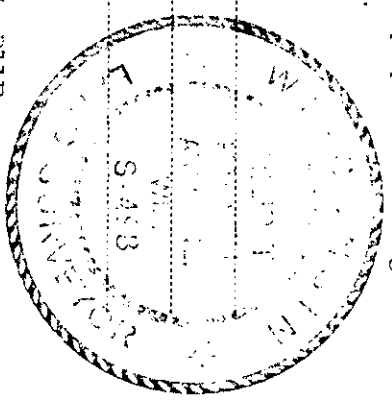
County of Oneida } ss.

I, Phillip T. Hansen, do hereby certify that on the 5th day of May, 1976, I found evidence of the W 1/16 corner of Section 3 and 10 Township 36, North, Range 11 East, Fourth Principal Meridian, as described hereon; and that from this evidence I established a new monument and accessories as described hereon to perpetuate the original location of this corner.

Resident witnesses:

Jim Claffin

Herb Jagoner



○ = Corner monument restored.

History of original corner establishment: Corner established by H.C. Lawrence, Registered Land Surveyor, in 1952. From recovered and restored 1/4 corner he ran west (mag.) 40.50 chains at which point section corner was north at right angles 74 lks. Corrected bearing N88° 57' W.
Set a 4" cedar post for W 1/16, intermediate on true line, 37 lks north.
Marked MBTs - Y. Birch 24" 34.93', 36 lks. Y. Birch 6" N22° E 21 lks, grey boulder 2' diameter x 18" high, N15° W 14½ lks.

Description of corner evidence found: Recovered 4" squared cedar post, scribed N 1/16 S3, " 1/16 S10
Recovered OBTs - Y. Birch 24" (27") 34.93' 36.0 lks, scribed W 1/16 S10 BT.
Y. Birch 6" (7") N22° E 21.0 lks, scribed W 1/16 S3 BT.

Description of monument and accessories I established to perpetuate the original location of this corner.
Replaced cedar post with 1" iron pipe with 2" brass cap, stamped.
Monument projects 20" above ground.
MBTs - Maple 7" N40° E 27.2 lks, scribed 1/16 BT.
Sugar 6" N28° N 14.7 lks, scribed 1/16 BT.
Monument and BTs painted blue.

3498
T36N .11E
" 1/16 S 3/10
CPI-1976

Dated at Rainelander, Wis., this 20th day of May, 1976

Signature Phillip T. Hansen Title Registered Land Surveyor Registration No. 2-498
(County Surveyor, Registered Land Surveyor, or other duly authorized official)

Office of Register of Deeds, County of Oneida.
Instrument was filed in this office for record on the 12th day of May, 1976.
at 9:30 o'clock A.M.

George Krasin
(Register of Deeds)

By: _____ Deputy

36110300