

CERTIFIED LAND CORNER RESTORATION

Index No. **G-15**

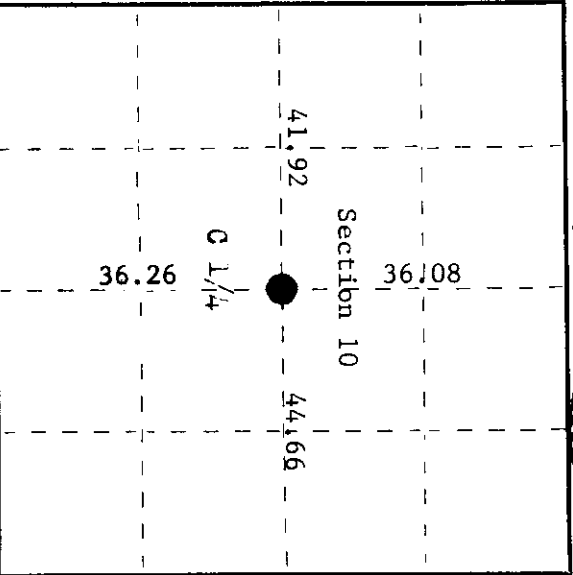
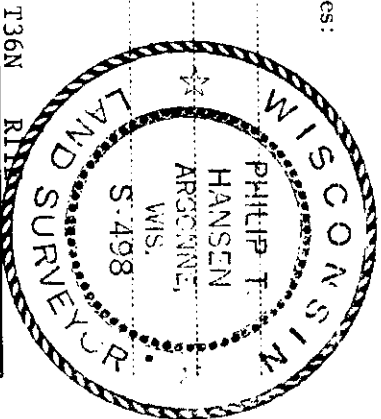
State of Wisconsin

ss.

County of Oneida

I Philip T. Hansen, do hereby certify that on the 3rd day of December, 1974, I found evidence of the center 1/4 corner of Section 10, Township 36 North, Range R11 East, Fourth Principal Meridian, as described hereon; and that from this evidence I established a new monument and accessories as described hereon to perpetuate the original location of this corner.

Resident witnesses:



○ = Corner monument restored.

History of original corner establishment:

This corner established by H.C. Lawrence in 1952 at intersection of N-S quarter line and E-W quarter line, which he ran and corrected from existing and restored quarter corners. No records of previous subdivisions.

B.T. Aspen 9" S5W 21½ links  
Maple 5" N40E 19½ links

Description of corner evidence found:

Recovered 4" cedar post, scribed C-1/4 S10 in good condition. Recovered old bearing trees.

Aspen 10" S5W 21½ links (stump)  
Red maple 7" N40E 17½ links

Description of monument and accessories I established to perpetuate the original location of this corner.  
Set 2-1/2" x 5' galvanized iron pipe with brass cap stamped as follows:

New B.T. blazed and scribed.

Red maple 6" S62W 18 links  
S498  
T36N R11E

C-1/4 + S10  
CPI-1974

Dated at Rhinelander, Wis. this 3rd day of December, 1974

Signature: *Philip T. Hansen* Title: Registered Land Surveyor Registration No. S-498  
(County Surveyor, Registered Land Surveyor, or other duly authorized official)

Office of Registrar of Deeds, County of Oneida  
Instrument was filed in this office for record on the 1st day of October, 1975  
at 3:00 o'clock P.M.

*Lorrie Verge Kuehn*  
(Registrar of Deeds)

By: \_\_\_\_\_ Deputy

361102020