

CERTIFIED LAND CORNER RESTORATION

Index No. G-25

State of Wisconsin

ss.

County of Oneida

I Phillip T. Hansen do hereby

certify that on the 5th day

of December 19 74, I found

evidence of the East 1/4 corner

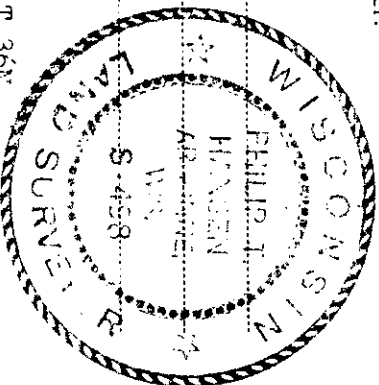
corner of Section 12

Township 36, North, Range

11 East, Fourth, Principal Meridian,

as described hereon; and that from this evidence I established a new monument and accessories as described hereon to perpetuate the original location of this corner.

Resident witnesses:



History of original corner establishment:  
 Original corner established by William E. Dougherty, Gov. Deputy Surveyor in 1859

Y. Birch	12"	East	23 lks
Y. Birch	12"	N35W	21 lks

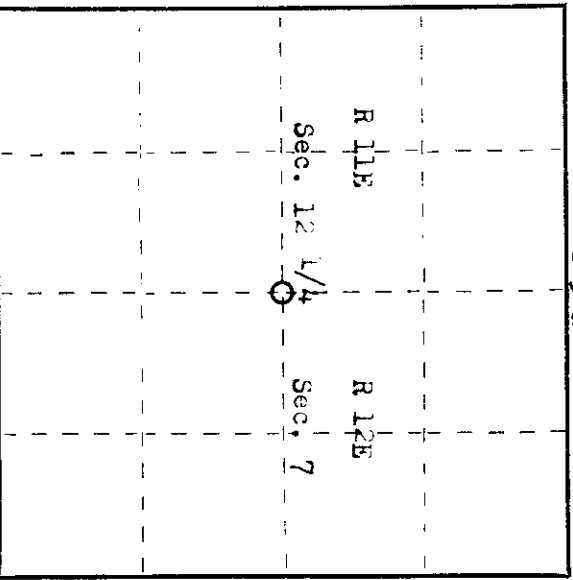
Description of corner evidence found: H. J. Lawrence retracement survey of 1/50 stated that he recovered an old post and original Y. Birch ST. He set a new 4" cedar post, scribed and blazed a sugar maple 10" S30, and 20 1/2 lks. Also a Basswood 16" S30E 43 1/2 lks. recovered the old and new post and the bearing trees described above in fair condition.

Description of monument and accessories I established to perpetuate the original location of this corner.  
 Set a 2 1/2" x 5' galvanized iron pipe with a brass cap stamped as follows.

Blazed and scribed new bearing tree

Sugar maple	6"	N60W	23 lks	S 698
Sugar maple	14"	S30W	20 1/2 lks	T 36N

R 11 E R 12E  
 1/4 S12 + S 7  
 CPI 1974



○ = Corner monument restored.

Dated at Rhinelander, Wis., this 17th day of December, 19 74

Signature: Phillip T. Hansen Title: Registered Land Surveyor Registration No. 9 498  
 County Surveyor, Registered Land Surveyor, or other duly authorized official

Office of Register of Deeds, County of Oneida  
 Instrument was filed in this office for record on the 1st day of October, 19 75  
 at 3:00 o'clock PM, NI. I hereby certify that the within

Doris Savage Kuehn  
 (Register of Deeds)

By \_\_\_\_\_ Deputy

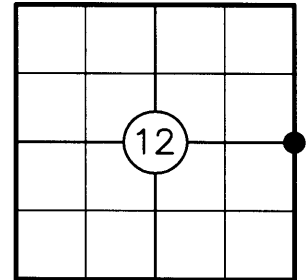
361122000

# U.S. PUBLIC LAND SURVEY MONUMENT RECORD

NOTE: THIS FORM IS INTENDED AND DESIGNED TO FULFILL ALL REQUIREMENTS OF WISCONSIN ADMINISTRATIVE CODE CHAPTER A-E 7.08 U.S. PUBLIC LAND SURVEY MONUMENT RECORD (3) (a)(b)(c)(d)(e)(f)(g)(h)(i). AN ADDITIONAL SHEET MAY BE ADDED IF NECESSARY TO CONFIRM WITH SAID REQUIREMENTS.

**(a) CORNER LOCATION:**

E1/4 CORNER OF SECTION 12  
 TOWNSHIP 36 NORTH  
 RANGE 11 EAST  
 TOWN OF MONICO  
 COUNTY OF ONEIDA



**(b) HISTORY OF ORIGINAL CORNER:**

ORIGINAL SURVEYOR: WILLIAM E. DAUGHERTY  
 DATE OF SURVEY: COMMENCED JULY, 1859  
 COMPLETED AUGUST, 1859

ORIGINAL BEARING TREES: 12" Y. BIRCH - EAST, 23 LKS.  
 12" Y. BIRCH - N85°W, 21 LKS.

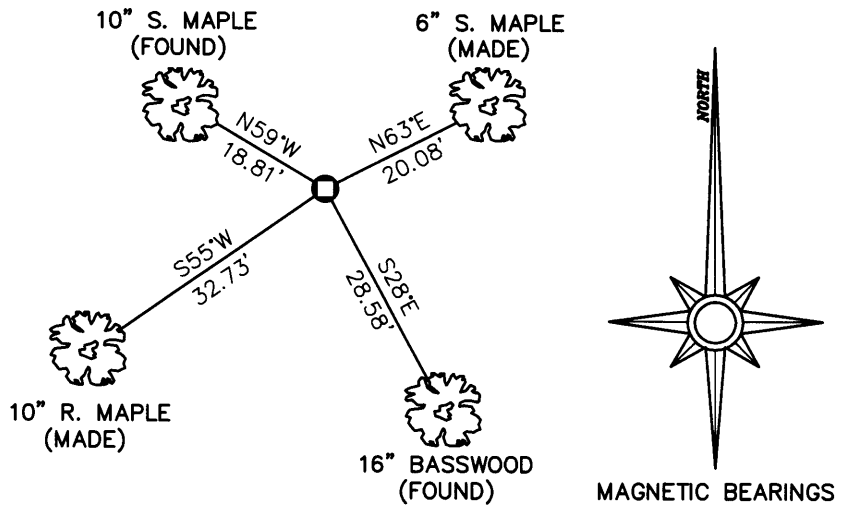
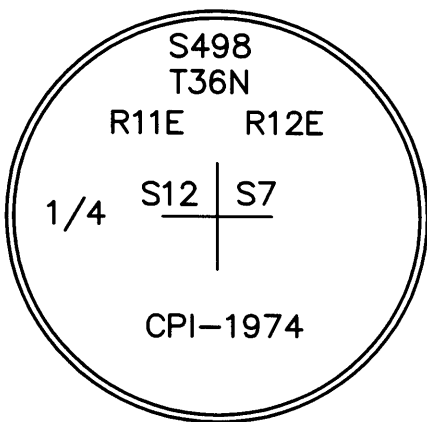
**(f)(g)(h) DESCRIPTION OF MONUMENT FOUND AT THIS CORNER AND IF IT WAS ACCEPTED STATE ALL EVIDENCE (MATERIAL, TESTIMONIAL, OCCUPATIONAL, PLATS, RECORDS, OTHER MONUMENTS) USED AS A BASIS FOR ESTABLISHING LOCATION. IF REESTABLISHING THROUGH LOST CORNER PROPORTIONATE METHODS, INDICATE ALL MONUMENTS, DISTANCES, AND DIRECTIONS USED TO ESTABLISH. INDICATE TYPE OF MONUMENT AND SIGN POST FOUND OR SET.**

1950'S: H.C. LAWRENCE RECOVERED AN OLD WOOD POST AND AN ORIGINAL Y. BIRCH BT. HE SET A 4" X 4" CEDAR POST AND MADE NEW BT'S.

1974: PHILIP T. HANSEN FOUND LAWRENCE'S WOOD POST AND BT'S. HE SET A 2-1/2" DIA. IRON PIPE WITH BRASS CAP IN PLACE OF THE WOOD POST AND MADE NEW BT'S.

2005: I FOUND HANSEN'S MONUMENT AND BT'S IN GOOD CONDITION. I MADE NEW TIES AS SHOW BELOW AND SET A CARSONITE POST 1' WEST.

**(c)(d)(e) PLAN VIEW OF CORNER WITH TIES TO AT LEAST FOUR WITNESSES. IF IN DISAGREEMENT WITH PREVIOUSLY ESTABLISHED CORNER, SHOW THE DISTANCES BETWEEN THE TWO CORNERS AND ALSO INDICATE THE TIE TO THE DISPUTED CORNER.**



**LEGEND**

◻ 2" Iron Pipe With Brass Cap Found

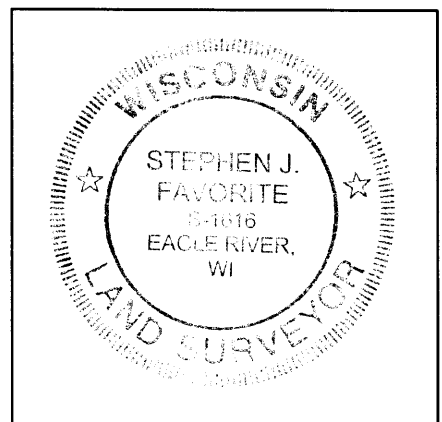
**NOTES:**

- 1) ALL DISTANCES ARE MEASURED TO NAIL ON SIDE OF TREE
- 2) NOT TO SCALE

I STEPHEN J. FAVORITE, REGISTERED LAND SURVEYOR NO. 1616, HEREBY CERTIFY THAT THE CORNER LOCATION ON THIS RECORD WAS REFERENCED BY ME OR UNDER MY DIRECTION AND CONTROL AND THAT THIS U.S. PUBLIC LAND SURVEY MONUMENT RECORD IS COMPLETE TO THE BEST OF MY KNOWLEDGE AND BELIEF.

*Stephen J. Favorite*  
 SIGNATURE

12-27-05  
 DATE



INDEX NO. G 25

3611122000