

CERTIFIED LAND CORNER RESTORATION

Index No. **R-11**

State of Wisconsin

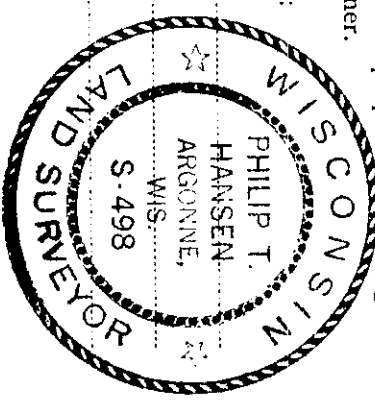
County of Oneida } ss.

I Philip T. Hansen, do hereby certify that on the 2nd day of April, 1975, I found evidence of the Quarter corner of the Sections 21 & 28

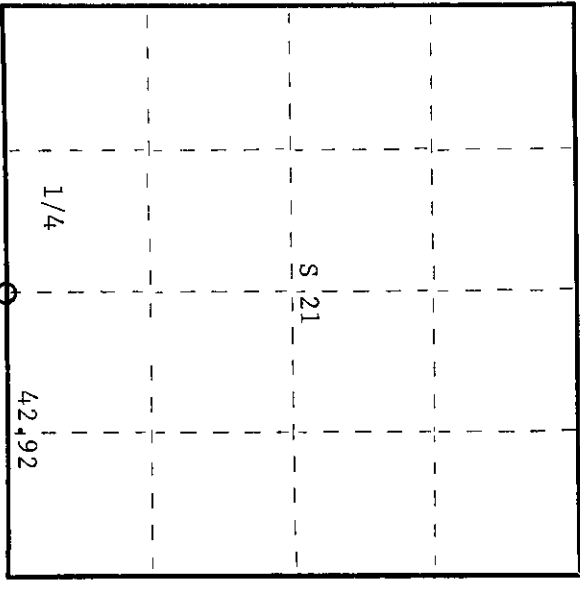
Township 36, North, Range 11 East, Fourth Principal Meridian,

as described hereon; and that from this evidence I established a new monument and accessories as described hereon to perpetuate the original location of this corner.

Resident witnesses:



T36N R11E



○ = Corner monument restored.

History of original corner establishment:

Original corner established by Wm. E. Dougherty, Gov. Deputy Surveyor, in 1859, from which maple 6" S45°E bears 11 links, fir 7" bears N120°W 23 links. B.F. Dorr, County Surveyor, recovered this corner in 1906. Set post, from which maple 8" bears S65°E 11½ links, hemlock 14" bears N41½°W 44 links. Corner restored by H.C. Lawrence in 1947. Maple 8" S65°E 11½ links was gone. Recovered hemlock 14" N41½°W 44 links intact, and recovered remains of his corner post. Set new post, from which elm 18" bears N56°W 86 links and white birch 9" bears N10°W 70½ links.

Description of corner evidence found:

Recovered 4" cedar post, squared and scribed ¼S S21, ¼S S28, in poor condition. Post was stuck inside an iron hub with 3" x 9" shaft protruding, which was frozen in the ground, making it difficult to remove. Around the hub a rock carron was found and someone's old wooden post was recovered beside it. Recovered elm 18" N56°W 86 links, scribing grown over but in good condition. 9" birch N10°W 70½ links, dead and broken off 6' above the ground, scribed NBT. No trace found of 14" hemlock.

Description of monument and accessories I established to perpetuate the original location of this corner. Set new 2½" x 5' galvanized iron pipe with brass cap in old hole, stamped -

NBT's - white birch 8" S34°E 56.4 links, scribed ¼ BT.

T36N R11E  
1/4 S/21  
S/28

CPI-1975

Dated at Rhineland, Wis., this 19th day of August, 1975.

Signature Philip T. Hansen Title Registered Land Surveyor Registration No. S-498  
(County Surveyor, Registered Land Surveyor, or other duly authorized official)

Office of Register of Deeds, County of Oneida  
Instrument was filed in this office for record on the 1st day of October, 1975  
at 3:00 o'clock P. M.

Doris Verage Fuchs  
(Register of Deeds)

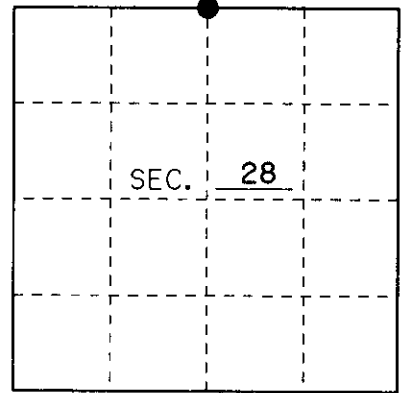
By: \_\_\_\_\_ Deputy

2611210020

# U.S. PUBLIC LAND SURVEY MONUMENT RECORD

Note: This form is intended and designed to fulfill all requirements of Wisconsin Administrative Code, Chapter A-E 7.08 U.S. Public Land Monument Record (3)(a)(b)(c)(d)(e)(f)(g)(h)(i). An additional sheet may be added if necessary to conform with said requirements.

(a) CORNER LOCATION: NORTH LINE County or State Plane Coordinates  
N1/4 Corner of Section 28 Northing \_\_\_\_\_  
 Township 36 North Easting \_\_\_\_\_  
 Range 11 East Datum Base \_\_\_\_\_  
 Township/City MONICO County of ONEIDA



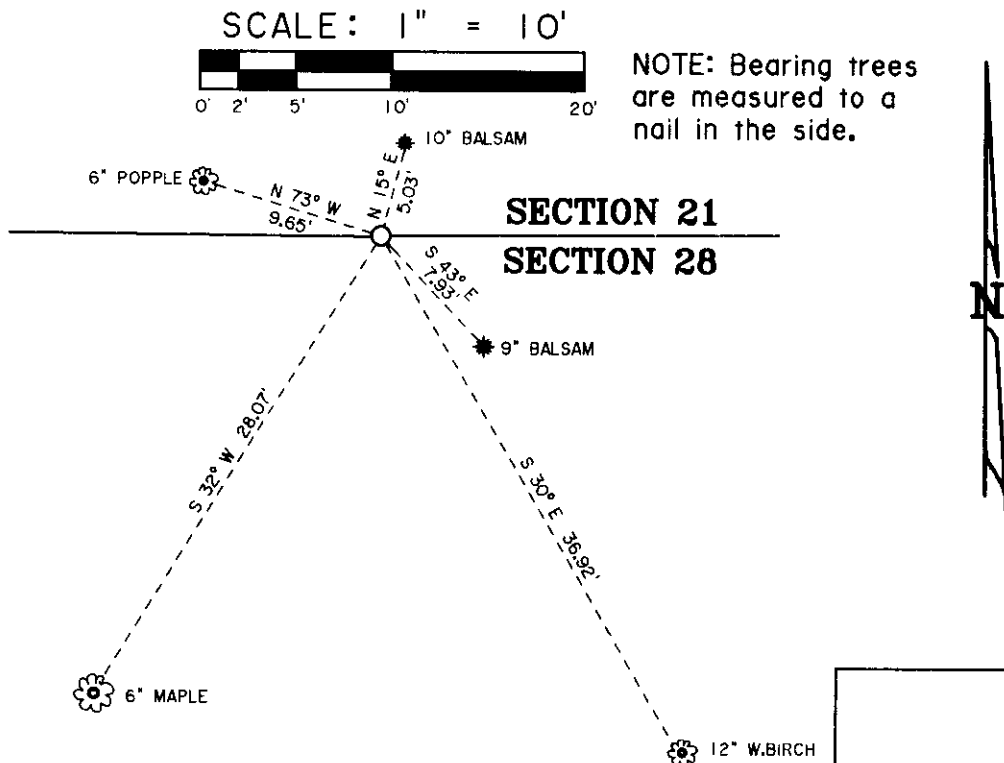
(b) HISTORY OF ORIGINAL CORNER ESTABLISHMENT Original B.T.'s  
 Original Surveyor: WILLIAM E. DAUGHTERY 6" MAPLE S 45°E 11 Lks.  
 Date of Survey: OCTOBER 1859 7" FUR N 12°W 23 Lks.

(b)(f)(g)(h) Description of monument found at this corner and if it was accepted, state all evidence (material, testimonial, occupational, plats, records, other monuments) used as a basis for accepting. If not accepted or if nothing was found, state evidence used as basis for establishing location. If reestablished through lost corner proportionate methods, indicate all monuments, distances and directions used to establish. Indicate type of monument and sign post found or set.

OCT/1859: WILLIAM DAUGHTERY SET N 1/4 CORNER WITH A WOOD POST.

8/16/99: I, MICHAEL E. WEBER, FOUND ONEIDA COUNTY 2" IRON PIPE BRASS CAP 2' ABOVE THE GROUND SET BY CONSOLIDATED PAPER COMPANY IN 1975 BY SURVEYOR #498. I ALSO FOUND ONE BEARING TREE A 12" WHITE BIRCH S 30° E 36.92'. I ALSO MADE FOUR NEW BEARING TREES AS SHOWN BELOW, AND SET A PLASTIC SIGN POST 1' NORTHEAST.

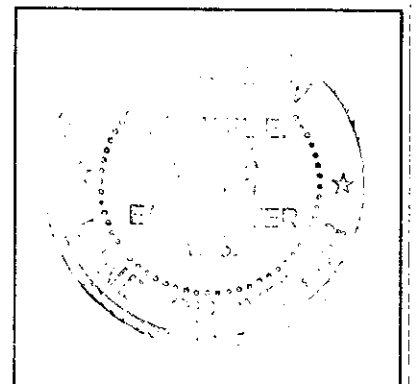
(c)(d)(e) Plan view of the corner with ties to at least 4 witness monuments. If in disagreement with previously established corner, show the distances between the two corners and also indicate the ties to the disputed.



NOTE: Bearing trees are measured to a nail in the side.

(i) I, Michael E. Weber R.L.S. No. 2070  
 hereby certify that the corner location on this record was determined by me or under my direction and control and that this U.S. Public Land Survey Monument Record is correct and complete to the best of my knowledge and belief.

Signature Michael E Weber Date 10-7-99



Index No. R - 11

3611210020