

CERTIFIED LAND CORNER RESTORATION

Index No. S-13

State of Wisconsin }  
 County of Cneida } ss.

I, Phillip T. Hansen, do hereby  
 certify that on the 17th day  
 of March, 1976, I found

evidence of the N 1/16  
 corner of Sections 27 and 28  
36, North, Range

11 East, Fourth Principal Meridian,  
 as described hereon; and that from this evidence  
 I established a new monument and accessories  
 as described hereon to perpetuate the original  
 location of this corner.

Resident witnesses:

Glen Barker

Jim Clafflin

Herb Wagoner

History of original corner establishment:

H.C. Lawrence, Registered Land Surveyor, recovered an old post in 1948, of unknown origin.  
 Also an old pine windfall, 16" bearing S24°W 10 links with scribe marks.  
 Set new 5" cedar post along side of old post.  
 Marked NBT - Tamarack stub 9" 10 ft. high N65°W 93 links.

Description of corner evidence found:

Recovered 5" cedar post, squared and scribed N 1/16 S27, N 1/16 S28 in poor condition.  
 Recovered tamarack stub 9" - 10" high, scribed N 1/16 S28 E N65°W 93 links.

Description of monument and accessories I established to perpetuate the original location of this corner.  
 Replaced 5" cedar post with 1" iron pipe with 2" brass cap, stamped:

Monument projects 1" above ground. S49°  
 Marked NPT - Cedar 7" N52°W 64.4 links N 1/16 28 + 27  
 B. Spruce 6" S10°E 31.5 links  
 both scribed 1/16 RT. CTI - 1976

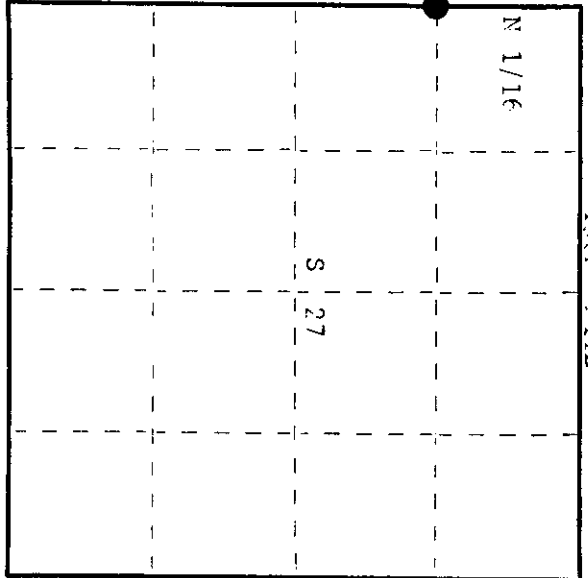
Dated at Phineland, Wis., this 3rd day of December, 1979

Signature Phillip T. Hansen Title Registered Land Surveyor Registration No. S-498  
 (County Surveyor, Registered Land Surveyor, or other duly authorized official)

Office of Register of Deeds, County of Cneida  
 Instrument was filed in this office for record on the 17th day of December, 1979  
 at 1:30 o'clock P. M. I hereby certify that the within

Louis George Fischer  
 (Register of Deeds)

By: \_\_\_\_\_ Deputy



○ = Corner monument restored.

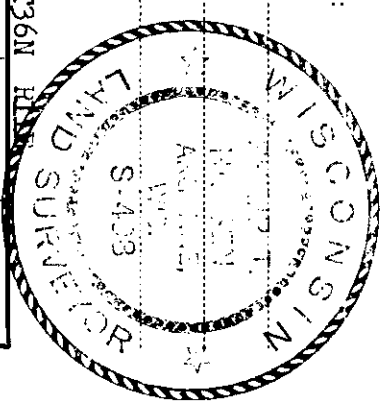
361128300

State of Wisconsin }  
 County of Oneida } ss.

I Philip F. Hansen, do hereby certify that on the 17th day of March, 1976, I found evidence of the N 1/16 corner of Section 27 and 28 Township 36, North, Range 11 East, Fourth Principal Meridian, as described hereon; and that from this evidence I established a new monument and accessories as described hereon to perpetuate the original location of this corner.

Resident witnesses:

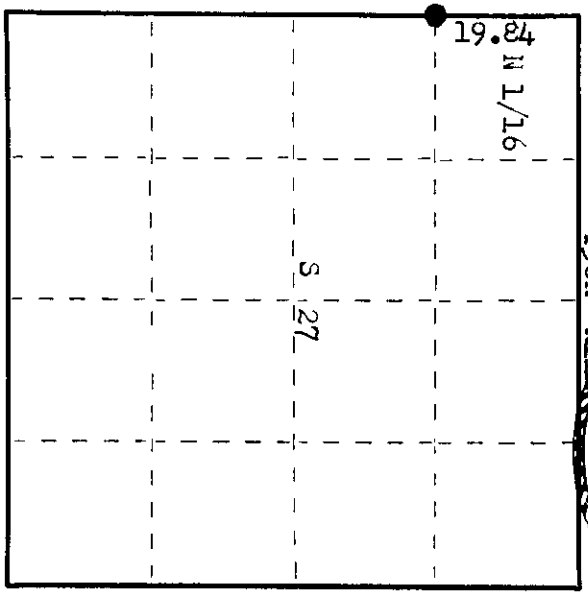
Glen Barker  
Jim Clafin  
Herb Wagoner



History of original corner establishment:  
 H. C. Lawrence, Registered Land Surveyor, restored this corner in 1949. He ran a random line south from recovered Section Corner S 21, S 22, S 27, S 28, and at 19.84° chains, found an old 1/16 post, 32 lks west. Found an old pine windfall 16" S 24° N 10 lks. Set new 5" Cedar Post and made NRTs, Dead tamarack stub 9" x 10' high, N 65° W 93 lks.

Description of corner evidence found:  
 Recovered 5" Cedar Post, Squared and Scribed N 1/16 S 27, N 1/16 S 28 in poor condition.  
 Recovered Tamarack stub 9" x 10' N 65° W 93 lks, Scribed N 1/16 S 28 BT.

Description of monument and accessories I established to perpetuate the original location of this corner.  
 Replaced 5" Cedar Post with 1" iron pipe, with 2" brass cap stamped  
 Pipe projects 18" above ground. S 498  
 NRTs - Cedar 7" N 52° W 64.4 lks. Scribed 1/16 BT. T36N R11E  
 Black Spruce 6" S 19° E 31.5 lks. Scribed 1/16 BT. S 28 | S 27  
 Pipe, post and RTs painted blue. N 1/16  
1975



○ = Corner monument restored.

Dated at Oneida, Wis., this 22nd day of March, 19 76

Signature: Philip F. Hansen Title Registered Land Surveyor Registration No. S-498  
 (County Surveyor, Registered Land Surveyor, or other duly authorized official)  
 Office of Register of Deeds, County of Oneida  
 at 1:30 o'clock P. M. 5-7-76 day of April, 19 76.  
 I hereby certify that the within instrument was filed in this office for record on the

Louis LePage Richer  
 (Register of Deeds)

By: \_\_\_\_\_ Deputy

800E8211293