

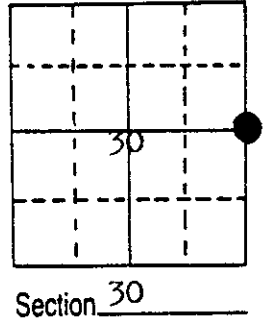
# U.S. PUBLIC LAND SURVEY MONUMENT RECORD

Note: This form is intended and designed to fulfill all requirements of Wisconsin Administrative Code, Chapter A-E 5.02, U.S. Public Land Survey Monument Record (3) (a) (b) (c) (d) (e) (f) (g) (h) (i). An additional sheet may be added if necessary to conform with said requirements.

(a) Corner location: Township 36 North  
 Range 11 East/West

Town/City/Village Monico

County Oneida



Section 30

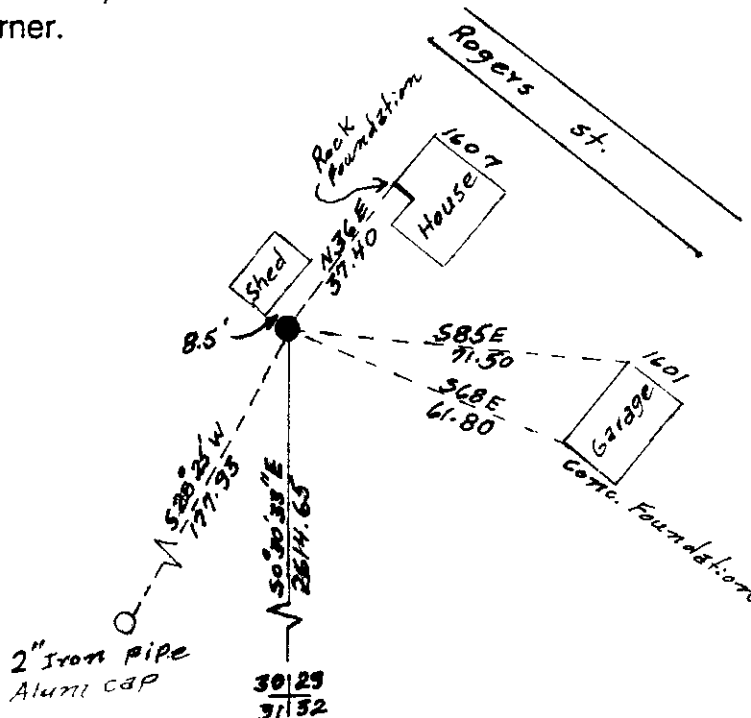
(b) (f) (g) (h) Description of monument found at this corner and if it was accepted, state all evidence (material, testimonial, occupational, plats, records, other monuments) used as a basis for accepting. If not accepted or if nothing was found, state evidence used as basis for establishing location. If reestablished through lost corner proportionate methods, indicate all monuments, distances and directions used to establish.

In 1975 I found a 2" diam. iron pipe in this location as described by B.F. Dorr on his recorded plat of the "Wis. Sulphite Fibre Co." addition to Monico on October 26, 1887. Plat recorded on page 6, Book 2 of plats. The description reads as follows: Quarter post between sec. 29 and 30 is 125 1/2 feet from the Northeast corner of Lot 7 in block 1, measuring on the North line of said lot 7 and 19 inches from said line measuring at right angles Southeasterly and is witnessed by the following bearings. Pine stp. 12" @ 42W, 25 1/3 Links. Pine stp. 12" @ 25 3/4 W, 5 links.

The pipe found was loose and projected 8" above the ground. I reset the pipe flush with the ground and cemented a aluminum plug cap stamped 1/4, S30, S29 on the cap.

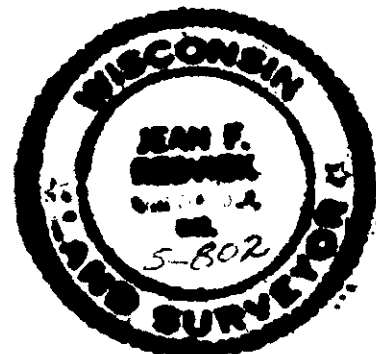
On May 15, 1985 I recovered the 1/4 corner monument and added the witness to the buildings as shown on the sketch below.

(c) (d) (e) Plan view of corner with ties to at least 4 witness monuments. If in disagreement with previously established corner, show the distances between the two corners and also indicate the ties to the disputed corner.



(i) I, Jean F. Resvick  
 (type or print name) certify that the corner location on this record was determined by me or under my direction and control and that this U.S. Public Land Survey Monument Record is correct and complete to the best of my knowledge and belief.

Jean F. Resvick  
 Signature Date 5-15-85



Index No. T-5