

U.S. PUBLIC LAND SURVEY MONUMENT RECORD

This form is intended and designed to fulfill all requirements of Wisconsin Administrative Code, Chapter A-E 7.08 U.S. Public Land Survey Monument Record (3) (a)(b)(c)(d)(e)(f)(g)(h)(i).

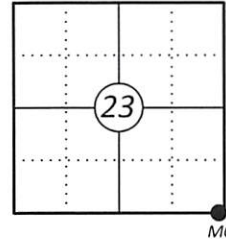
The coordinate value shown has been verified by at least one of the following methods: 1) Comparison to a previously GNSS determined published value; 2) The value is the average of two or more GNSS observations at a markedly different time; 3) One or more distances were measured back to the GNSS observed corner from temporary GNSS observed offset locations.

Oneida County
Land Information Office
Filed
4/13/2026

A-E 7.08(3)(a) Identity of the corner:

Meander Corner, Section 23	WISCRS - Oneida County
Township 38 North	N: 209599.45 USFT
Range 8 East	E: 254586.06 USFT
Town of Newbold	Datum: NAD 83 (2011)
County of Oneida	GNSS Method: WISCRS VRS Direct Observation

Corner ID: 3808230001



Original Corner Information:

Original Surveyor: Alexander Anderson Original B.T.'s: Y. Pine 8" - N27°W, 128 links
Date of Survey: July, 1863 Tamarack 8" - S7°W, 27 links

A-E 7.08(3)(b)(e)(f)(g) Describe any record evidence, monument evidence, occupational evidence, testimonial evidence or any other material evidence considered. Describe any discrepancy between the corner restored and any previously established location. State whether the corners was restored through acceptance of obliterated evidence, a found perpetuated location, or determined by proportionate methods.

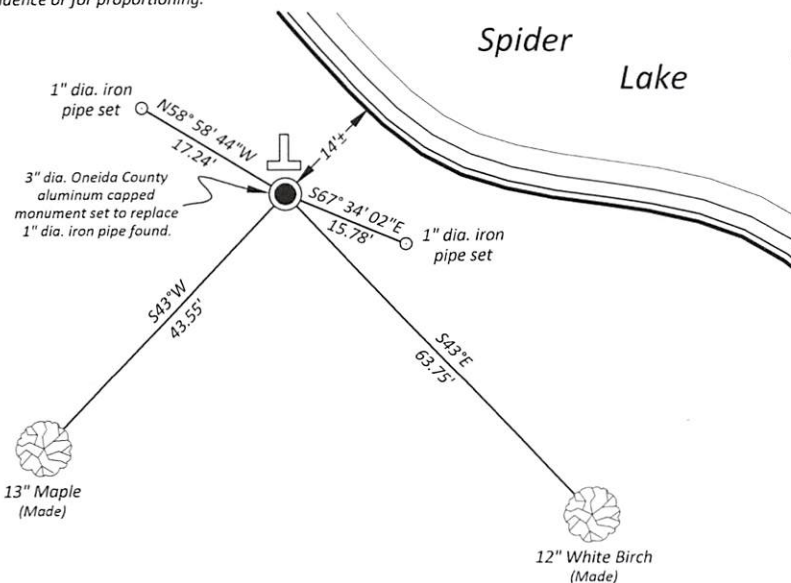
1954 During a survey in Section 23, WDNR surveyors Nelson, McDonald & Mentz show "Orig. MC" along the west shore of Spider Lake, see OCSM No. A379.

09/13/2001 Stuart Foltz shows computed "Meander Corner position based on survey by A. Nelson in 1954", see OCSM No. C1843.

06/18/2004 Russel Brown sets 1" x 18" iron pipe for MC, and references section corner in lake being "computed from Foltz Map C1843", see OCSM No. C2074.

11/20/2025 I found a 1" dia. iron pipe at the corner location near the westerly shoreline of Spider Lake, I replaced the found iron pipe with a 3" dia. Oneida County capped aluminum monument set flush with the ground and stamped to identify the corner. I set two iron pipes and made two bearing trees to witness the corner as shown below.

A-E 7.08(3)(c)(d)(e)(h) Plan view of corner with ties to at least four witnesses. If in disagreement with previously established corner, show the distances between the two corners and also indicate the tie to the disputed corner. Distances and directions to other PLSS used as evidence or for proportioning.



Bearings given to the nearest second are Oneida County Grid all other bearings are magnetic



- * Vinyl "T" past 1.0' north of corner.
- * Distances to bearing trees are to nail in side.
- * Sketch is not to scale

A-E 7.08(3)(i) - Certification

I, Gregory S. Maines, Professional Land Surveyor No. 2729, hereby certify that the corner location on this record was referenced by me or under my direction and control and that this U.S. Public Land Survey Monument Record is complete to the best of my knowledge and belief.
REF: 2025350



Index No.: