

U.S. PUBLIC LAND SURVEY MONUMENT RECORD

Note: This form is intended and designed to fulfill all requirements of the Wisconsin Administrative Code, Chapter A-E 7.08 U.S. Public Land Monument Record (3)(a)(b)(c)(d)(e)(f)(g)(h)(i). An additional sheet may be added if necessary to conform with said requirements.

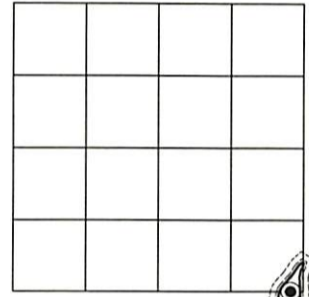
Oneida County
Land Information Office
Filed
5/1/2026

(a) CORNER LOCATION:

Meander Corner South Line of Section 28 North:
Township 39 North East:
Range 11 East Datum: NAD
Town of Three Lakes GNSS Method:
County of Oneida GNSS Control:

(RECORDING AREA)

SECTION 28



(b) HISTORY OF ORIGINAL CORNER ESTABLISHMENT

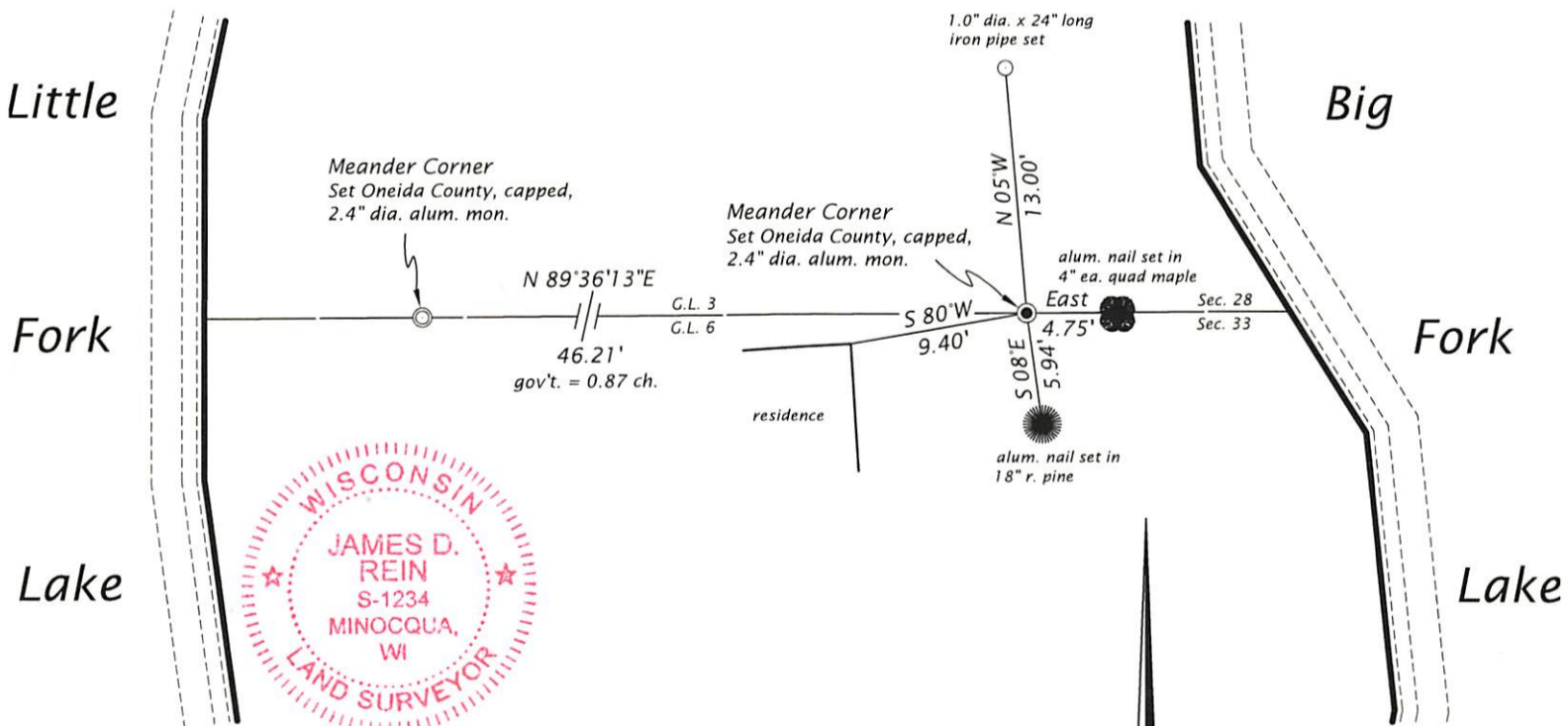
Original Surveyor: William E. Daugherty, Deputy Surveyor
Date of Survey: Commenced Sept. 6, 1859
Completed Sept. 10, 1859
Original B.T.'S Aspen 10", N 46°W, 7 lks
White Pine 10", S 60°W, 23 lks

(f)(g)(h) DESCRIPTION OF MONUMENT FOUND AT THIS CORNER AND IF IT WAS ACCEPTED, STATE ALL EVIDENCE (MATERIAL, TESTIMONIAL, OCCUPATIONAL, PLATS, RECORD, OTHER MONUMENTS) USED AS A BASIS FOR ESTABLISHING LOCATION. IF NOT ACCEPTED OR IF NOTHING WAS FOUND, STATE EVIDENCE USED AS BASIS FOR ESTABLISHING LOCATION. IF REESTABLISHED THROUGH LOST CORNER PROPORTIONATE METHODS, INDICATE ALL MONUMENTS, DISTANCES AND DIRECTIONS USED TO ESTABLISH. INDICATE TYPE OF MONUMENT AND SIGN POST FOUND OR SET.

Date? A. J. Lytle, Oneida County Surveyor, Map of survey filed as L536 (poor quality) shows meander corner with open circle symbol, no dimensions.

February 9, 2026, James D. Rein, PLS No. S-1234, we find no remaining evidence of the corner on the westerly shore of Big Fork Lake, thus I restored it by first re-establishing the corner common to Sections 27, 28, 33 and 34 by single proportionate measurement between the recoverd meander corners to the north and south, and on a line with the recoverd meander corner between Sections 28 and 33 near the westerly shore of Little Fork Lake. We set an Oneida County, capped, 2.4" dia. aluminum monument near the westerly shore and made reference ties as shown in the plan. See the reverse side of this page for the proportionate measurement plan.

(c)(d)(e) PLAN VIEW OF CORNER WITH TIES TO AT LEAST 4 WITNESS MONUMENTS. IF IN DISAGREEMENT WITH PREVIOUSLY ESTABLISHED CORNER, SHOW THE DISTANCE BETWEEN THE TWO CORNERS AND ALSO INDICATE THE TIES TO THE DISPUTED CORNER.



Scale: 1" = 10'

(i) I, JAMES D. REIN, PROFESSIONAL LAND SURVEYOR NO. S-1234 HEREBY CERTIFY THAT THE CORNER LOCATION ON THIS RECORD WAS DETERMINED BY ME OR UNDER MY DIRECTION AND CONTROL AND THAT THIS U.S. PUBLIC LAND SURVEY MONUMENT RECORD IS CORRECT AND COMPLETE TO THE BEST OF MY KNOWLEDGE AND BELIEF.

James D. Rein
SIGNATURE 3/16/26
DATE

INDEX NO. V 12 - 13
3911280001

