

U.S. PUBLIC LAND SURVEY MONUMENT RECORD

Note: This form is intended and designed to fulfill all requirements of the Wisconsin Administrative Code, Chapter A-E 7.08 U.S. Public Land Monument Record (3)(a)(b)(c)(d)(e)(f)(g)(h)(i). An additional sheet may be added if necessary to conform with said requirements.

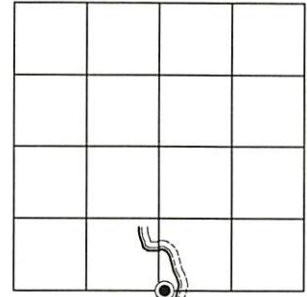
Oneida County
Land Information Office
Filed
5/1/2026

(a) CORNER LOCATION:
West M. C. South Line of Section 28
Township 39 North
Range 11 East
Town of Three Lakes
County of Oneida

WISCRS - Oneida County
North: 233,683.956 USft
East: 338,328.850 USft
Datum: NAD 83(2011) ep. 2010.00
GNSS Method: RTN - Direct
GNSS Control: WISCRS VRS

(RECORDING AREA)

SECTION 28



(b) HISTORY OF ORIGINAL CORNER ESTABLISHMENT

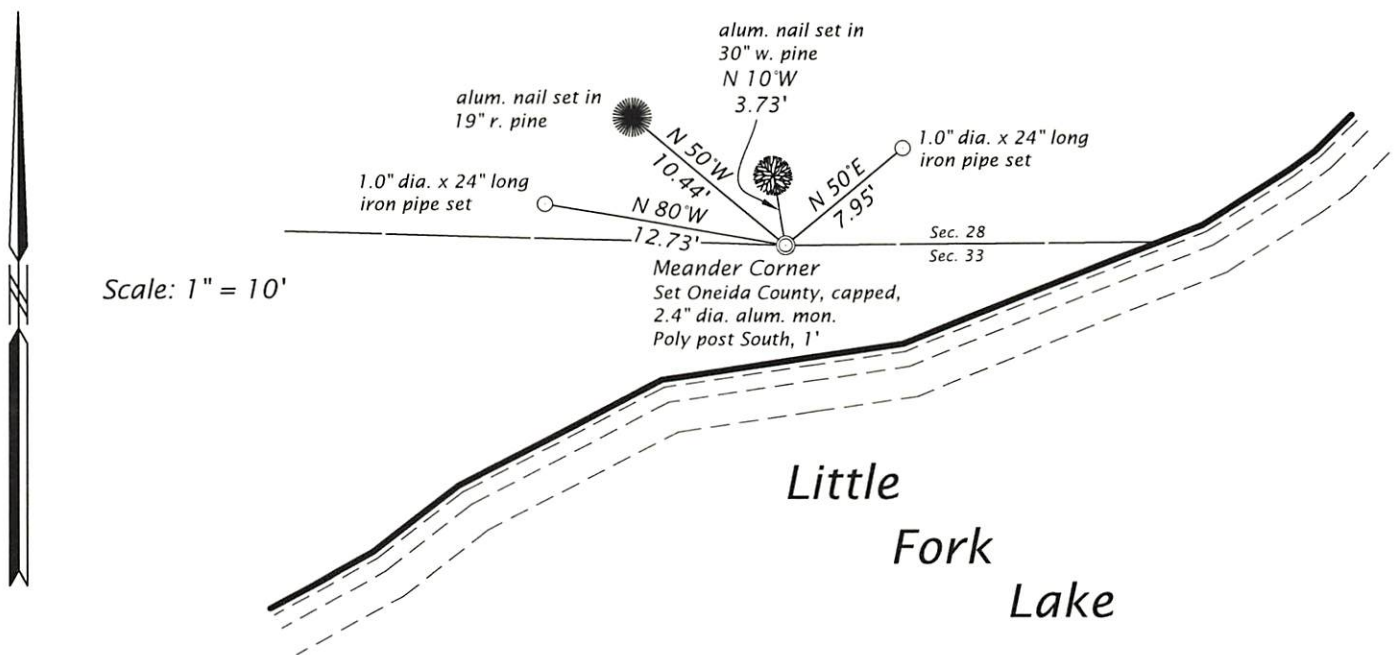
Original Surveyor: William D. Daugherty, Deputy Surveyor
Date of Survey: Commenced Sept. 6, 1859
Completed Sept. 10, 1859
Original B.T.'S Yellow Pine 12", N33°E, 31 lks
Yellow Pine 12" S 26°E, 6 lks

(f)(g)(h) DESCRIPTION OF MONUMENT FOUND AT THIS CORNER AND IF IT WAS ACCEPTED, STATE ALL EVIDENCE (MATERIAL, TESTIMONIAL, OCCUPATIONAL, PLATS, RECORD, OTHER MONUMENTS) USED AS A BASIS FOR ESTABLISHING LOCATION. IF NOT ACCEPTED OR IF NOTHING WAS FOUND, STATE EVIDENCE USED AS BASIS FOR ESTABLISHING LOCATION. IF REESTABLISHED THROUGH LOST CORNER PROPORTIONATE METHODS, INDICATE ALL MONUMENTS, DISTANCES AND DIRECTIONS USED TO ESTABLISH. INDICATE TYPE OF MONUMENT AND SIGN POST FOUND OR SET.

July 10, 1984 - recorded plat of Minne-Wonka-Lodge, James L. Will, RLS-1410, legends the meander corner monumented by a 1.0" dia. iron pipe found in place.

January 26, 2026, James D. Rein, PLS No. S-1234, we found, and I accepted, a 1.0" dia. x 30" long iron pipe, which we replaced it with an Oneida County, capped, 2.4" dia. aluminum monument. We further perpetuate the corner as shown in the plan.

(c)(d)(e) PLAN VIEW OF CORNER WITH TIES TO AT LEAST 4 WITNESS MONUMENTS. IF IN DISAGREEMENT WITH PREVIOUSLY ESTABLISHED CORNER, SHOW THE DISTANCE BETWEEN THE TWO CORNERS AND ALSO INDICATE THE TIES TO THE DISPUTED CORNER.



(i) I, JAMES D. REIN, PROFESSIONAL LAND SURVEYOR NO. S-1234 HEREBY CERTIFY THAT THE CORNER LOCATION ON THIS RECORD WAS DETERMINED BY ME OR UNDER MY DIRECTION AND CONTROL AND THAT THIS U.S. PUBLIC LAND SURVEY MONUMENT RECORD IS CORRECT AND COMPLETE TO THE BEST OF MY KNOWLEDGE AND BELIEF.



James D. Rein 3/16/26
SIGNATURE DATE

INDEX NO. V 10 - 11
3911280018