

U.S. PUBLIC LAND SURVEY MONUMENT RECORD

This form is intended and designed to fulfill all requirements of Wisconsin Administrative Code, Chapter A-E 7.08 U.S. Public Land Survey Monument Record (3) (a)(b)(c)(d)(e)(f)(g)(h)(i). An additional sheet may be added if necessary to confirm with said requirements.

The coordinate value shown has been verified by at least one of the following methods: 1) Comparison to a previously GNSS determined published value; 2) The value is the average of two or more GNSS observations at a markedly different time; 3) one or more distances were measured back to the GNSS observed corner from temporary GNSS observed offset locations.

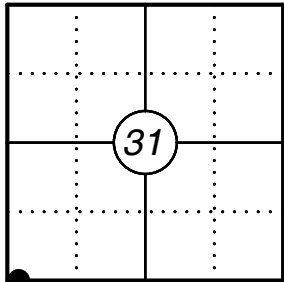
(a) Corner Location:

Meander Corner Section 31
Township 40 North
Range 11 East
Town of Lincoln/Washington
County of Vilas

WISCRS - Vilas County
Meander Corner Coord: N: 100192.03
E: 520221.49
Datum: NAD 83 (2011)
GNSS Method: RTK Direct
GNSS Control: WISCORS VRS

Wit. MC Coord: N: 100192.55
E: 520211.51

Corner ID: 4011310039



M.C.

(b) History of Original Corner:

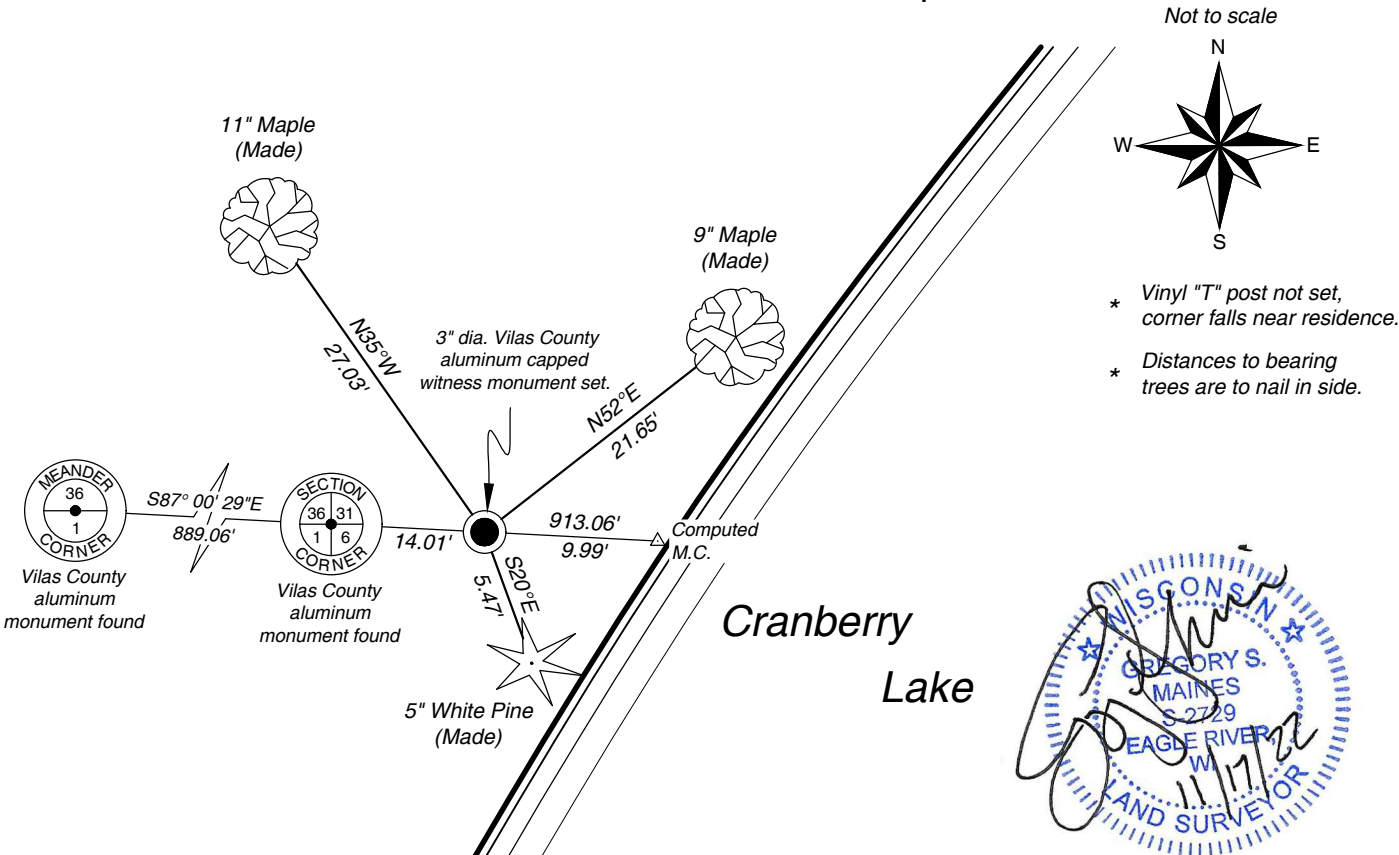
Original Surveyor: H.C. Fellows
Date of Survey: July 1859

Original B.T.'s: 8" White Pine - N 10° E, 53 Links

(f)(g)(h) Description of monument found at this corner and if it was accepted, state all evidence (material, testimonial, occupational, plats, records, other monuments) used as a basis for establishing location. If reestablishing through lost corner proportionate methods, indicate all monuments, distances, and directions used to establish. Indicate type of monument and sign post found or set.

- 01/28/1964FR Wincentsen, Oneida County online notes "Wincentsen1 - Pg 279" graphically shows a straight line from NW corner of Section 6 easterly to an MC on the west side of the island.
- 12/02/1964Robert Badow, VCS Map# B316 shows iron pipe 24' east of SW corner of Section 31 for MC.
- 05/11/1981James Will, VCS Map# B1817 indicates found 1 1/2" iron pipe in place.
- 10/26/2000James Will, VCS Map# B6542 does not show pipe.
- 10/21/2022As part of a Vilas County Remonumentation Project, I found no evidence of the meander corner near the westerly shoreline of Cranberry Lake. I computed the meander corner location based on VCS Map# B316, this position falls very close to the shoreline. I set a Vilas County aluminum capped witness monument stamped to identify the corner on the extension of the south line of Section 36 as depicted on VCS Map# B316 and westerly of the meander corner position 9.99 feet. I made three bearing trees to witness the corner as shown below.

(c)(d)(e) Plan view of corner with ties to at least four witnesses. If in disagreement with previously established corner, show the distances between the two corners and also indicate the tie to the disputed corner.



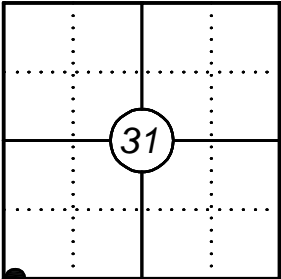
Certification

I, Gregory S. Maines, Professional Land Surveyor No. 2729, hereby certify that the corner location on this record was referenced by me or under my direction and control and that this U.S. Public Land Survey Monument Record is complete to the best of my knowledge and belief.

U.S. PUBLIC LAND SURVEY MONUMENT GNSS OBSERVATION RECORD

The coordinate value shown has been verified by at least one of the following methods:
1) Comparison to a previously GNSS determined published value.
2) The value is the average of two or more GNSS observations at a markedly different time.
3) One or more distances were measured back to the GNSS observed corner from temporary GNSS observed offset locations.

Corner ID: 4011310039



Observation Date: 10/21/2022
Meander Corner Section 31
Township 40 North
Range 11 East
Town of Lincoln/Washington
County of Vilas

WISCRS - Vilas County
Meander Corner Coord: Wit. MC Coord:
N: 100192.03 N: 100192.55
E: 520221.49 E: 520211.51
Datum: NAD 83 (2011)
GNSS Method: RTK Direct
GNSS Control: WISCORS VRS

M.C.

Site Photo



Monument Photo



I certify that I have surveyed the above location and that the information contained hereon is correct to the best of my knowledge and belief. The intent of this form is to add supplemental information to the chain of record for this corner. Please refer to the USPLS monument record for primary information.