

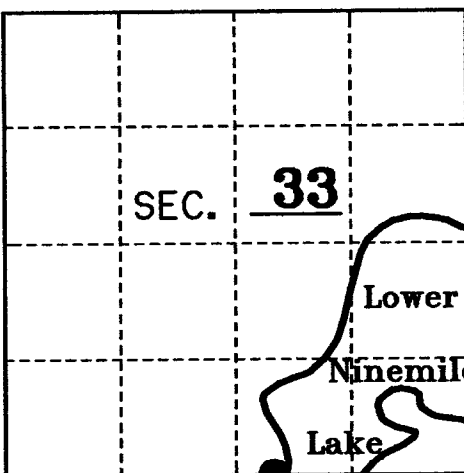
U.S. PUBLIC LAND SURVEY MONUMENT RECORD

Note: This form is intended and designed to fulfill all requirements of Wisconsin Administrative Code, Chapter A-E 7.08 U.S. Public Land Monument Record (3)(a)(b)(c)(d)(e)(f)(g)(h)(i). An additional sheet may be added if necessary to conform with said requirements. Deeds Square

(a) CORNER LOCATION: South Line
West Meander Corner of Section 33
Township 40 North, Range 11 East
Township/City VILAS/ONEIDA
County of Washington

(b) HISTORY OF ORIGINAL ESTABLISHMENT
Original Surveyor: H.C. Fellows
Date of Survey: July, 1859
Original B.T.'s:

Original corner set on the Right Bank of the Eagle River, but no Bearing Trees were made.



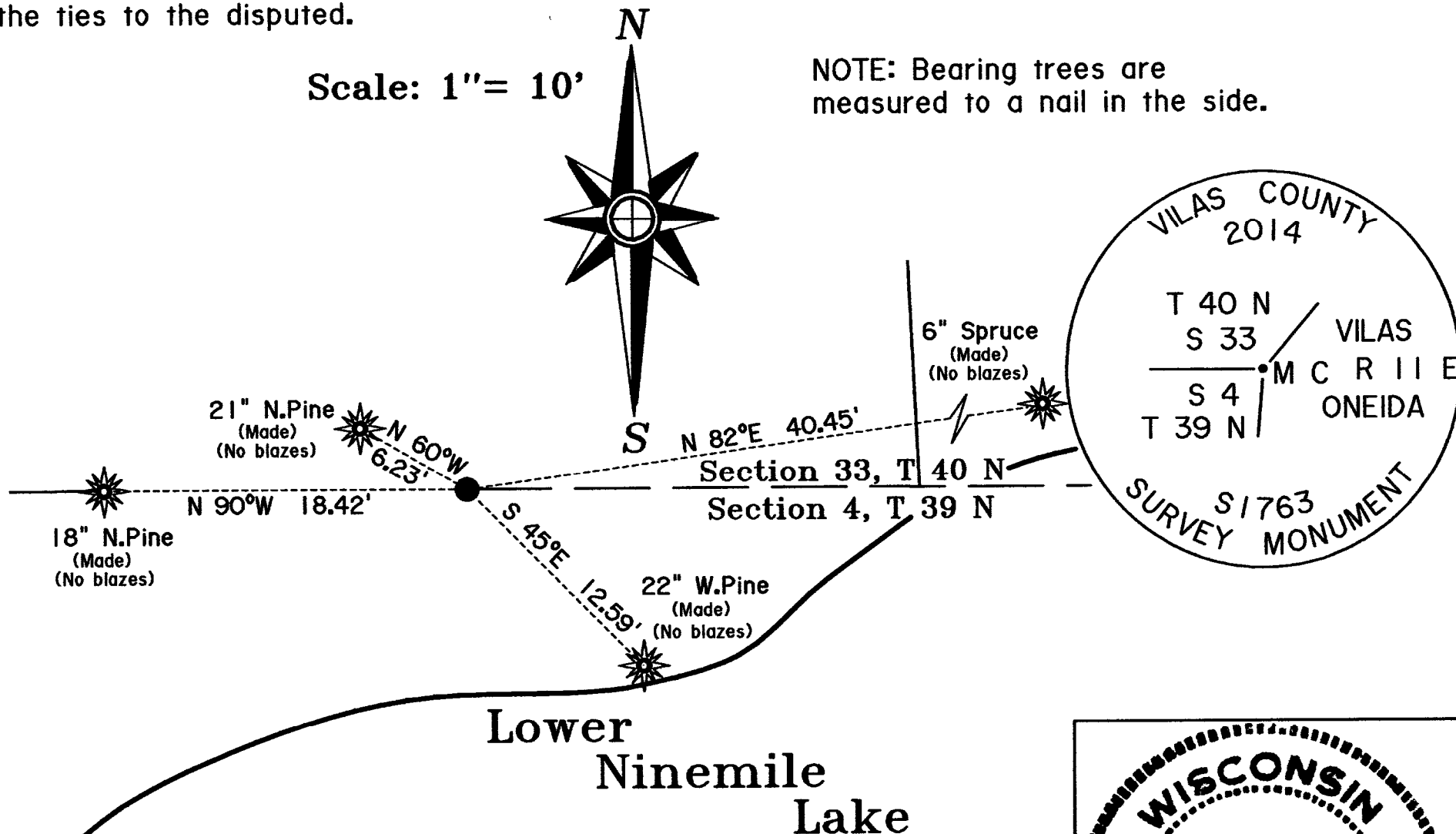
County or State Plane Coordinates
Northing _____
Easting _____
Datum Base _____

(b)(f)(g)(h) Description of monument found at this corner and if it was accepted, state all evidence (material, testimonial, occupational, plats, records, other monuments) used as a basis for accepting. If not accepted or if nothing was found, state evidence used as basis for establishing location. If reestablished through lost corner proportionate methods, indicate all monuments, distances and directions used to establish. Indicate type of monument and sign post found or set.

7/22/1999: Kip W. Soder of Soder Surveying runs from the SE section corner to the South 1/4 corner and found no evidence of the MC between them so he set a 1" iron pipe on line between the two corners and on the Westerly shore of Lower Ninemile Lake as the new Meander corner. See Vilas County Surveyor file No. B6241.

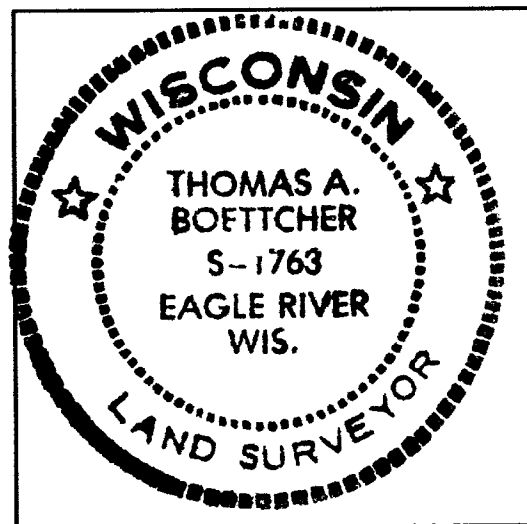
12/20/2014: I, Thomas A. Boettcher, found the above described 1" iron pipe by Soder about 10' North of the Shore of Lower Ninemile Lake. The pipe is flush with his red-top plastic paddle next to it. I stamped and set a 2-1/2" x 30" Vilas County aluminum capped monument over Soder's iron pipe leaving it up just above the surface of the ground. I could find no BT's so I made four new BT's but with no blazes since this is in a yard area. The trees are measured to a nail in the side base of each tree. I set a county plastic guard post 8" East of the corner.

(c)(d)(e) Plan view of the corner with ties to at least 4 witness monuments. If in disagreement with previously established corner, show the distances between the two corners and also indicate the ties to the disputed.



(i) I, Thomas A. Boettcher P.L.S. No. 1763
hereby certify that the corner location on this record was determined by me or under my direction and control and that this U.S. Public Land Survey Monument Record is correct and complete to the best of my knowledge and belief.

Signature [Signature] Date December 20, 2014



Index No. Z-11.12

VILAS COUNTY GPS OBSERVATION RECORD

Corner ID: 4011330018 Sec 33, T40N, R11E

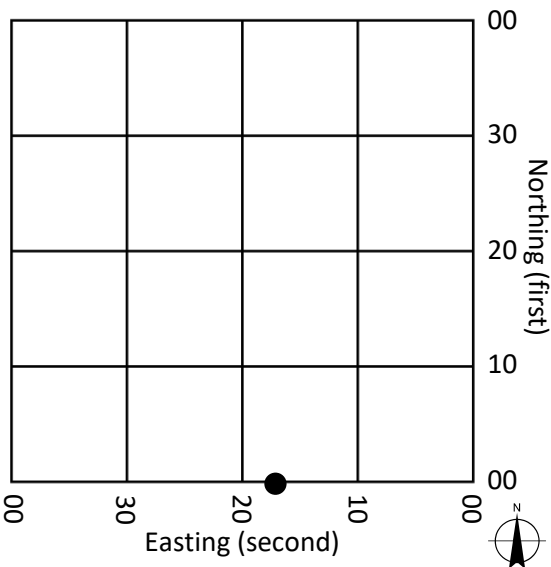
Observation 1

Date: 6/21/2023 Time: 10:48
Observation Length (Seconds): 60
Type (RTK, Static, Etc.): RTK
Base Station: CORS NETWORK

Observation 2

Date: 6/21/2023 Time: 1:33
Observation Length (Seconds): 60
Type (RTK, Static, Etc.): RTK
Base Station: CORS NETWORK

Monument Location



Site Notes (FD/Not FD, Type, Condition, Obstructions, GPS Observable, Equipment, Etc.):

FOUND ALUMINUM MONUMENT IN GOOD CONDITION AS DESCRIBED. SEE USPLSS MONUMENT RECORD FOR MORE INFORMATION.



Monument Photo



Site Photo

Vilas County Coordinate System

Datum: NAD83 (WISCRS)
North (USFT): 98,829.72
East (USFT): 535,602.25
Owner (Vilas Co., USGS, NGS, WiDOT, Etc.): Vilas Co.



Surveyor: Tony Jones
Date: 7/26/2023

I certify that I have observed the above location and that the information contained hereon is correct to the best of my knowledge and belief. The intent of this form is to add supplemental information to the chain of record for the above point. Please refer to the USPLSS monument record for primary information.

DISCLAIMER: This observation record and the corresponding coordinates are intended to be used for parcel mapping purposes only and do not represent an accurate land survey or boundary survey. The coordinate data was obtained using RTK GPS and the Wisconsin Continuously Operating Reference Stations. Vilas County in no way warrants the accuracy of this record or coordinate data and is not responsible for any use of this data in the location of property boundaries, property corners or public land survey system corners.