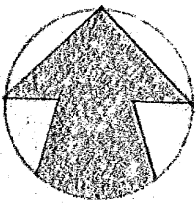
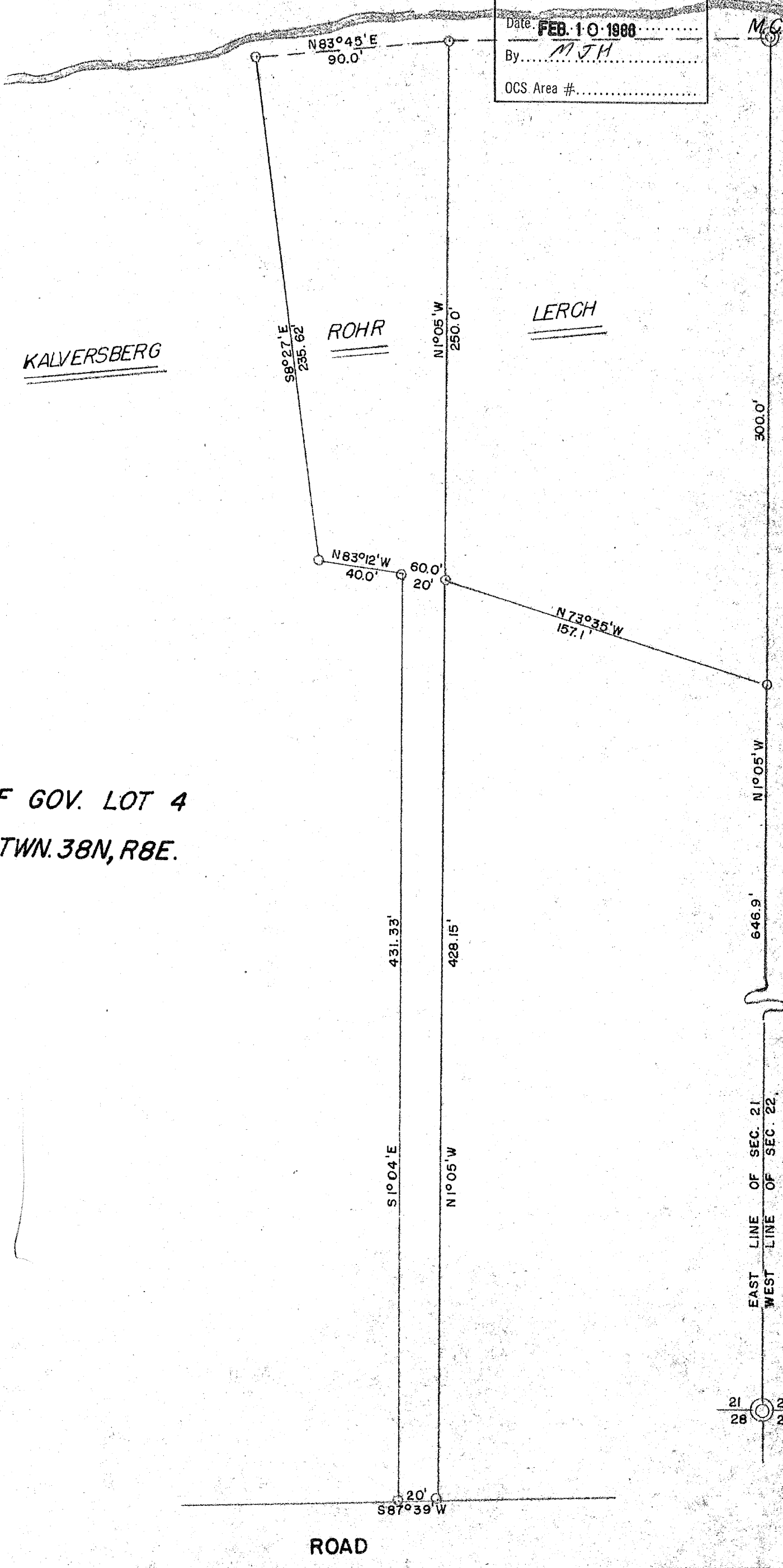


TOM

DOYLE

LAKE

RECEIVED & FILED # A10
 Oneida County Surveyor's Office
 Date FEB. 10 1988
 By MJM
 OCS Area #.....



PART OF GOV. LOT 4
 SEC. 21, TWN. 38N, R8E.

REVISIONS			SURVEY FOR	
NO.	DATE	BY		
1			HENRY ROHR	
2			1001 EAST KEEFE	
3			MILWAUKEE, WIS.	
4				

DRAWN BY	K	SCALE	1" = 50'	MATERIAL
CHK'D		DATE	14 JULY 62	DRAWING NO.
TRACED				

A10

21 22
28 27