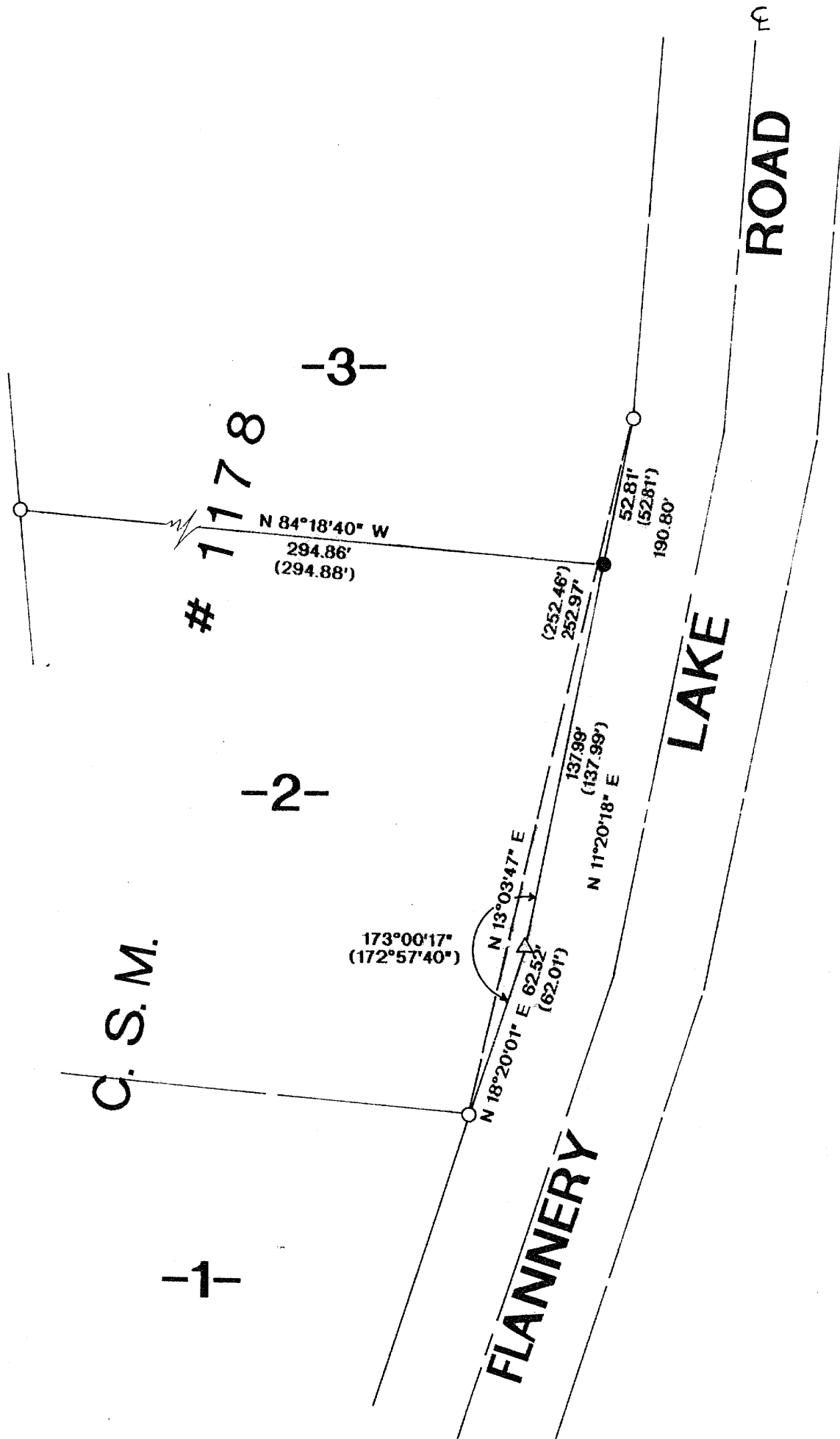


MAP # **A1005**
 DATE FILED.....
 BY.....
 DESCRIPTION FILED.....
 ONEIDA CO. SURVEYOR'S OFFICE

PART OF
THE SW 1/4 - SW 1/4, SECTION 27, T 37 N, R 8 E,
TOWN OF NEWBOLD,
ONEIDA COUNTY, WISCONSIN

MAP # **A1005**
 DATE FILED.....**DEC. 29, 2000**...
 BY...*J.P.*.....
 DESCRIPTION FILED.....
 ONEIDA CO. SURVEYOR'S OFFICE

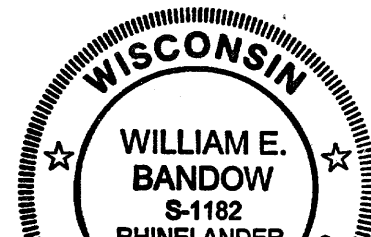


- RESET FOUND 1" X 30" IRON PIPE
- FOUND 1" IRON PIPE
- △ COMPUTED POSITION

I, WILLIAM E. BANDOW, HEREBY CERTIFY THAT I HAVE SURVEYED THE ABOVE LINE UNDER THE DIRECTION OF MATT FRANEY, THAT THE ABOVE MAP IS A TRUE AND CORRECT REPRESENTATION OF THE LANDS SURVEYED TO THE BEST OF MY KNOWLEDGE AND BELIEF, AND THAT I HAVE COMPLIED WITH THE PROVISIONS OF A-E 7 OF THE WISCONSIN ADMINISTRATIVE CODE.

William E. Bandow
 WILLIAM E. BANDOW S-1182

12-12-00
 DATE



SURVEY FOR MATT FRANEY		
SCALE: 1" = 50'	APPROVED BY:	DRAWN BY KAZ
DATE: 20JUL00		REVISED