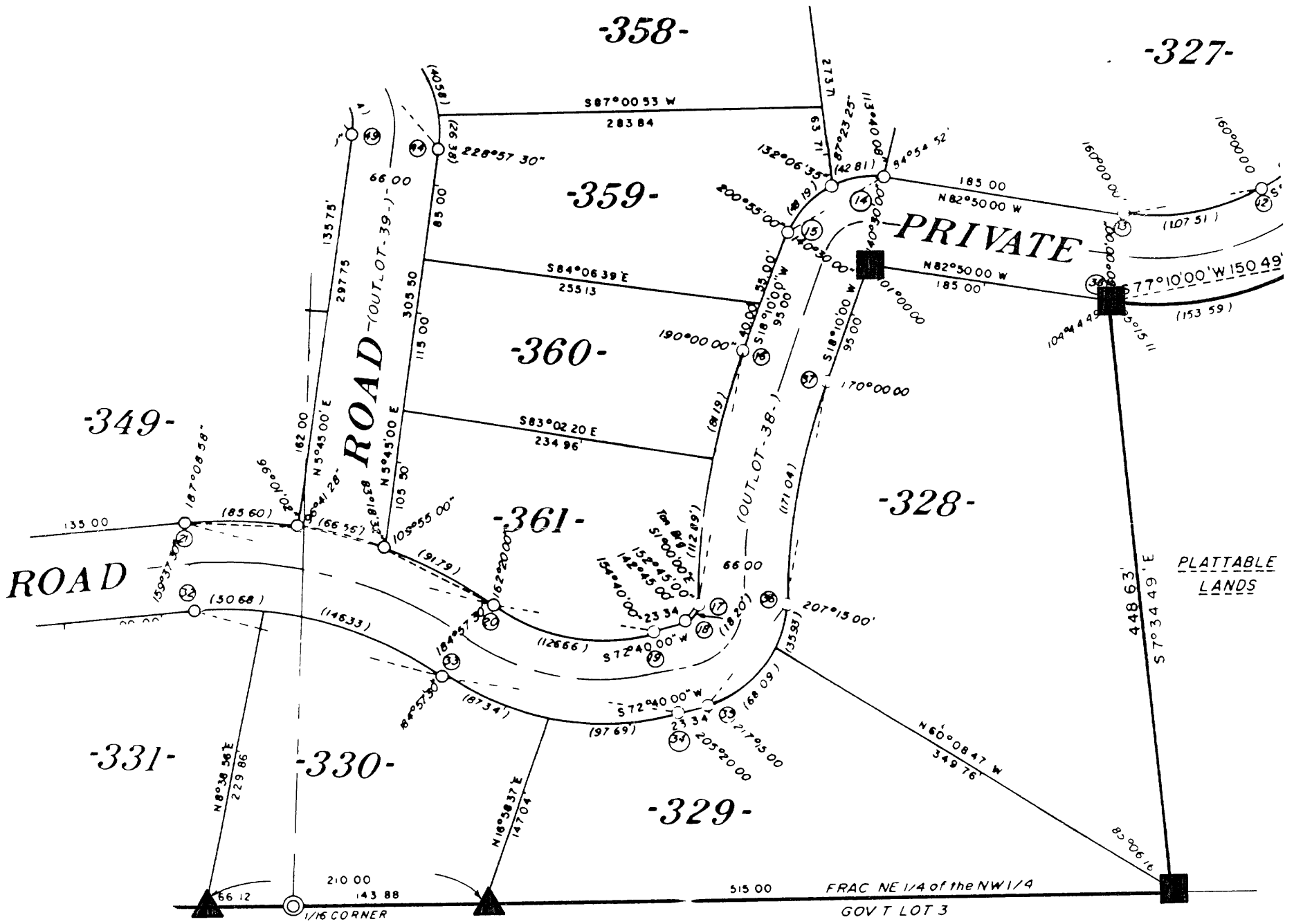


LOTS 328, 329, & 330 TIMBER RIDGE III FRAC. NW 1/4 SECTION 4, T38N, R6E

Hazelhurst Township
Oneida County, Wisconsin

MAP # A 1045
DATE FILED AUG 16 2001
BY *JF*
DESCRIPTION FILED
ONEIDA CO. SURVEYOR'S OFFICE

Bearings Solar

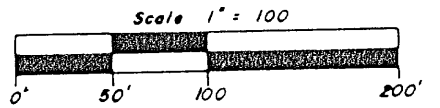
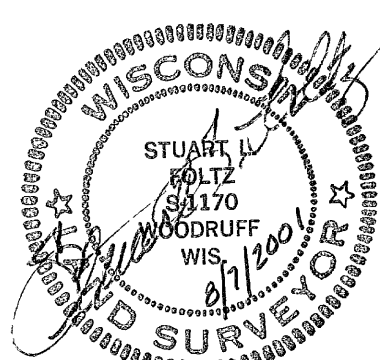


August 7, 2001

Recovered, verified, and marked monuments as shown for Lots 328, 329, and 330, as follows

- ▲ = 1" iron pipe found in place
- = 1/4" iron rod found in place

This survey was completed by Foltz and Associates, Inc for the purpose of locating existing lot corners by the order of Don Elason, who has executed a written waiver for all other requirements of Wis Adm Code Chap A-E 7. A closed traverse was not made and the minimum accuracy is 1 part in 100 and plus or minus 2°



Bearings and distances shown are based upon a survey by Inman-Foltz and Associates, Inc dated May 23, 1978

Foltz and Associates, Inc

Surveyors	Engineers
8612 Highway 51 North,	Minocqua Wisconsin 54548
(715) 356-9485	fax (715) 356-1841

A1045

A1045