

EASEMENT SURVEY

For
LOT 2

of

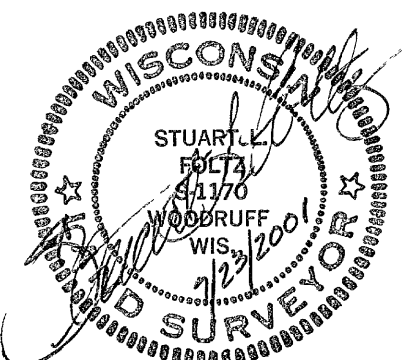
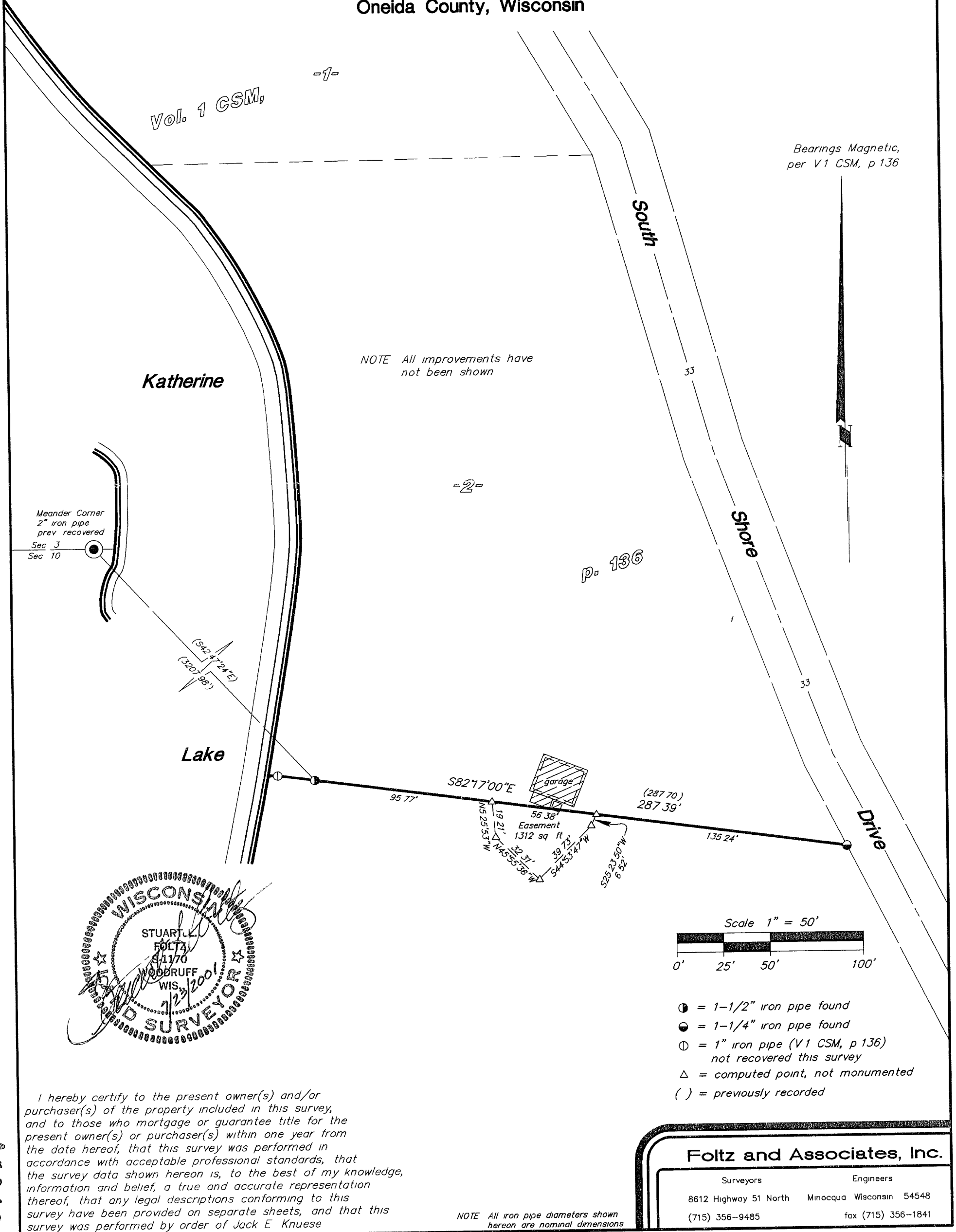
Vol. 1 Certified Survey Maps, p. 136

Being part of

GOV'T. LOT 4 SECTION 11, T38N, R6E

Town of Hazelhurst
Oneida County, Wisconsin

MAP #	A 1046
DATE FILED	AUG 16 2001
BY	<i>pp</i>
DESCRIPTION FILED	
ONEIDA CO SURVEYOR'S OFFICE	



Foltz and Associates, Inc.

Surveyors	Engineers
8612 Highway 51 North	Minocqua Wisconsin 54548
(715) 356-9485	fax (715) 356-1841

C Winkler 5-11-386