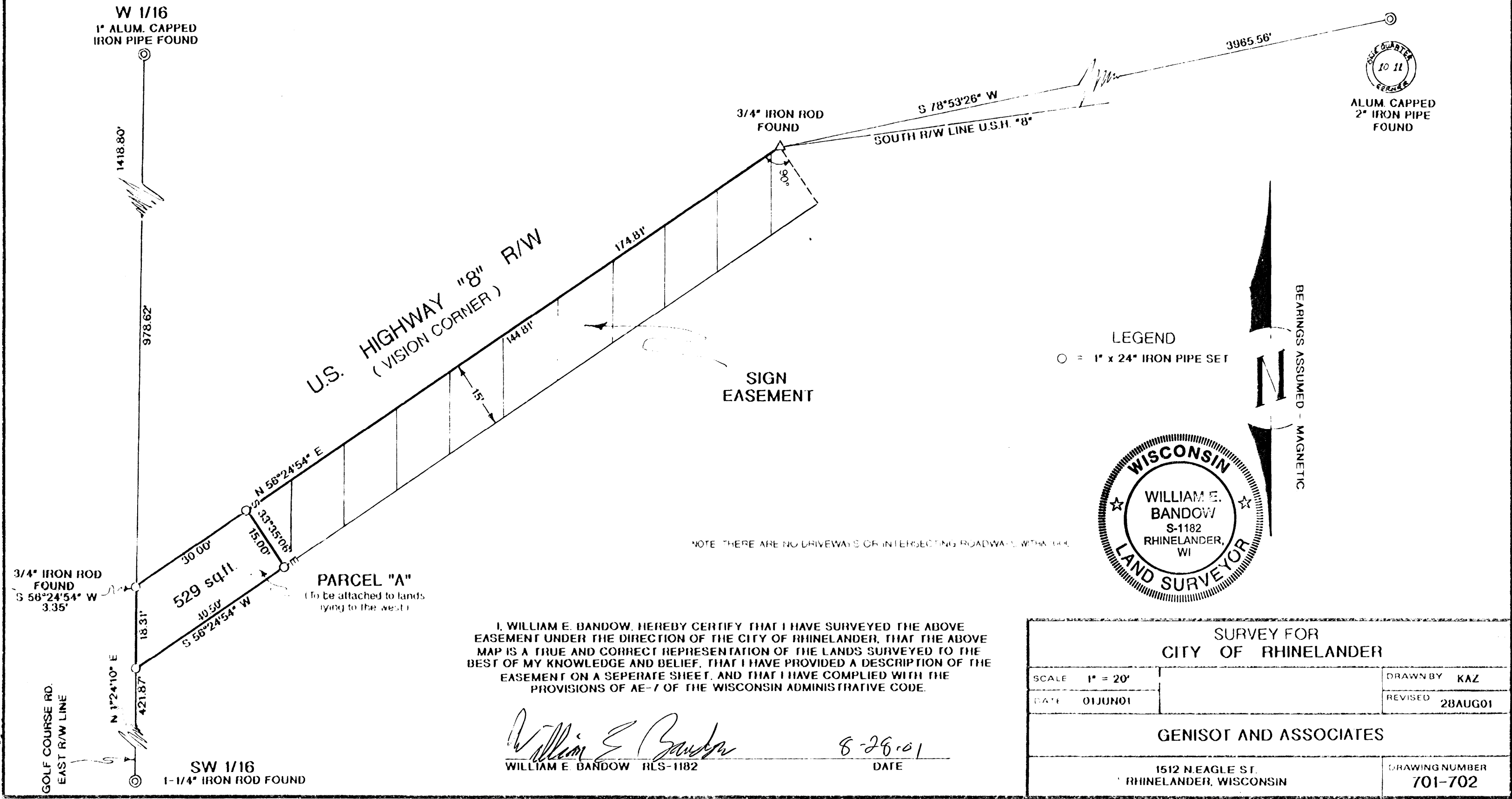


MAP # A1059
 DATE FILED... OCT 29 2001
 BY... PJD
 DE... SECTION FILED
 ONEIDA CO. SURVEYOR'S OFFICE

PART OF
THE NE1/4-SW1/4, SEC. 10, T36N, R8E,
 TOWN OF CRESCENT,
 ONEIDA COUNTY, WISCONSIN



I, WILLIAM E. BANDOW, HEREBY CERTIFY THAT I HAVE SURVEYED THE ABOVE EASEMENT UNDER THE DIRECTION OF THE CITY OF RHINELANDER, THAT THE ABOVE MAP IS A TRUE AND CORRECT REPRESENTATION OF THE LANDS SURVEYED TO THE BEST OF MY KNOWLEDGE AND BELIEF, THAT I HAVE PROVIDED A DESCRIPTION OF THE EASEMENT ON A SEPERATE SHEET, AND THAT I HAVE COMPLIED WITH THE PROVISIONS OF AE-7 OF THE WISCONSIN ADMINISTRATIVE CODE.

William E. Bandow
 WILLIAM E. BANDOW RLS-1182
 8-26-01
 DATE

SURVEY FOR CITY OF RHINELANDER		
SCALE 1" = 20'		DRAWN BY KAZ
DATE 01JUN01		REVISED 28AUG01
GENISOT AND ASSOCIATES		
1512 N. EAGLE ST. RHINELANDER, WISCONSIN		DRAWING NUMBER 701-702