

V. 1145 P. 350

106

Original
96.10
10.15

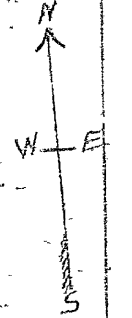
SEC LINE
13.20 ft

RF SURV.
88° 00'
872 ft

1/6 COR

Post

SEC 16-T. 39-N-R4-E



SURVEYED + DRAWN by
U.C. STEFFECK
MERRILL WIS.
Scale 200 ft = 1 inch

SQUAW LAKE

Hill
26.2 ACRES

Maghole
80.7 ACRES

STONE CREEK

TOWN ROAD

1332 ft

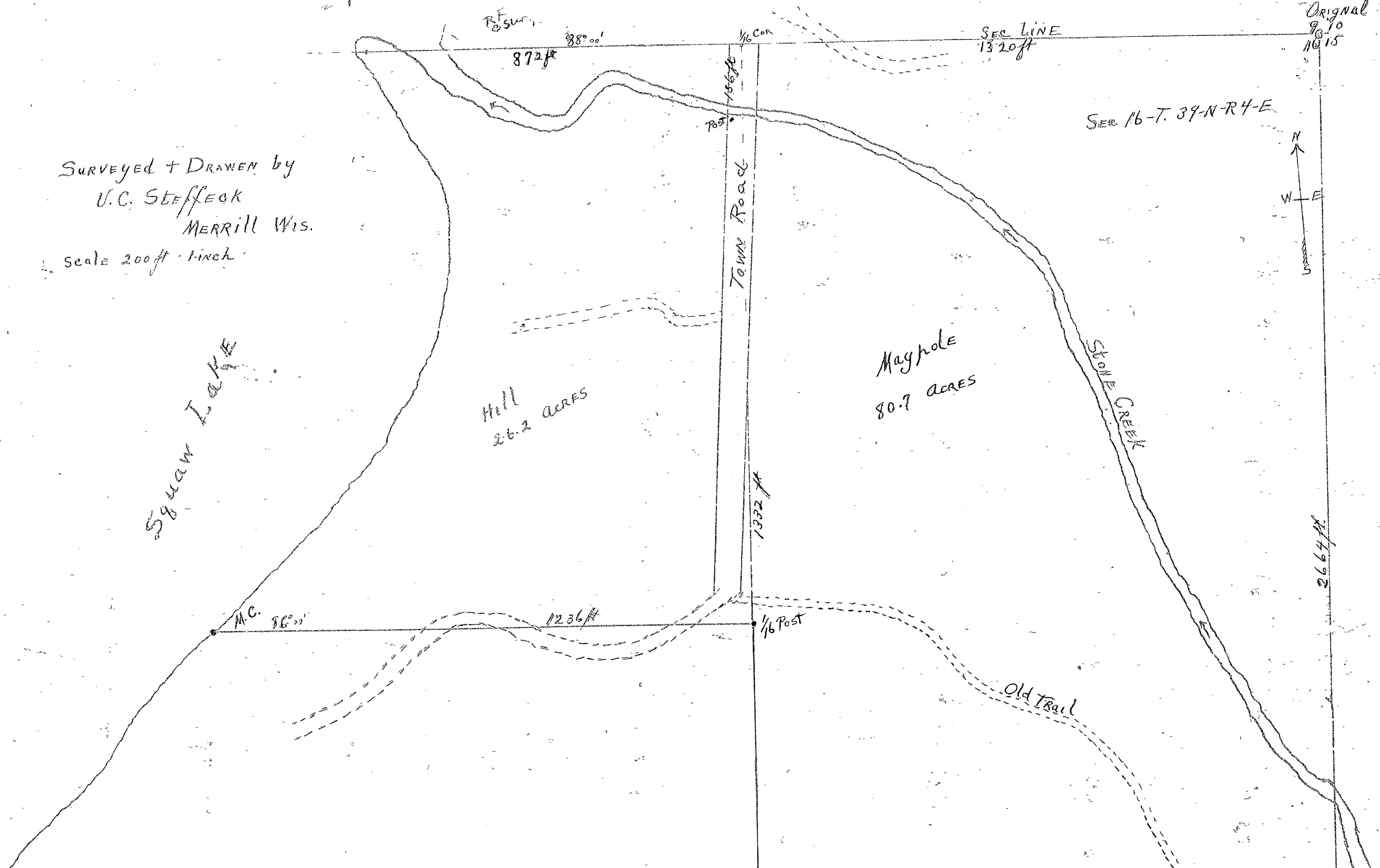
M.C. 96° 22'

1236 ft

1/6 Post

2664 ft

Old Trail



SQUAW LAKE

Hill
26.2 ACRES

Mayhole
80.7 ACRES

STONE CREEK

M.C. 86° 00'

1236 ft

1/16 Post

Old Trail

Hart
49.4 ACRES

M.C.

1846 ft

4° 00' E

1832 ft

1/16 Post

86° 00'

1320 ft

4° 00' E

2664 ft

ORI
1/4 S
CO

