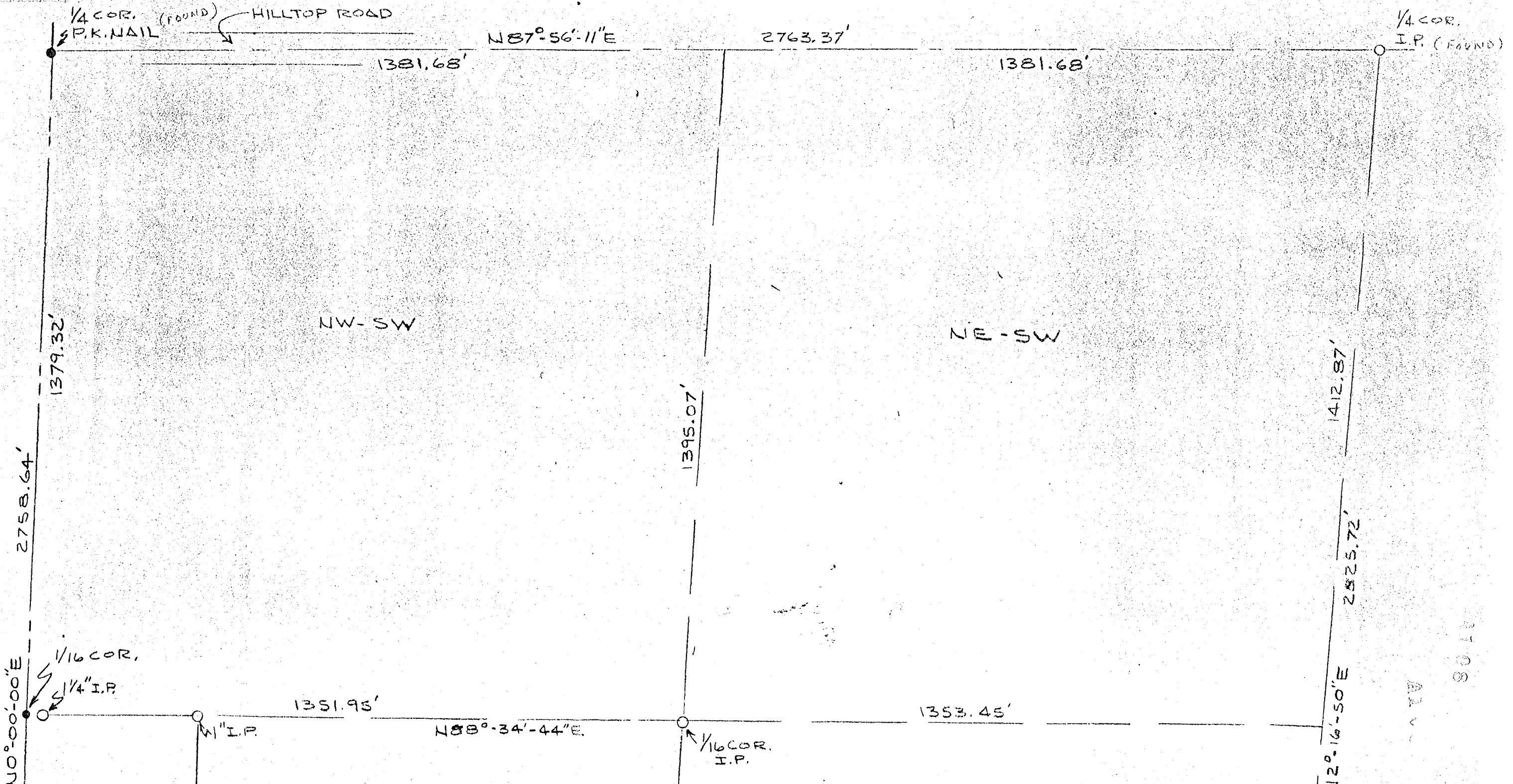


SUBDIVISION OF THE SW 1/4, SEC. 16  
 T36N-R9E, TOWN OF PELICAN, ONEIDA CO.

RECEIVED & FILED 1-08  
 Oneida County Surveyor's Office  
 Date FEB. 10. 1988  
 By: MJP  
 COS Area #



1108  
 A 1 V  
 SOL

T36N - R9E, TOWNSHIP OF PELICAN, ONEIDA CO.  
SW-SW SEC. 16A

RECEIVED & FILED # A.I.D.S.  
Oneida County Surveyor's Office  
Date FEB. 10 1986  
By MJH  
OCS Area #



RECEIVED & FILED # A.I. 008  
Outside County Surveyor's Office  
Date FEB. 10 1988  
By P.V.H.

GERMOND ROAD

2758.0

008 Area # NO-00-00"E

1379.32'

CERTIFIED SURVEY PLAT  
BY A.M. HESS

1351.95'

N88°-34'-44"E

1353.45'

KENNEDY  
SW 1/4 - SW 1/4

1396.53'  
N1°-08'-17"E

LOUIS WOLF  
SE 1/4 - SW 1/4

1412.87'

N2°-16'-50"E

2825.72'

33.33'

17  
20  
16  
20  
1/4 I.P.

BRASS CAP REF. - R1P20  
35 LINKS EAST

1" I.P.

1323.90'

N89°-16'-56"E

1/16 COR.  
1 1/4" I.P.

2647.80'

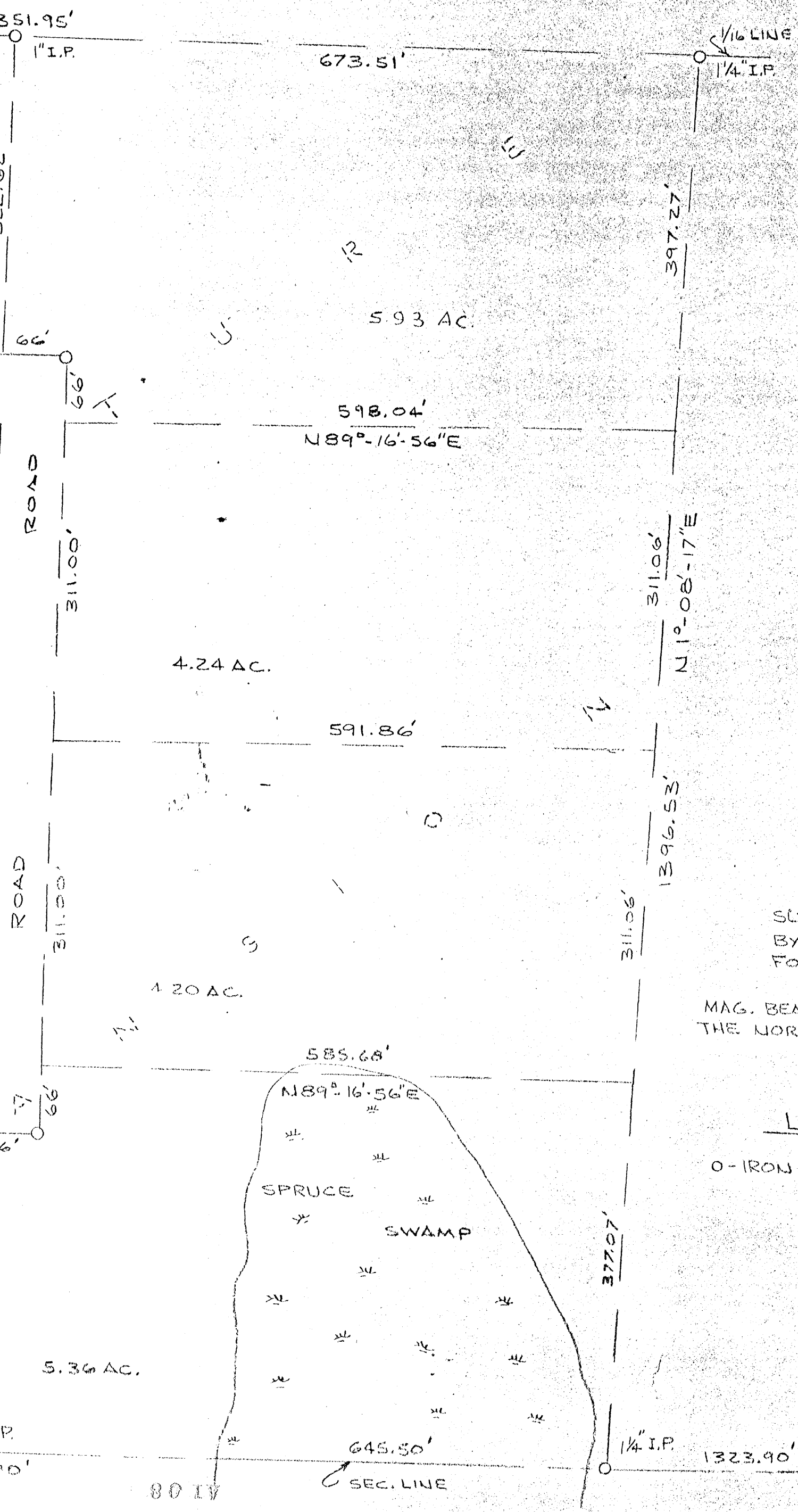
1323.90'

1/4 COR. - OLD FENCE  
WITNESS - 12" BIRCH  
12" BIRCH 7' or south

8013  
4100

SURVEY FOR JOE KENNEDY  
BY A.M. HESS - 5666 DEC. 1975

RECEIVED & FILED # A 1 0 8  
 Oneida County Surveyor's Office  
 Date FEB. 10. 1988  
 By M. J. H.  
 OCS Area #.....



SURVEYED DECEMBER 1975  
 BY A.M. HESS - S666  
 FOR JOE KENNEDY

MAG. BEARINGS ORIENTED TO  
 THE NORTH-SOUTH SECTION LINE

LEGAND

O-IRON PIPE 30" IN LENGTH

SCALE: 1" = 100'