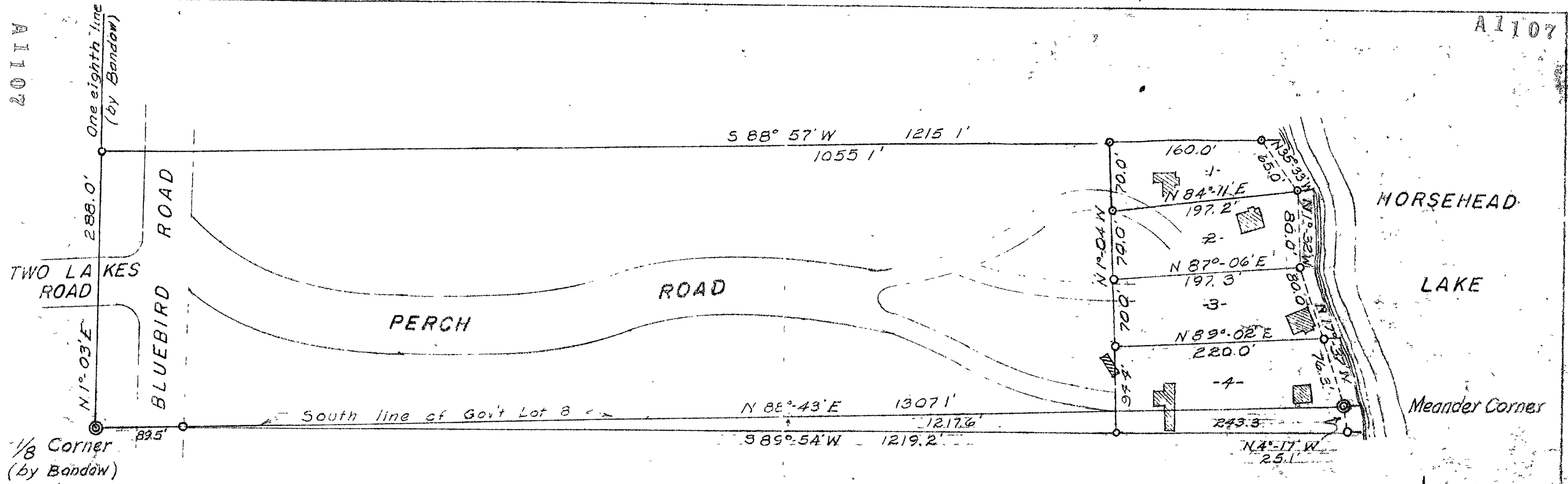


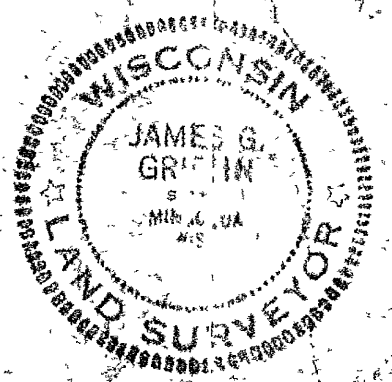
A1107

A1107



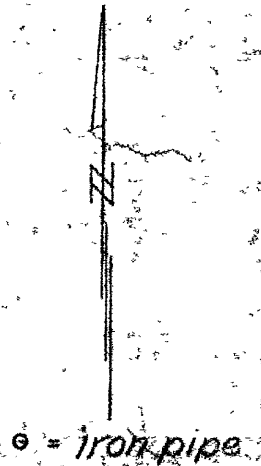
Part of
GOVT. LOTS 88 & 9
SECTION 15, T 38 N, R 7 E
 Oneida County, Wis.

Scale 1" = 100'
 July, 1964
 Revised March, 1967
 Revised Sept 1968



Northwoods Surveyors
James G. Griffin
 Land Surveyor

MAP # **A1107**
 DATE FILED **FEB 6 2002**
 BY *JG*
 DESCRIPTION FILED
 ONEIDA CO. SURVEYOR'S OFFICE



A1107