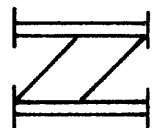
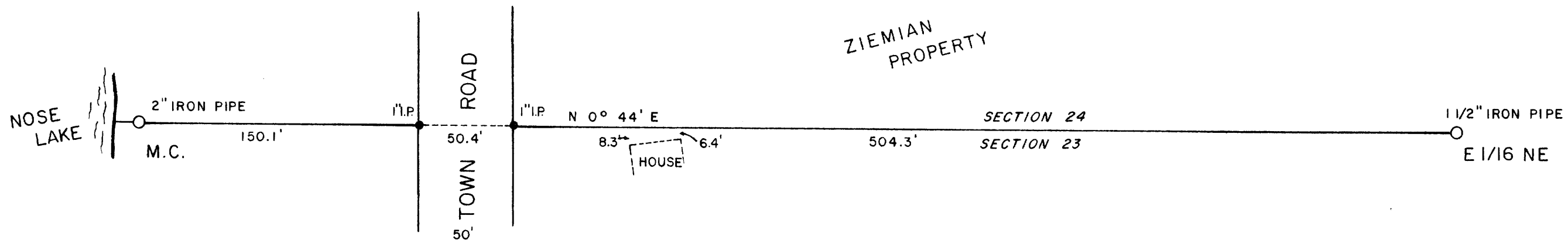


SURVEY OF LINE BETWEEN E1/16 NE & MEANDER CORNER ON SOUTH SIDE OF NOSE LAKE, BEING THE LINE BETWEEN SECTION 23 & SECTION 24, TOWNSHIP 36 NORTH, RANGE 7 EAST, TOWN OF WOODBORO, ONEIDA COUNTY, WISCONSIN.

RECEIVED & FILED #
 Oneida County Surveyor's Office
 Date FEB. 10 1983
 By M.J.H.
 OCS Area #



I, William Immich, hereby certify that I have surveyed the above line under the direction of Mr. Joe Ziemian, and that the above map is a true and correct representation of the lands surveyed to the best of my knowledge and belief.

William Immich November 7, 1983
 William Immich date



GENISOT & ASSOCIATES INC. 1512 EAGLE STREET RHINELANDER, WISCONSIN 54501		
SCALE: 1" = 60'	APPROVED BY:	DRAWN BY M J H
DATE: 11-7-1983		REVISED

ALLI