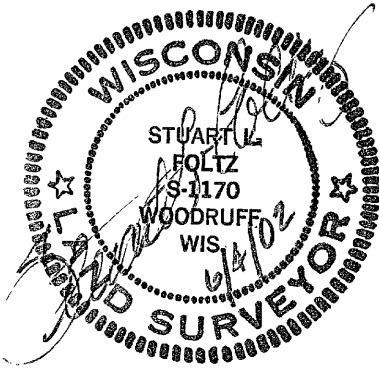
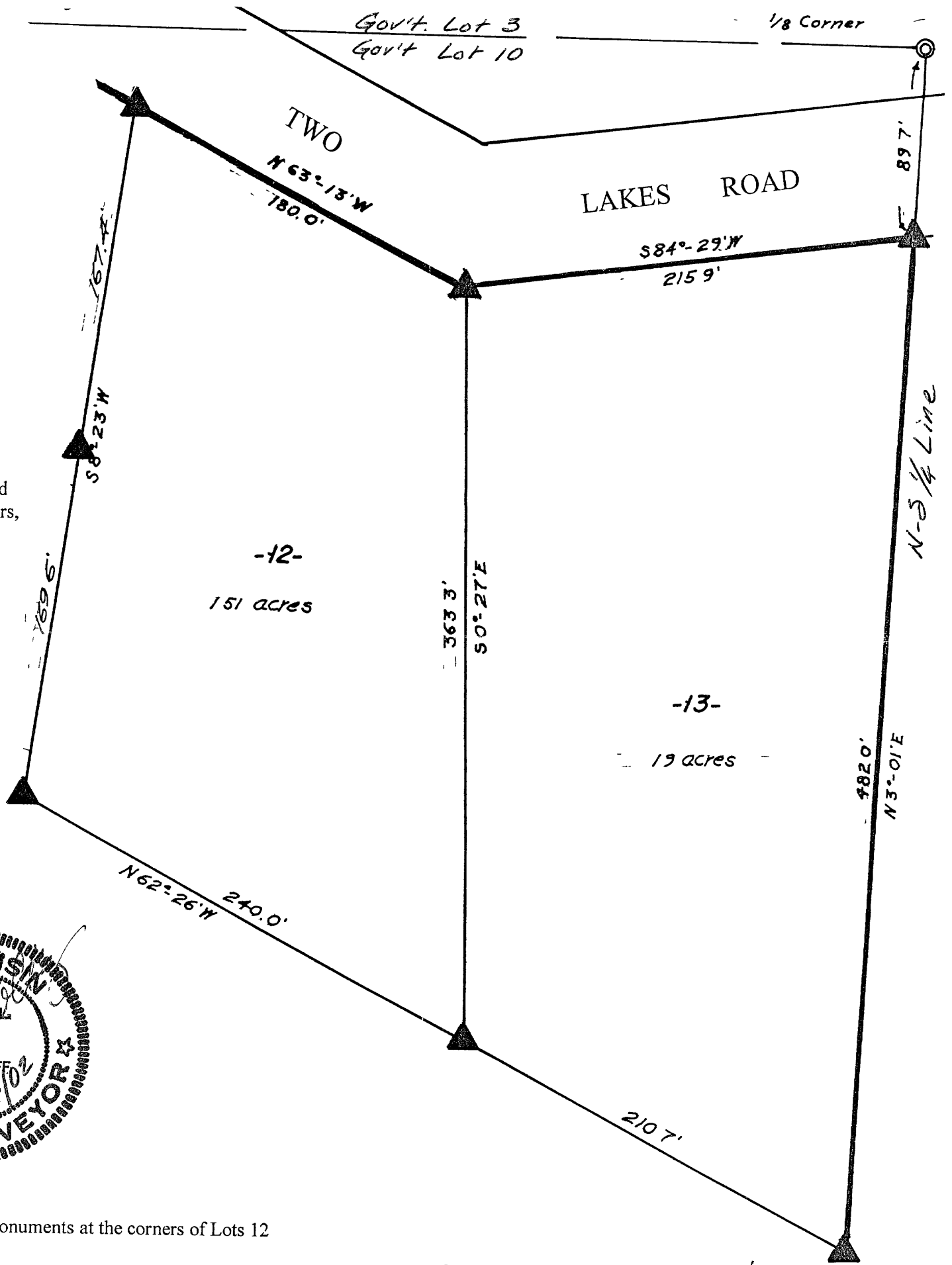


Part of  
**G.L. 10, Section 15, T38N, R7E**  
 Town of Lake Tomahawk  
 Oneida County, Wisconsin



Scale: 1" = 60'

Bearings and distances shown are based upon a survey by Northwoods Surveyors, Inc dated July, 1967



Recovered, verified, and marked monuments at the corners of Lots 12 and 13, as follows

▲ = Iron monument found in place

This survey was completed by Foltz and Associates, Inc for the purpose of locating existing lot corners by the order of Bill White, who has executed a written waiver for all other requirements of Wis Adm Code Chap A-E 7. A closed traverse was not made and the minimum accuracy is 1 part in 100 and plus or minus 2°

MAP # **A 1124**  
 DATE FILED **JUL 05 2002**  
 BY *js?*  
 DESCRIPTION FILED  
 ONEIDA CO. SURVEYOR'S OFFICE

**Foltz and Associates, Inc.**  
 Surveyors                      Engineers  
 8612 Highway 51 North      Minocqua Wisconsin 54548  
 (715) 356-9485                      fax (715) 356-1841