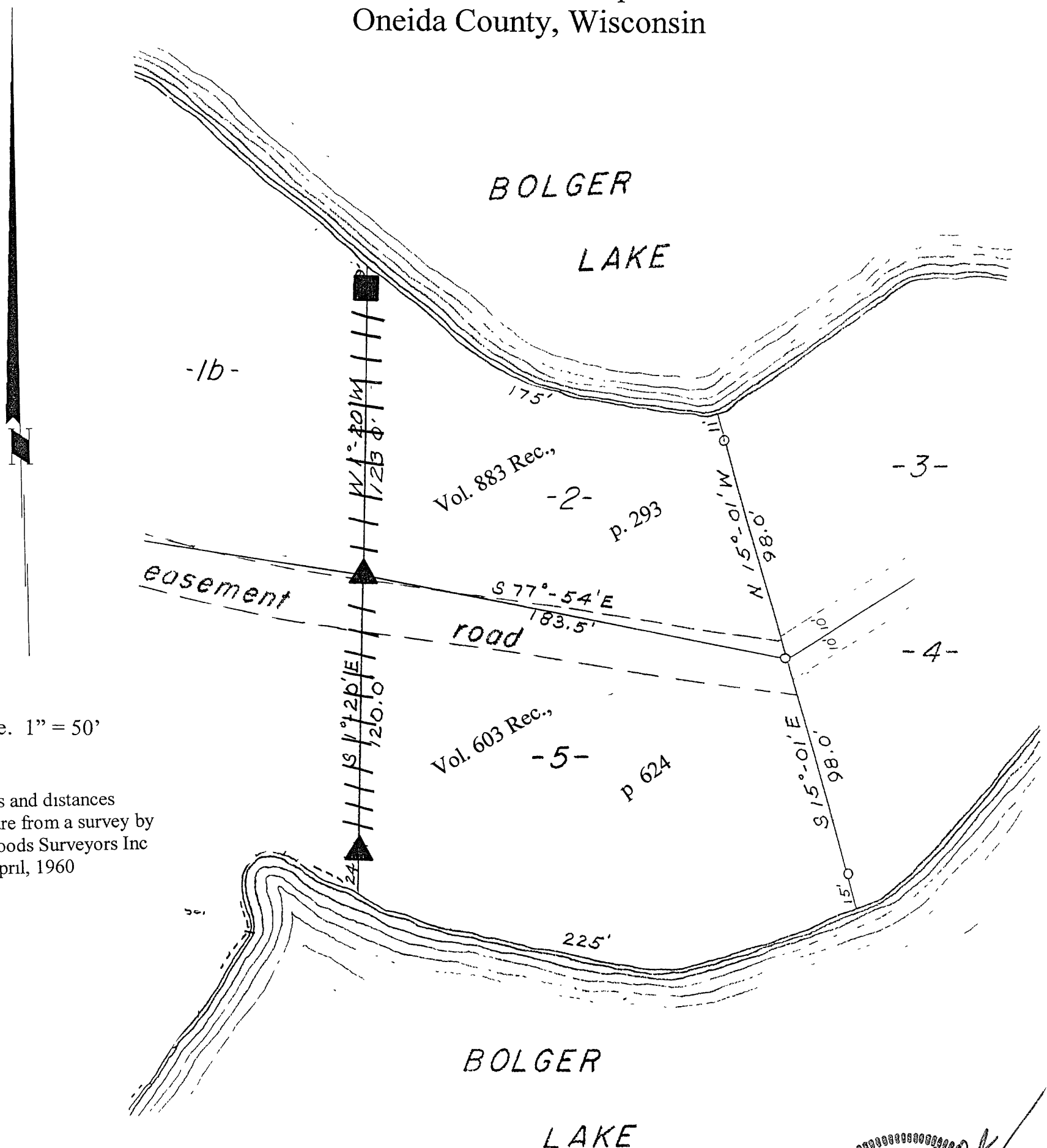


MAP # A 1141
 DATE FILED AUG 23 2002
 BY
 DESCRIPTION FILED
 ONEIDA CO. SURVEYOR'S OFFICE

Part of
Gov't Lot 2
Section 27, T39N, R6E
 Town of Minocqua
 Oneida County, Wisconsin



Scale. 1" = 50'

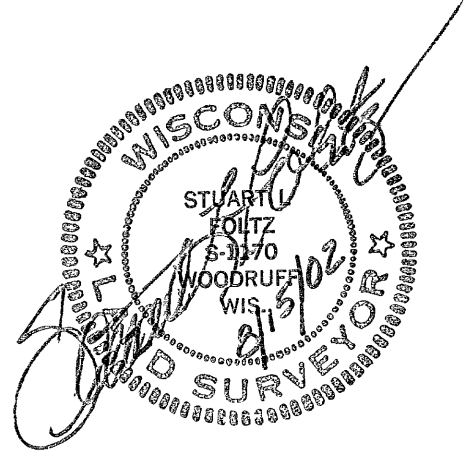
Bearings and distances shown are from a survey by Northwoods Surveyors Inc dated April, 1960

August 15, 2002

Recovered, verified, and marked monuments on the west lines of Lots 2 and 5 and marked the approximate lot lines, as follows

- ▲ = Iron monument found in place
- = Corner out, falls in excavated area for boat launch, Set lath stake at approximate location
- ||| = Lot lines marked approximately with blue paint

This survey was completed by Foltz and Associates, Inc for the purpose of locating existing lot corners and flagging approximate lot lines by the order of William J Kassel, who has executed a written waiver for all other requirements of Wis Adm Code Chap A-E 7. A closed traverse was not made and the minimum accuracy is 1 part in 100 and plus or minus 2°



Foltz and Associates, Inc

Surveyors Engineers
 8612 Highway 51 North Minocqua Wisconsin 54548
 (715) 356-9485 fax (715) 356-1841