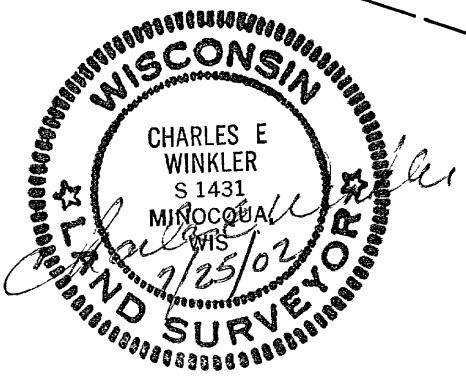
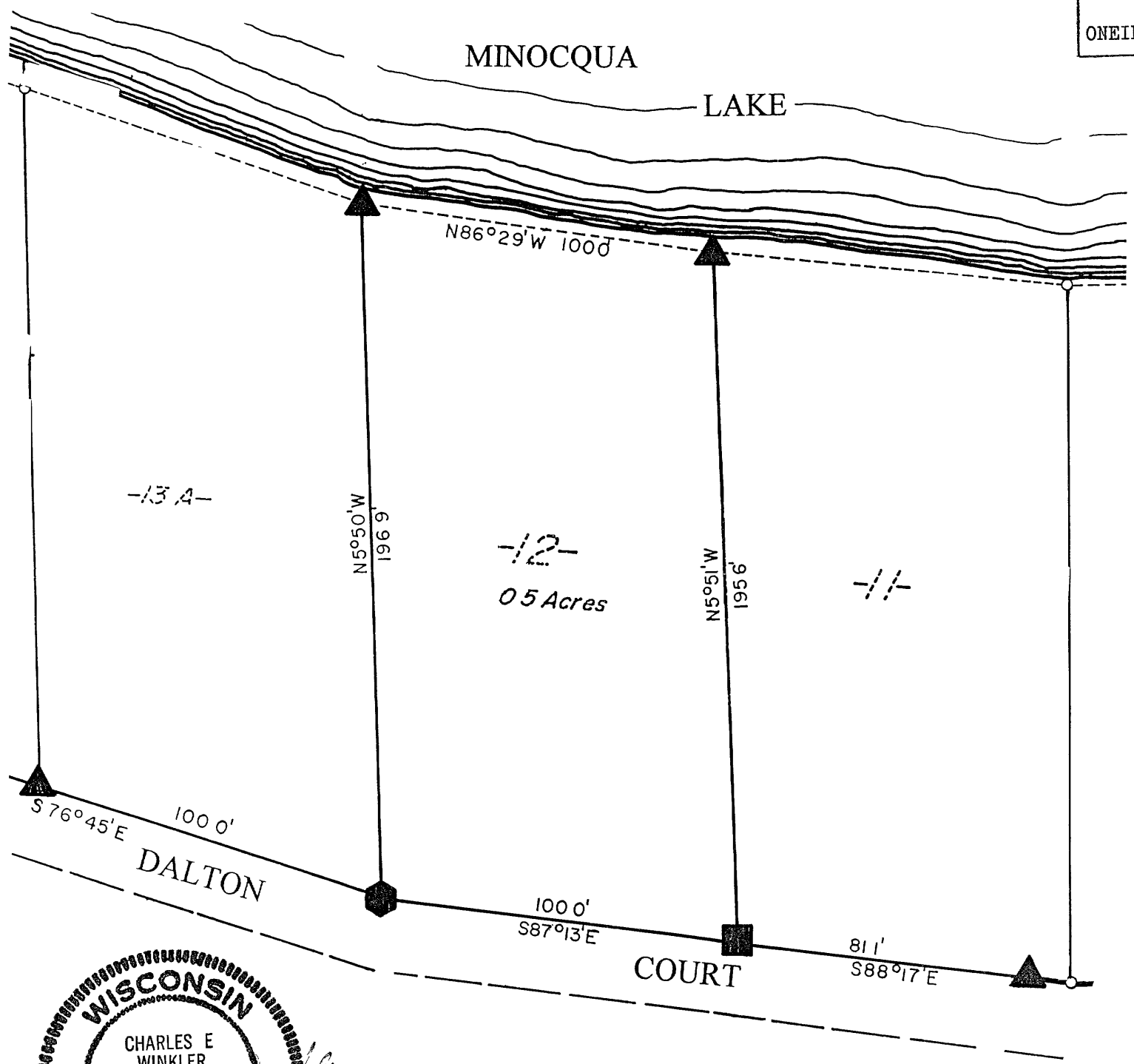


A 1142

A 1142




**LOT 12**  
of the  
**FIRST ADDITION**  
to  
**MINOCQUA HEIGHTS GOLF AND COUNTRY CLUB**  
in  
**Government Lot 3**  
**Section 13, T39N, R6E**  
Town of Minocqua  
Oneida County, Wisconsin

MAP #	<b>A 1142</b>
DATE FILED	<b>AUG 23 2002</b>
BY	<i>J.P.</i>
DESCRIPTION FILED	
ONEIDA CO SURVEYOR'S OFFICE	



July 25, 2002

Recovered, verified, and marked monuments at the corners of Lot 12, as follows

-  = Iron monument found in place
-  = Survey marker nail set in pavement per Northwoods Surveyors field notes dated 6/9/69
-  = Iron monument set per Northwoods Surveyors field notes dated 6/9/69

Bearings and distances shown are based upon a survey by Northwoods Surveyors Inc dated June, 1969

Scale: 1" = 40'

Bearings Solared

This survey was completed by Foltz and Associates, Inc. for the purpose of locating existing lot corners by the order of Joseph Tazelaar, who has executed a written waiver for all other requirements of Wis Adm Code Chap A-E 7. A closed traverse was not made and the minimum accuracy is 1 part in 100 and plus or minus 2°

**Foltz and Associates, Inc**

Surveyors	Engineers
8612 Highway 51 North (715) 356-9485	Minocqua Wisconsin 54548 fax (715) 356-1841

A 1142