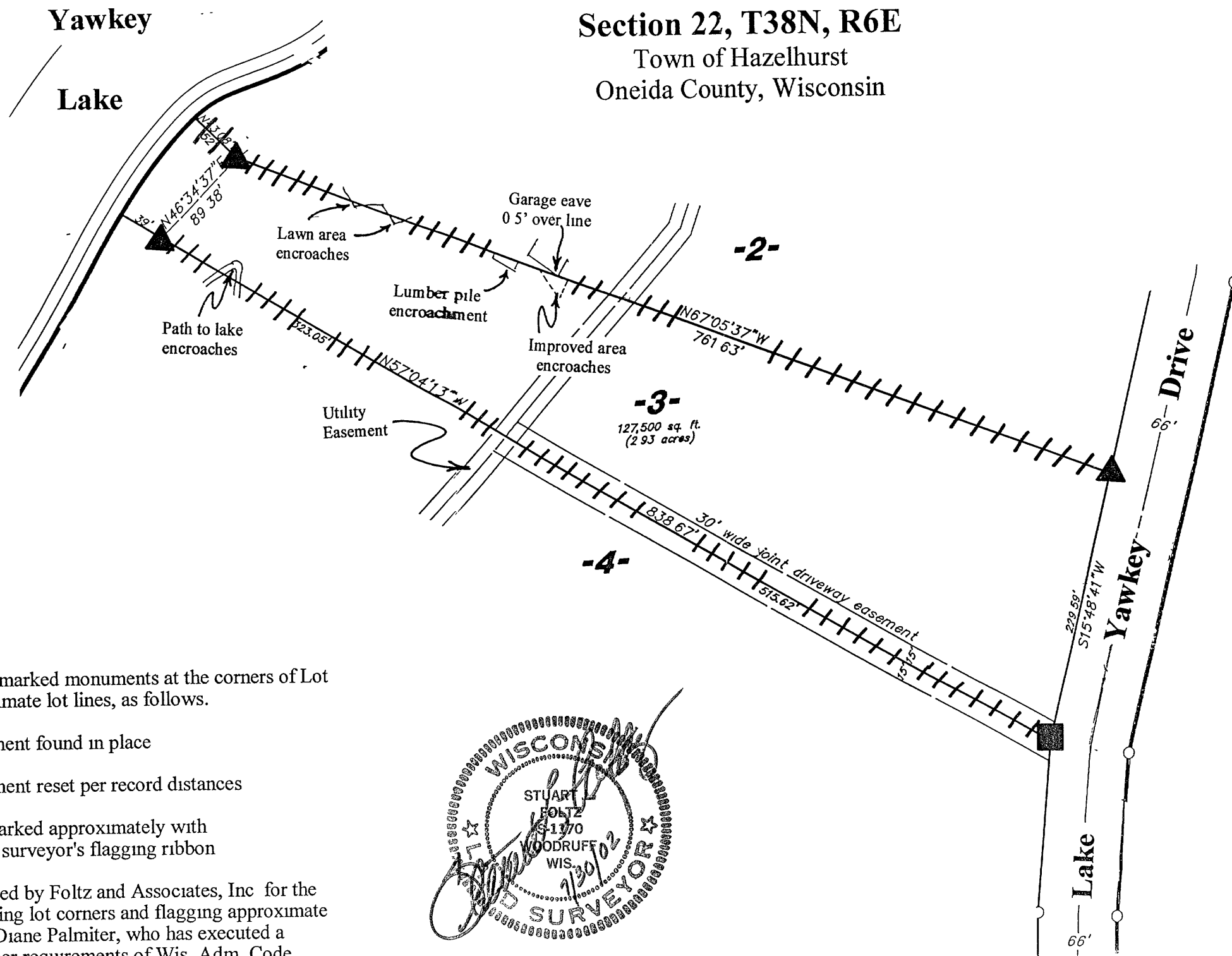


LOT 3
of the County Plat of
"YAWKEY HEIGHTS"
in
Gov't Lot 1
Section 22, T38N, R6E
Town of Hazelhurst
Oneida County, Wisconsin

MAP # **A 1 1 4 3**
DATE FILED **AUG 23 2002**
BY *JSP*
DESCRIPTION FILED
ONEIDA CO. SURVEYOR'S OFFICE

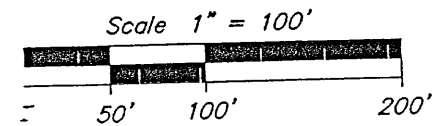
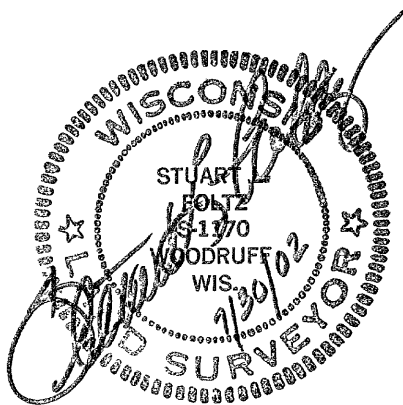


July 30, 2002

Recovered, verified, and marked monuments at the corners of Lot 3 and marked the approximate lot lines, as follows.

- ▲ = Iron monument found in place
- = Iron monument reset per record distances
- ||| = Lot lines marked approximately with fluorescent surveyor's flagging ribbon

This survey was completed by Foltz and Associates, Inc for the purpose of locating existing lot corners and flagging approximate lot lines by the order of Diane Palmiter, who has executed a written waiver for all other requirements of Wis Adm Code Chap. A-E 7. A closed traverse was not made and the minimum accuracy is 1 part in 100 and plus or minus 2°.



Bearings and distances shown are based upon a survey the County Plat of "Yawkey Heights"

Foltz and Associates, Inc

Surveyors	Engineers
8612 Highway 51 North	Minocqua Wisconsin 54548
(715) 356-9485	fax (715) 356-1841