

A1152

A1152

**SURVEY OF THE  
SOUTHEAST 1/4 SOUTHEAST 1/4  
SECTION 26, TOWN 37 NORTH, RANGE 9 EAST  
TOWN OF PINE LAKE, ONEIDA CO. WI.  
BEING 44.475 ACRES  
OWNERS: CAROL BERKEBILL, ETAL**

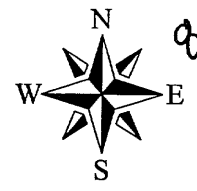
MAP # SEP 13 2002  
DATE FILED  
BY ...A1152  
DESCRIPTION FILED  
ONEIDA CO SURVEYOR'S OFFICE

EAST  
1/4 CORNER  
SEC. 26  
N 175634.43  
E 280513.88

EAST  
1/4 CORNER  
SEC. 26  
N 175305.391  
E 286103.538

NORTH  
1/4 CORNER  
SEC. 26 RESET  
FROM TIES  
N 178228.37  
E 283224.97

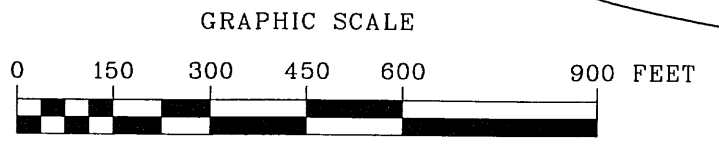
SOUTH  
1/4 CORNER  
SEC. 26  
N 172656.58  
E 283312.61



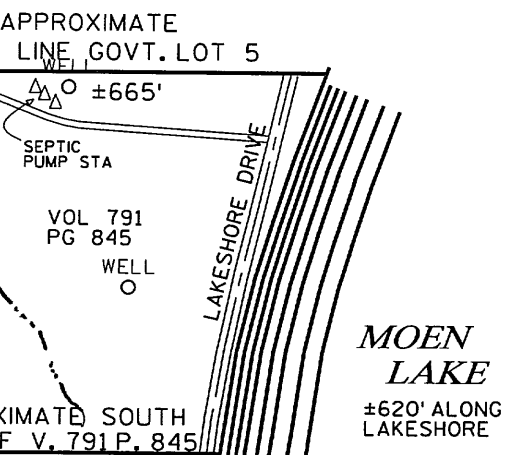
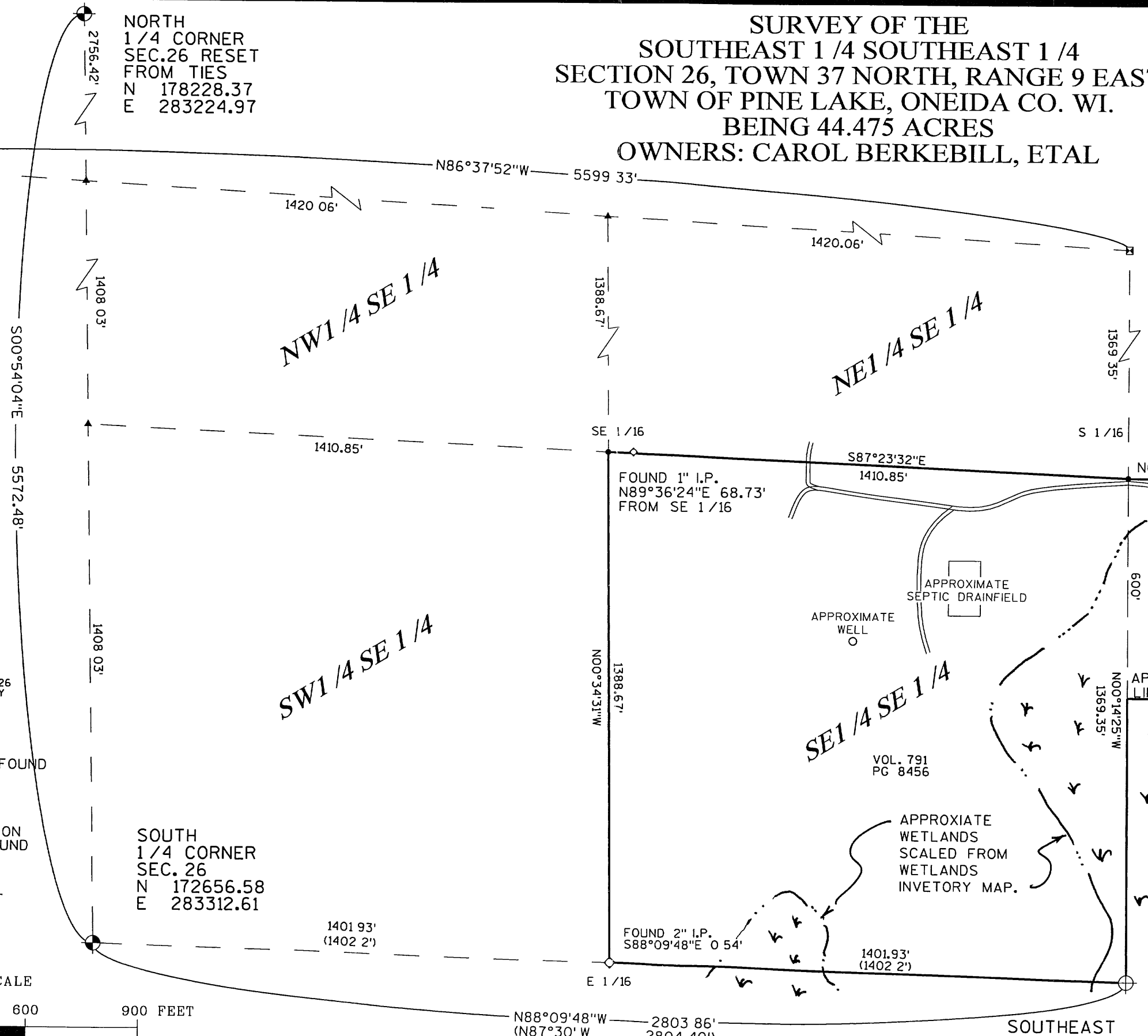
BEARINGS REFERENCED  
TO THE EAST LINE OF THE SE 1/4 SEC 26  
BEING N00°14'25" W FROM ONEIDA COUNTY  
COORDINATE SYSTEM

**LEGEND**

- ⊕ ONEIDA CO. ALUM. MON., FOUND
- ⊙ ONEIDA CO. ALUM. MON., SET
- 4" X 4" BRASS TABLET ON 1 1/4" DIA. IRON PIPE, FOUND
- ◇ 2" DIA. IRON PIPE, FOUND
- 3/4" DIA. IRON ROD, SET
- ▲ COMPUTED POSITION
- ( ) RECORDED AS



1" = 300 FEET



I, EUGENE C. UTTECH, REGISTERED LAND SURVEYOR OF THE STATE OF WISCONSIN DO HEREBY CERTIFY THIS IS TRUE AND CORRECT TO THE BEST OF MY KNOWLEDGE AND BELIEF

FIGURE 1

**MOEN LAKE  
CAMPGROUND & RESORT**  
4061 LAKESHORE DRIVE  
RHINELANDER WI.

**MSA** TRANSPORTATION MUNICIPAL DEVELOPMENT ENVIRONMENTAL  
1832 N Stevens St. Rhinelander WI 54501  
715-362-3244 1-800-844-7854 Fax: 715-362-4116  
© MSA PROFESSIONAL SERVICES

DRAWN BY JLD DATE 08-13-02 SHEET 1 OF 1  
CHECKED BY ECU SCALE 1"=300' FILE NO. 980388

A1152