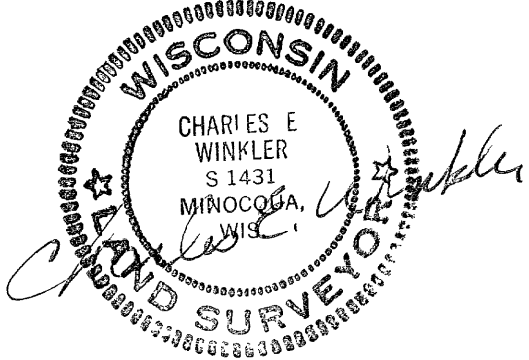
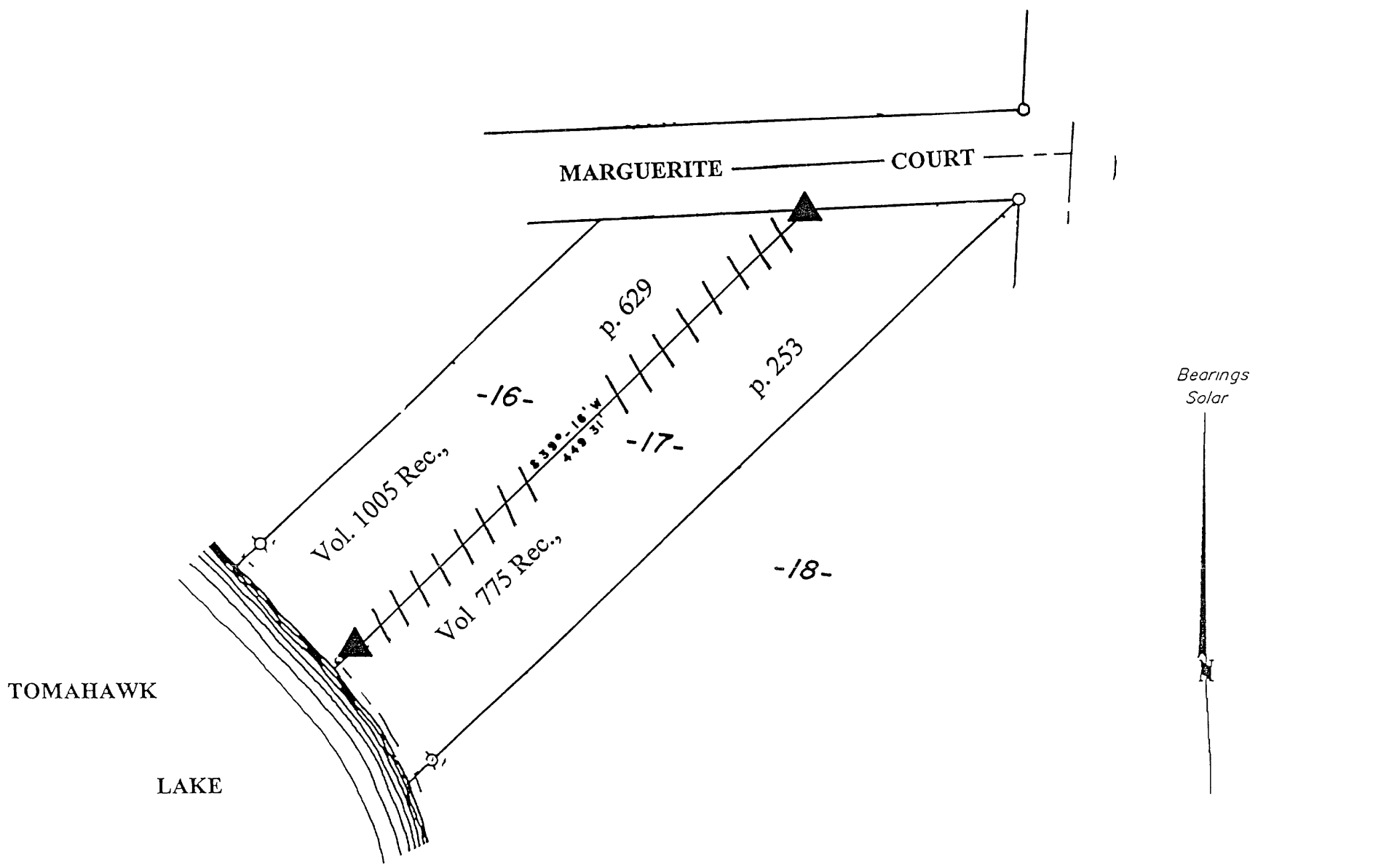


A1161

A1161

Lot 17
 of
Doolittle-Barden's Wah-Ca-Zi-Zi
 being part of
Gov't Lot 3
Section 25, T39N, R6E
 Town of Minocqua
 Oneida County, Wisconsin



Bearings and distances shown are from the recorded plat of Doolittle Barden's Wah-Ca-Zi-Zi

Scale. 1" = 50'

October 4, 2002

Recovered, verified, and marked monuments on the west line of Lot 17 and marked said lot line, as follows

- ▲ = Iron monument found in place
- ||| = Lot line marked with painted lath stakes suitable for measuring construction setbacks

This survey was completed by Foltz and Associates, Inc for the purpose of locating existing lot corners and marking the west lot line by the order of Gwen Hillinger, who has executed a written waiver for all other requirements of Wis Adm Code Chap. A-E 7. A closed traverse was not made and the minimum accuracy is 1 part in 100 and plus or minus 2°

MAP #	A1161
DATE FILED	OCT 18 2002
BY	<i>JF</i>
DESCRIPTION	L.L.D.
ONEIDA CO SURVEYOR'S OFFICE	

Foltz and Associates, Inc

Surveyors	Engineers
8612 Highway 51 North	Minocqua, Wisconsin 54548
(715) 356-9485	fax (715) 356-1841

A1161

A1161