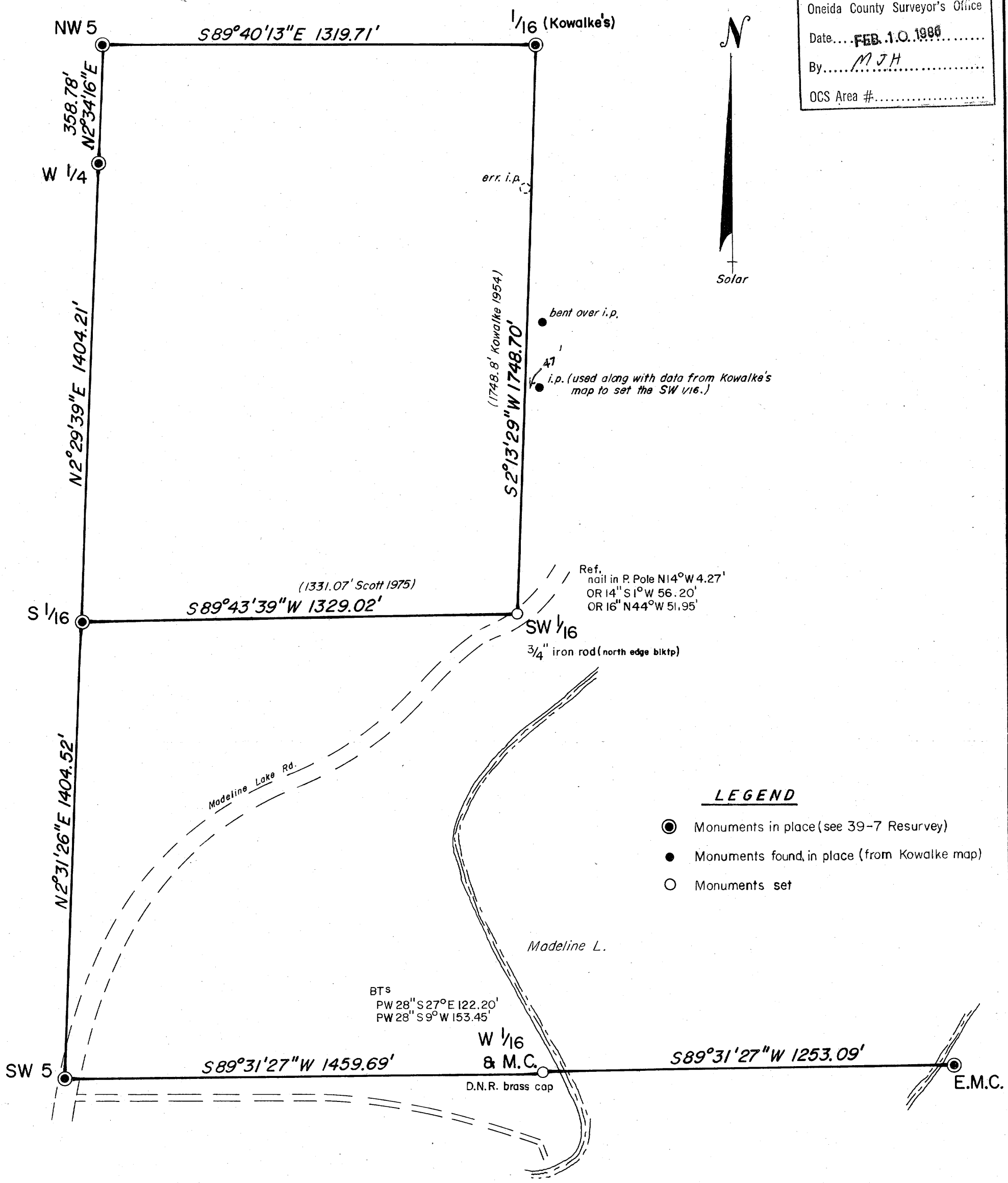


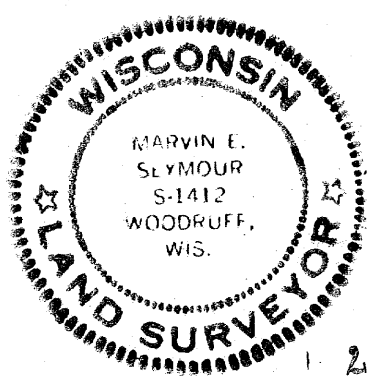
A117

RECEIVED & FILED #.....
 Oneida County Surveyor's Office
 Date... FEB. 10. 1986
 By... M J H
 OCS Area #.....



LEGEND

- Monuments in place (see 39-7 Resurvey)
- Monuments found in place (from Kowalke map)
- Monuments set



**T 39 N, R 7 E, Vilas Co.
 Part of Section 5**

Survey for the Wisc. Dept. of Natural Resources, NH-AL Forest

Scale 1" = 300'
 Dr. by M. Seymour 10/7/85

I, M.E. SEYMOUR, RLS 1412 certify this is a correct representation of Part of Sec. 5, T 39 N, R 7 E, to the best of my knowledge and belief.

Marvin E. Seymour Oct. 10, 1985