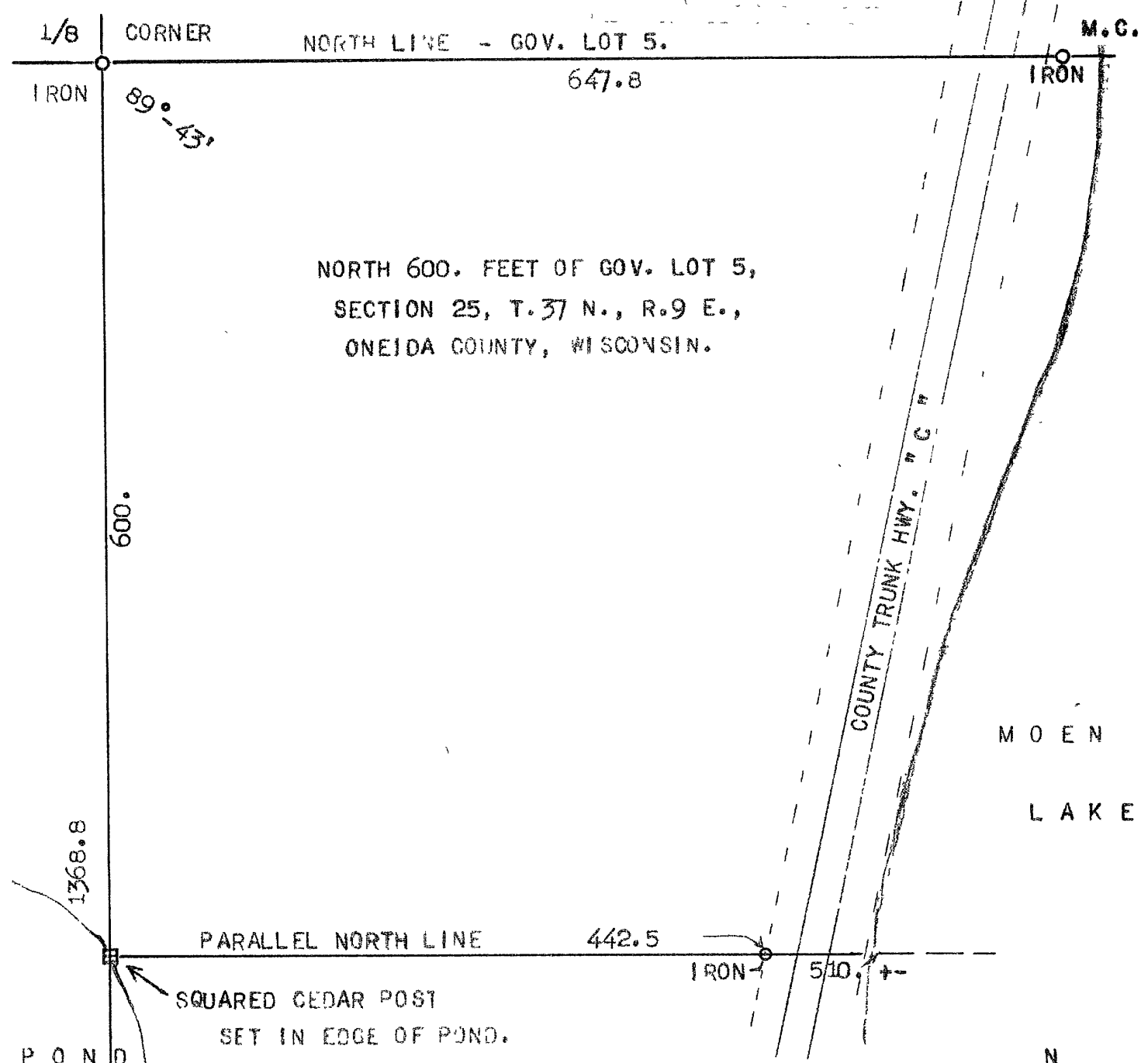


61179

61179

A 1179
DEC 27 1955



NORTH 600. FEET OF GOV. LOT 5,
SECTION 25, T.37 N., R.9 E.,
ONEIDA COUNTY, WISCONSIN.

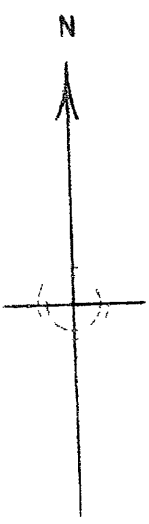
MOEN
LAKE

POND

1/8 CORNER - B.T.'S.;
NORWAY PINE 9" S. 42° E., 13.4 FT.
NORWAY PINE 8" N. 41° E., 26.9 FT.

MEANDER CORNER - B.T.'S.;
NORWAY PINE 9" N. 6° E., 13. FT.
WHITE PINE 9" S. 75° W., 3. FT.

SECTION CORNER - B.T.'S.;
NORWAY PINE 9" N. 35° E. 68.6 FT.
NORWAY PINE 8" N. 85° W. 50. FT.



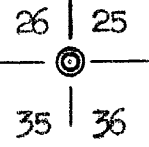
SURVEYOR'S CERTIFICATE

I, KEITH M. HALL, HEREBY CERTIFY THAT I HAVE SURVEYED THE NORTH 600. FEET OF GOV. LOT 5, SECTION 25, T.37 N., R. 9 E., ONEIDA COUNTY, WISCONSIN; THAT I HAVE USED THE SURVEY OF V.W. MAINE OF 1936 FOR THE BASIS OF MY SURVEY; AND HAVE PERPETUATED HIS TWO NORTH CORNERS OF GOV. LOT 5, WITH IRON PIPE- HIS SECTION CORNER BEING O.K.; THAT THE ABOVE SURVEY AND MAP WAS MADE BY ME AND IS TO THE BEST OF MY KNOWLEDGE AND BELIEF A CORRECT REPRESENTATION OF MY SURVEY.

SIGNED THIS 6th DAY OF JULY, 1955.

SCALE
1 INCH = 100. FT.

Keith M. Hall
KEITH M. HALL, SURVEYOR.
RHINELANDER, WISCONSIN.



A 1179